



strakers

📍 Plot 7, The Lowden Lackham Place, Rowden Park Garden  
Village, Chippenham, SN15 2NU

In branch | Online | On the move  
[strakers.co.uk](https://strakers.co.uk)

📍 Plot 7, The Lowden Lackham Place, Rowden Park Garden Village, Chippenham, SN15 2NU

🏠 Prices From £360,000

The Lowden is an attractive home on three levels, providing spacious accommodation on the ground floor with a separate kitchen/dining room and lounge to the rear overlooking the garden.

- Air Source Heat Pump and Electric Car Charger
- Kitchen/Dining Room
- Three Bedroom Semi Detached Home
- Master with En Suite Facilities
- Two Parking Spaces
- Single Garage
- Home On Three Levels
- High Specification Homes
- Easy access to train station and M4
- Popular schooling nearby

🏠 Freehold

🏠 EPC Rating B



Strakers are delighted to support Redcliffe with the launch of The York 4 bedroom Show home. at Lackham Place.  
All viewings pre booked by appointment.  
Please kindly call 01249 652717 to book.

'The Lowden' is an attractive home on three levels, providing spacious accommodation on the ground floor with a separate kitchen/dining room and lounge to the rear overlooking the garden.  
In addition to the two bedrooms on the first floor, the main bedroom features plenty of storage and its own en-suite.  
This property benefits from an Air Source Heat Pump and an Electric Car Charger.

Please contact Strakers to register your interest for the exciting 'Lackham Place' Development by Redcliffe Homes. Comprising a range of two, three, four and five bedroom homes and offering swift and easy access to the A4, the M4 Motorway and Chippenham station (with direct rail connections to Reading and London).

#### Situation

Redcliffe Homes is delighted to welcome you to Lackham Place, Rowden Park Garden Village, a new collection of individually designed 2, 3 and 4-bedroom homes.

Lackham Place is nestled among picturesque countryside and just a stones throw away from the beautiful thriving market town of connections, enjoying the very best of town and country living.

An ideal base to explore Wiltshire and the Cotswolds.

#### Accommodation

##### GROUND FLOOR

Kitchen/Dining 2600mm x 5008mm 8' 6" x 16' 5"

Living Room 4714mm x 3057mm 15' 6" x 10' 0"

##### FIRST FLOOR

Bedroom 2 2519mm x 4907mm 8' 3" x 16' 1"

Bedroom 3 2394mm x 3152mm 7' 10" x 10' 4"

##### SECOND FLOOR

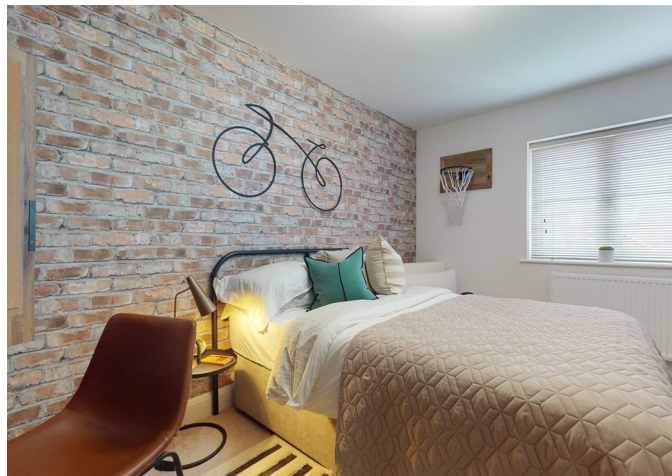
Bedroom 1 4714mm x 5593mm 15' 6" x 18' 4"

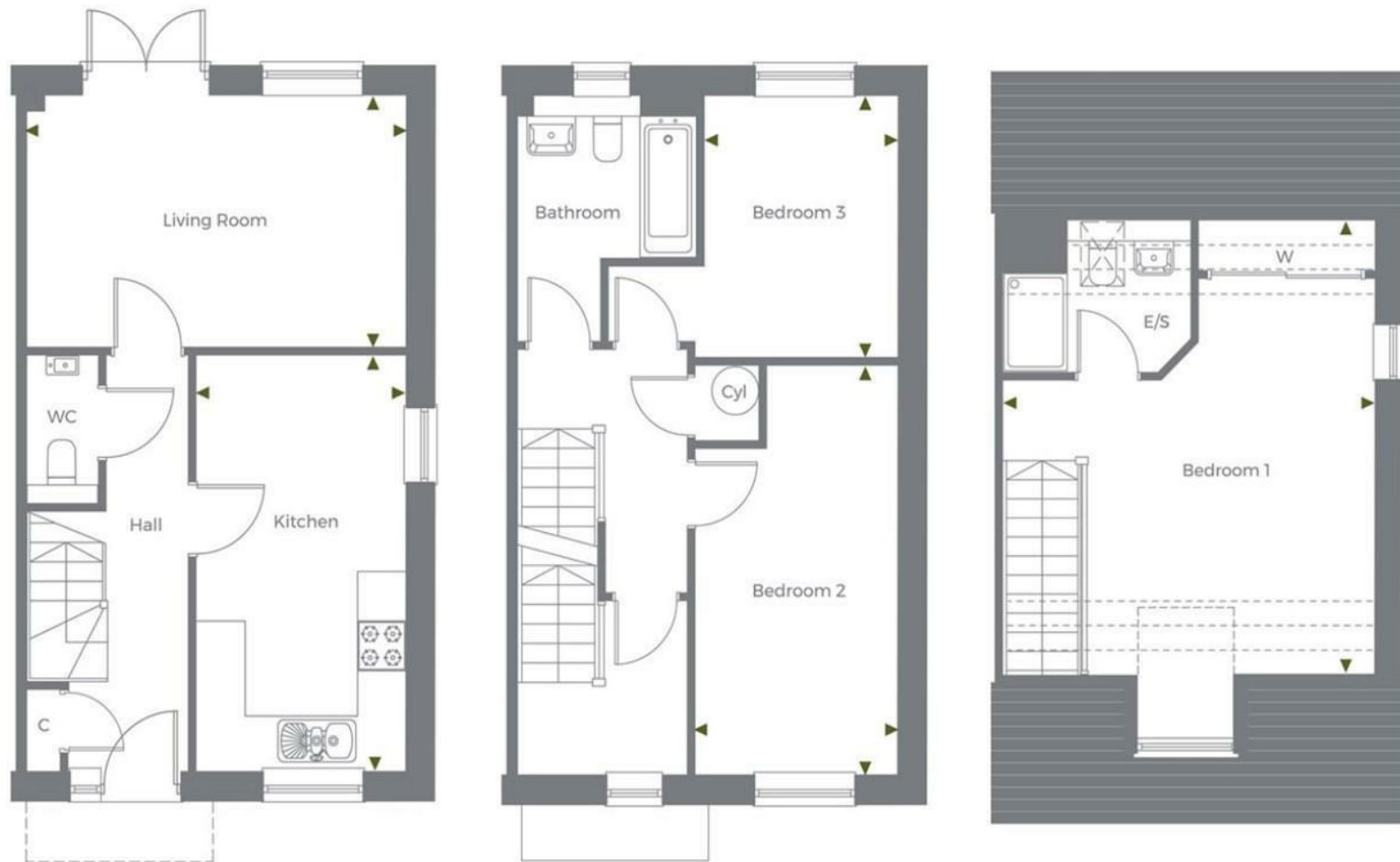
TOTAL AREA: 1104 SQ FT | 103 SQ M

The room sizes shown are taken from the dimension arrows on the floor plans, and a tolerance of +/- 50mm is allowed. External finishes on certain designs, layouts, window positions and styles may vary, please check with the Sales Advisor. These floor plans are a guide only and may be subject to change. Total area is approximate only. Computer generated image indicative only.

#### Agents Notes

NB - Computer generated images (CGI), photographs, internal and external room layouts, house layouts and site plans are produced in good faith and are intended to give potential customers a flavour of each particular house type. They do not necessarily represent specific plots or developments and actual external finishes. Plot sizes and landscaping will vary. For details of specific plots, please refer to the sales consultant.





Disclaimer These particulars, whilst believed to be accurate are set out as a general outline only for guidance and do not constitute any part of an offer or contract. Intending purchasers should not rely on them as statements of representation of fact, but must satisfy themselves by inspection or otherwise as to their accuracy. No person in this firm's employment has the authority to make or give any representation or warranty in respect of the property. All measurements and distances are approximate only. Your home is at risk if you do not keep up repayments on a mortgage or other loan secured on it.