



📍 195 London Road, Chippenham, Wiltshire, SN15 3AW

🔗 Auction Guide £160,000

An extended, three bedroom period house, offering spacious and flexible living, situated within a short walk of the town centre and train station. Offered with No Onward Chain.

- For Sale By Online Auction
- Thursday 11th July 2024
- Lot 08
- Guide Price £160,000+

🏠 Freehold

📊 EPC Rating D



LOT 08
FOR SALE BY ONLINE AUCTION
THURSDAY 11th JULY 2024
GUIDE PRICE £160,000+

Extended 3 bedroom semi-detached house in need of minor updating and within walking distance of the town centre.

Accommodation comprises on the ground floor; entrance hall, open plan living/dining area, study and kitchen. On the first floor; landing, 3 bedrooms and a bathroom. There is double glazing and gas heating. There has been many improvements made recently to include new roofs, fascias, gutters and door.

There is a small courtyard garden to the front with side access to a larger enclosed garden mainly laid to lawn.

The property has recently been tenanted and could achieve a rental income of about £900pcm which equates to £10,800pa.

Situation & Description

Extended 3 bedroom semi-detached house in need of minor updating and within walking distance of the town centre.

Chippenham is a large market town with a wide choice of schooling as well as varied shopping and leisure activities. There is a mainline railway station and access to J17 of the M4 motorway is only a short drive.

Accommodation comprises on the ground floor; entrance hall, open plan living/dining area, study and kitchen. On the first floor; landing, 3 bedrooms and a bathroom. There is double glazing and gas heating. There has been many improvements made recently to include new roofs, fascias, gutters and door.

There is a small courtyard garden to the front with side access to a larger enclosed garden mainly laid to lawn.

The property has recently been tenanted and could achieve a rental income of about £900pcm which equates to £10,800pa.

What3Words/// hooked.admire.effort

Viewings

To arrange a viewing, contact: Chippenham office on 01249 652717

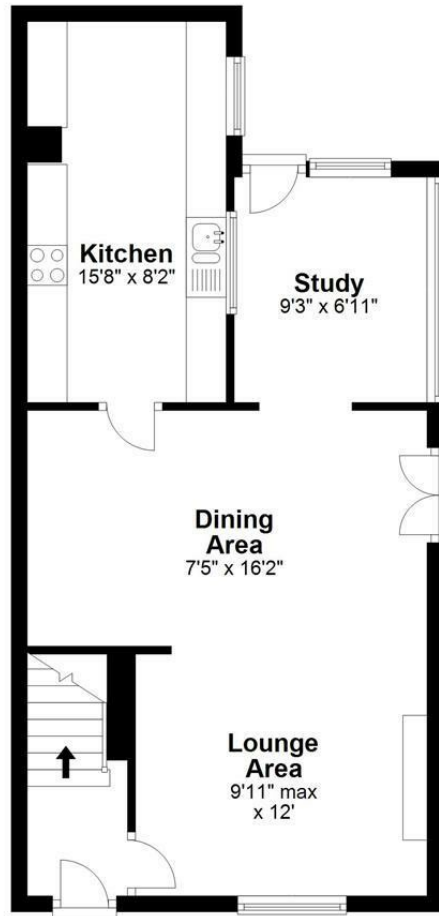
There will be numerous pre-arranged open house viewing slots lasting for 30 minutes and you can book in by contacting the Auctioneers.

If you have any concerns with viewings, please contact the relevant Strakers office and we would be happy to discuss them with you and hopefully put you at ease.



Ground Floor

Approx. 517.0 sq. feet



First Floor

Approx. 411.1 sq. feet



Total area: approx. 928.1 sq. feet

Illustration for identification purposes only, measurements are approximate, not to scale.
Plan produced using PlanUp.

Disclaimer These particulars, whilst believed to be accurate are set out as a general outline only for guidance and do not constitute any part of an offer or contract. Intending purchasers should not rely on them as statements of representation of fact, but must satisfy themselves by inspection or otherwise as to their accuracy. No person in this firm's employment has the authority to make or give any representation or warranty in respect of the property. All measurements and distances are approximate only. Your home is at risk if you do not keep up repayments on a mortgage or other loan secured on it.