



📍 Plot 2 Rosehill Close, Bradenstoke, Chippenham, Wiltshire, SN15 4LB

🏠 Asking Price £575,000

A stunning, newly built, four bedroom, two reception room, two bathroom, semi detached house with good sized, level garden, garage and ample driveway parking which forms part of an exclusive development of only four houses by Colburn Homes in this popular village.

- ONLY TWO HOMES REMAINING!
- Award Winning Colburn Homes Development Of Only 4 Houses
- High Specification, New Build, Semi Detached House with Four Good Sized Bedrooms
- Fabulous, Open Plan Kitchen/Dining/Family Room With Wood Burning Stove
- Fully Fitted Kitchen With Integrated Appliances
- Bathroom & En Suite Shower Room (Underfloor Heating)
- Floor Coverings Included
- Underfloor Heating (Ground Floor) Via An Air Source Heat Pump
- Solar Panels & Electric Car Charging Point
- Garage & Ample Driveway Parking

🏠 Freehold

🏠 EPC Rating A



***LAST PLOT REMAINING* ENERGY EFFICIENT, NEW BUILD HOUSE (EPC RATING A)**
A stunning, semi detached house with good sized, level garden, garage and ample driveway parking which forms part of an exclusive development of only four spacious houses by Colburn Homes, neighbouring countryside in this popular village.

The house has been built to a high specification and features aluminium, powder coated, grey, triple glazed windows, fully fitted kitchen with resin worktops and integrated appliances, underfloor heating on the ground floor via an air source heat pump and central heating on the first floor, This energy efficient house benefits from 10 solar panels and electric car charging points in the garage.

The spacious accommodation is arranged over two floors and comprises; entrance hall with cloakroom off, sitting room, fabulous open plan kitchen/dining room with an excellent range of fitted units, resin worktops and upstands, integrated appliances and wood burning stove, open plan to a family room with French doors opening onto the rear garden, utility room, bedroom 1 with built in wardrobes and an en suite shower room (underfloor heating), three further good sized bedrooms and a superb bathroom with four piece white suite (underfloor heating).

Externally there is a good sized, level rear garden which is well enclosed and enjoys a good deal of privacy. Directly to the rear of the property there is a paved patio seating area which leads onto a large section of lawn. Opposite the four houses there is a lovely open, green space (just under an acre in size), the ownership of which will be shared equally by the owners of the four houses.

Situation

Bradenstoke is a popular village which is set overlooking the Dauntsey Vale boasting far reaching views from many areas. The village has a public house, church, village hall and is within 1 mile of the thriving village of Lyneham with its numerous amenities and primary school with Royal Wootton Bassett close by. The property is well located for access to the M4 motorway junctions 16 and 17, and also for the major commercial centres of Reading, Cardiff, Swindon, Bath and Bristol. Mainline railway services are available from Chippenham and Swindon and connect with London Paddington in approximately 1 hour 15 minutes and 50 minutes respectively.

Property Information

Tenure: Freehold

Council Tax Band: TBC

EPC Rating: A

Services; Mains Electricity, water and drainage.

Underfloor (Ground Floor) & Central Heating (First Floor) via an air source heat pump

Solar Panels

Electric vehicle charging point (in the garage)



Rosehill Close, Bradenstoke, Chippenham, SN15

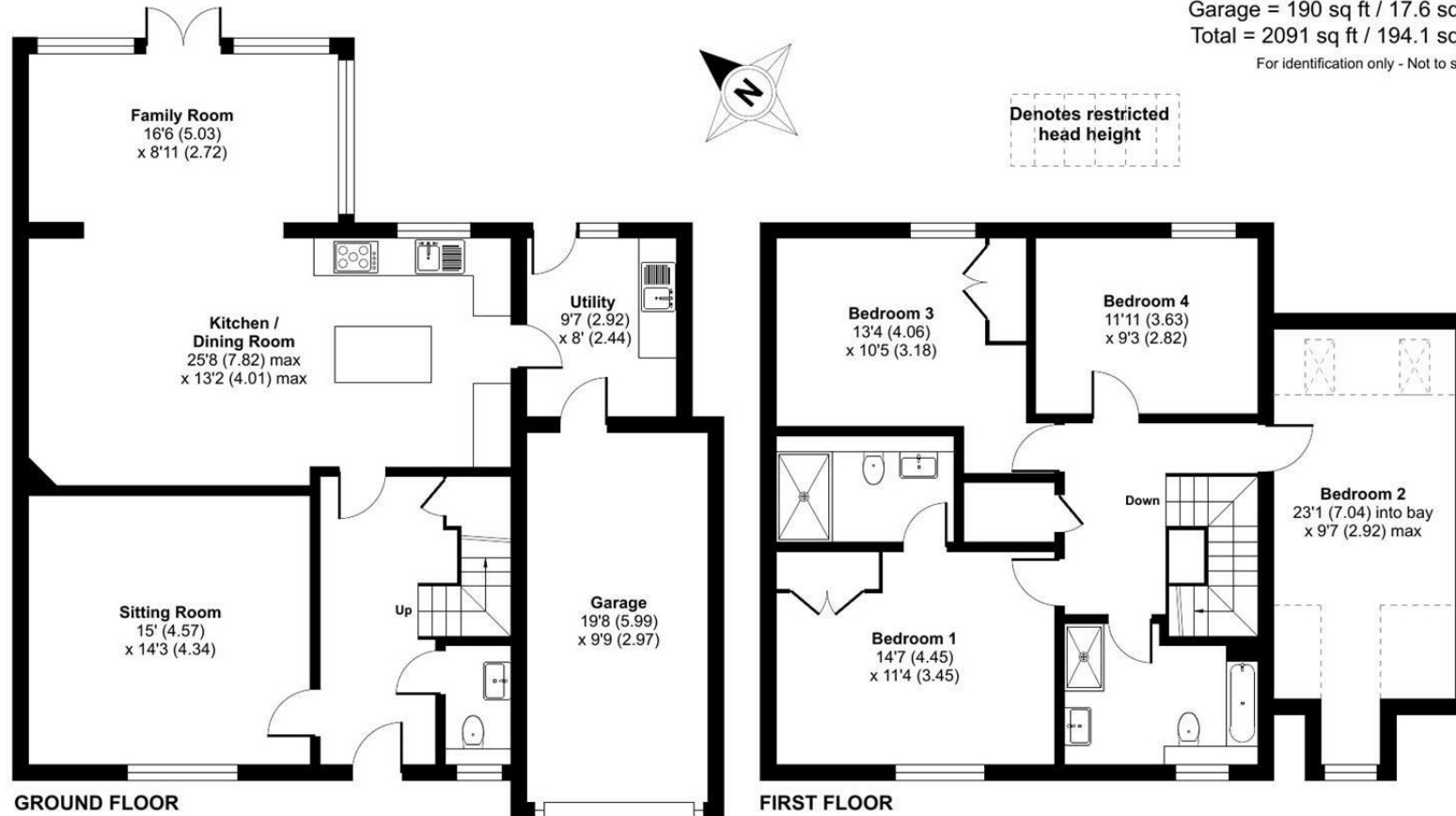
Approximate Area = 1832 sq ft / 170.1 sq m

Limited Use Area(s) = 69 sq ft / 6.4 sq m

Garage = 190 sq ft / 17.6 sq m

Total = 2091 sq ft / 194.1 sq m

For identification only - Not to scale



Floor plan produced in accordance with RICS Property Measurement Standards incorporating International Property Measurement Standards (IPMS2 Residential). © nichecom 2024. Produced for Strakers. REF: 1126356

Disclaimer These particulars, whilst believed to be accurate are set out as a general outline only for guidance and do not constitute any part of an offer or contract. Intending purchasers should not rely on them as statements of representation of fact, but must satisfy themselves by inspection or otherwise as to their accuracy. No person in this firm's employment has the authority to make or give any representation or warranty in respect of the property. All measurements and distances are approximate only. Your home is at risk if you do not keep up repayments on a mortgage or other loan secured on it.