





📍 Flat 4 14 Market Place, Chippenham, Wiltshire, SN15 3HJ

🏠 £120,000

A well presented, stylish one bedroom second floor apartment, making up part of a recently renovated Grade II listed period building, situated in the very heart of Chippenham. Offered with No Onward Chain.

- Stylish Top Floor Apartment
- Grade II Listed, Period Conversion
- One Bedroom
- Modern Shower Room / Kitchen
- On-Street Parking
- Town Centre Location
- Ideal First Time Purchase / Investment Opportunity
- Approximate Rental Income of £650pcm.
- 999 Year Lease
- No Onward Chain

🏠 Leasehold

🏠 EPC Rating F





A well presented one bedroom top floor apartment making up part of a recently renovated Grade II listed period building situated in the very heart of Chippenham. Offered with No Onward Chain.

Accommodation comprises of secure communal entrance with stairs leading to the apartment, entrance hall, generous dual-aspect kitchen / sitting room with views down Chippenham High Street, one large double bedroom and the modern family shower room.

This fantastic property would make an ideal first time purchase or investment opportunity.  
Approximate rental income of £650pcm

#### **Situation**

Market Place is one of the oldest parts of the historic town of Chippenham. The town centre and the mainline railway station are also within a short walking distance. There is a good choice of private schooling and Chippenham also offers excellent secondary schools and primary schools, together with further education at Wiltshire College. The M4 motorway, the A4 and the A420 offer excellent motor commuting to the major centres of Bath, Bristol, Swindon & London.

#### **Property Information**

Council Tax Band: A

EPC Rating: F

Leasehold - 991 Years Remaining

Service Charge/Ground Rent - TBC

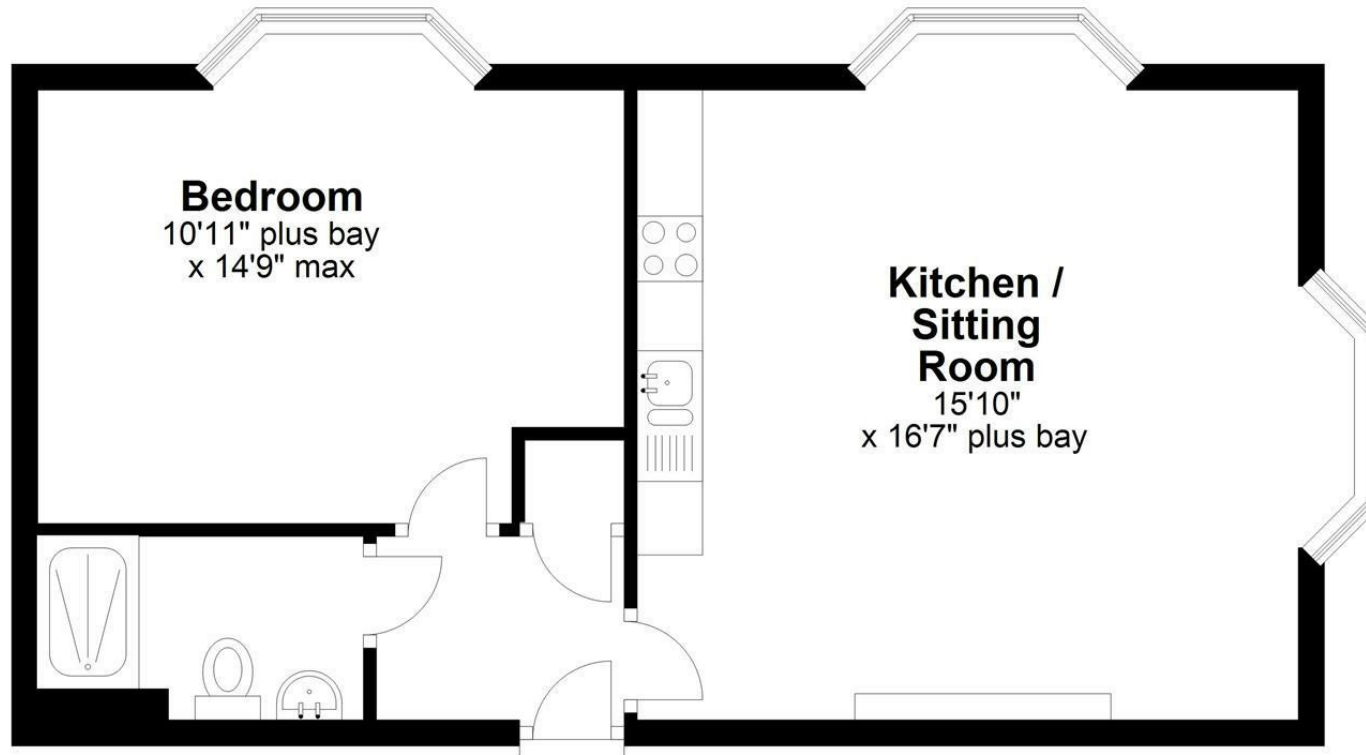
Grade II Listed

Mains water, electricity and drainage.



## Second Floor

Approx. 508.9 sq. feet



Total area: approx. 508.9 sq. feet

Illustration for identification purposes only, measurements are approximate, not to scale.  
Plan produced using PlanUp.

Disclaimer These particulars, whilst believed to be accurate are set out as a general outline only for guidance and do not constitute any part of an offer or contract. Intending purchasers should not rely on them as statements of representation of fact, but must satisfy themselves by inspection or otherwise as to their accuracy. No person in this firm's employment has the authority to make or give any representation or warranty in respect of the property. All measurements and distances are approximate only. Your home is at risk if you do not keep up repayments on a mortgage or other loan secured on it.