



📍 10 Dover Street, Chippenham, Wiltshire, SN14 0EE

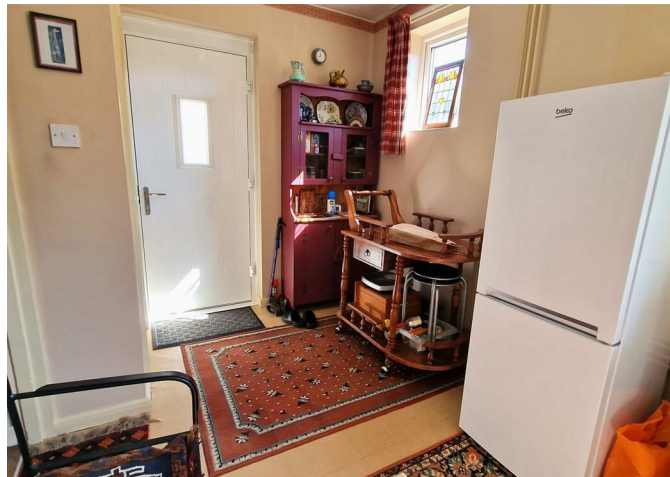
🏠 £210,000

A 1950's built, two double bedroom, end of terrace house with nicely-proportioned, low maintenance rear garden, which is conveniently situated within walking distance of the train station and town centre amenities. The property would benefit from modernising in areas, and is Offered with NO ONWARD CHAIN.

- 1950's End of Terrace House
- Two Double Bedrooms
- Sitting Room with Wood-Burner
- Kitchen / Breakfast Room
- Recently Appointed External Doors & Windows
- Well-Proportioned Garden
- Summerhouse & Shed
- Would Benefit from Modernising in Areas
- No Onward Chain

🏡 Freehold

🏠 EPC Rating C



A 1950's built, end of terrace house with well-proportioned rear garden, which is conveniently situated within walking distance of the train station and town centre amenities. The property would benefit from modernising in areas, and is Offered with NO ONWARD CHAIN.

The property offers well proportioned accommodation over two floors comprising; hall, sitting room with wood-burner, kitchen / breakfast room, two double bedrooms and family bathroom.

Externally there is a hard standing garden to the front, and nicely proportioned rear garden with shed and summer house.

Further benefits include recently appointed external doors, windows and gas boiler.

### Situation

The property is just a short distance away from the town and all amenities which include a public library and the pleasant Monkton Park with a nine hole golf course and riverside walks and cycleways. There is convenient pedestrian access to the mainline railway station (London Paddington - approx. 75 minutes). The M4 motorway, the A4 and the A420 offer excellent motor commuting to the major centres of Bath, Bristol, Swindon & London. There is a good choice of private schooling and Chippenham also offers excellent secondary schools and primary schools, together with further education at Wiltshire College.

### Property Information

Freehold

Mains Services

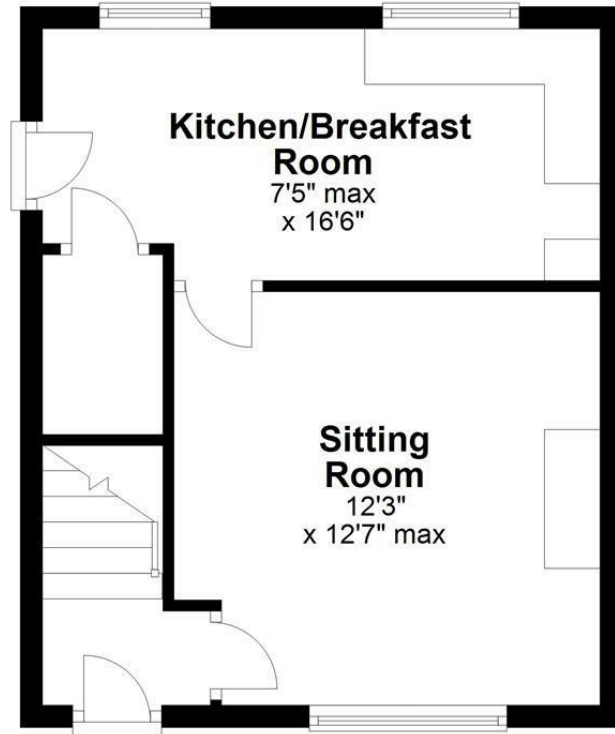
Gas Central Heating

Council Tax Rating: B

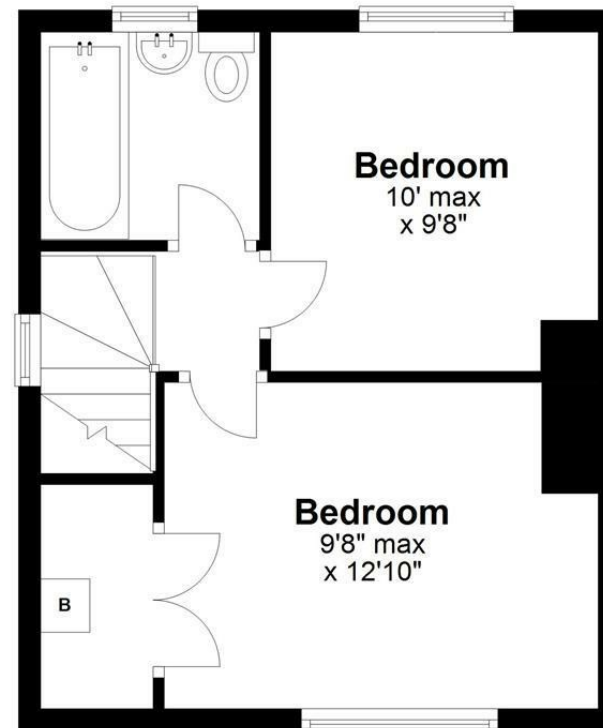
EPC Rating; TBC



## Ground Floor



## First Floor



Total area: approx. 658.4 sq. feet

Illustration for identification purposes only, measurements are approximate, not to scale.  
Plan produced using PlanUp.

Disclaimer These particulars, whilst believed to be accurate are set out as a general outline only for guidance and do not constitute any part of an offer or contract. Intending purchasers should not rely on them as statements of representation of fact, but must satisfy themselves by inspection or otherwise as to their accuracy. No person in this firm's employment has the authority to make or give any representation or warranty in respect of the property. All measurements and distances are approximate only. Your home is at risk if you do not keep up repayments on a mortgage or other loan secured on it.