



St Andrew's Lodge, The Causeway  
Chippenham, SN15 3HN



16 The Causeway, Chippenham,  
Wiltshire, SN15 3HN

St Andrew's Lodge is a collection of 46 one and two bedroom retirement apartments, well located for the town centre shops and amenities, and the wealth of beautifully maintained parks in Chippenham.

- 24 Hour Call Centre Support System
- Guest Suite for Friends and Family
- Lodge Manager
- Secure Camera Entry System
- Walk Out Balconies on Selected Apartments
- Energy Efficient and Economical Heating
- Landscaped Gardens with Patio and Seating Areas
- Owners' Lounge with Coffee Bar
- Walk-in Wardrobes

Prices From £351,950



A beautiful two bedroom apartment set in the heart of Chippenham within a short distance of the town centre and its local amenities. Access via a communal entrance hall with a lift to all floors.

The property enjoys a hallway with camera entry system, spacious living room, a contemporary fitted kitchen with a range of integrated appliances, two double bedrooms, main with a walk-in wardrobe, and a separate cloakroom. The apartment is connected to a 24 hour support system with an on site Lodge Manager during working hours.

A beautifully designed Owners' Lounge with a coffee bar offers the perfect venue for entertaining or just a change of scene. There is also a fully furnished Guest Suite which provides an ideal space for your family and friends to stay.

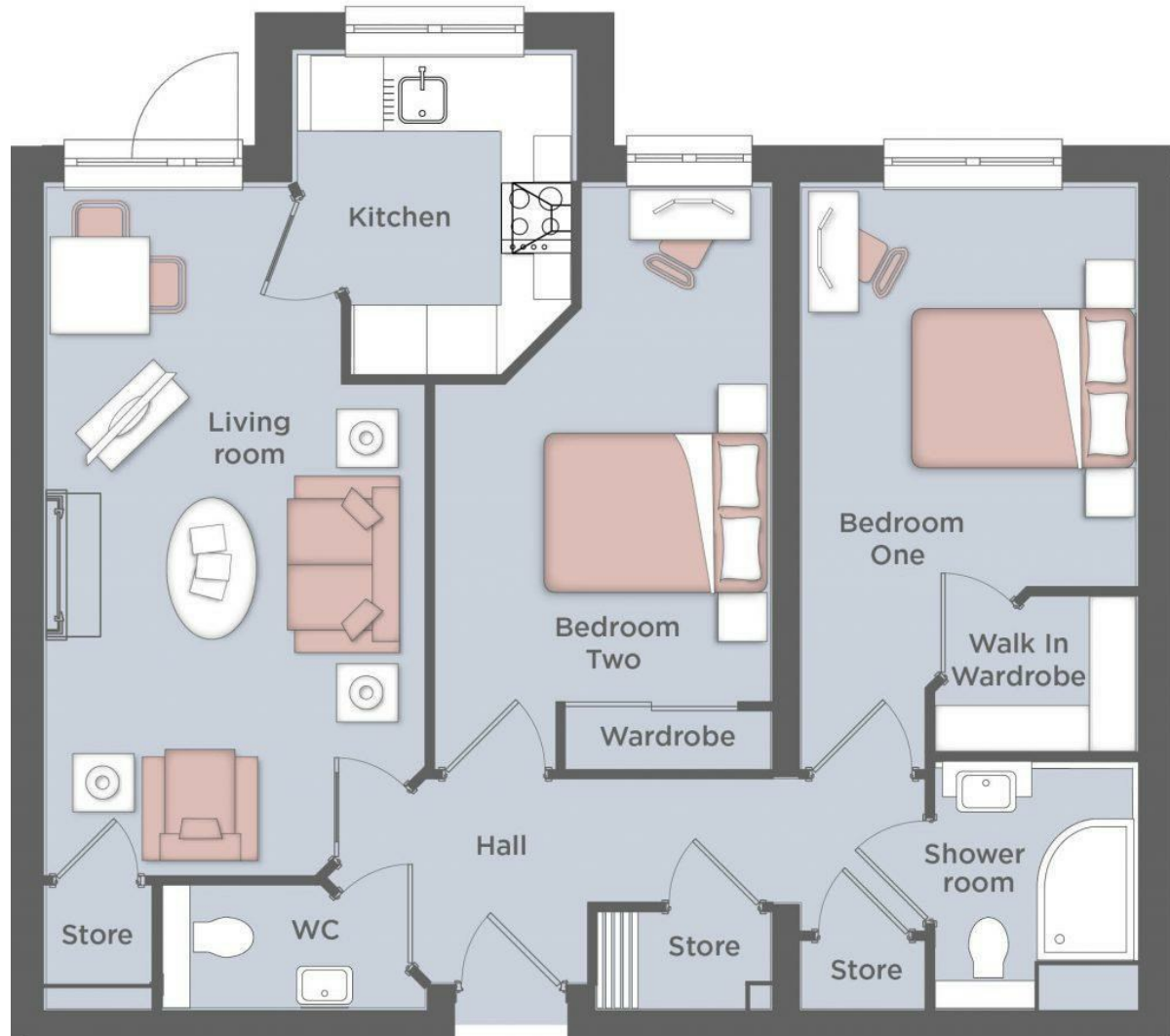
Externally there are beautifully landscaped gardens maintained for you, giving you the perfect place to relax and enjoy an afternoon cup of tea, without having to worry about the maintenance and upkeep.

Property Information  
Tenure - Leasehold

Lease Information - TBC

Council Tax Band - TBC





16 The Causeway, Chippenham, Wiltshire, SN15 3HN

Tel: 01249 652717

Email: [chippenham@strakers.co.uk](mailto:chippenham@strakers.co.uk)

<https://www.strakers.co.uk>

■ Chippenham

■ Corsham

■ Devizes

■ Malmesbury

■ Auctions

■ Lettings

■ New Homes

■ Professional Dept