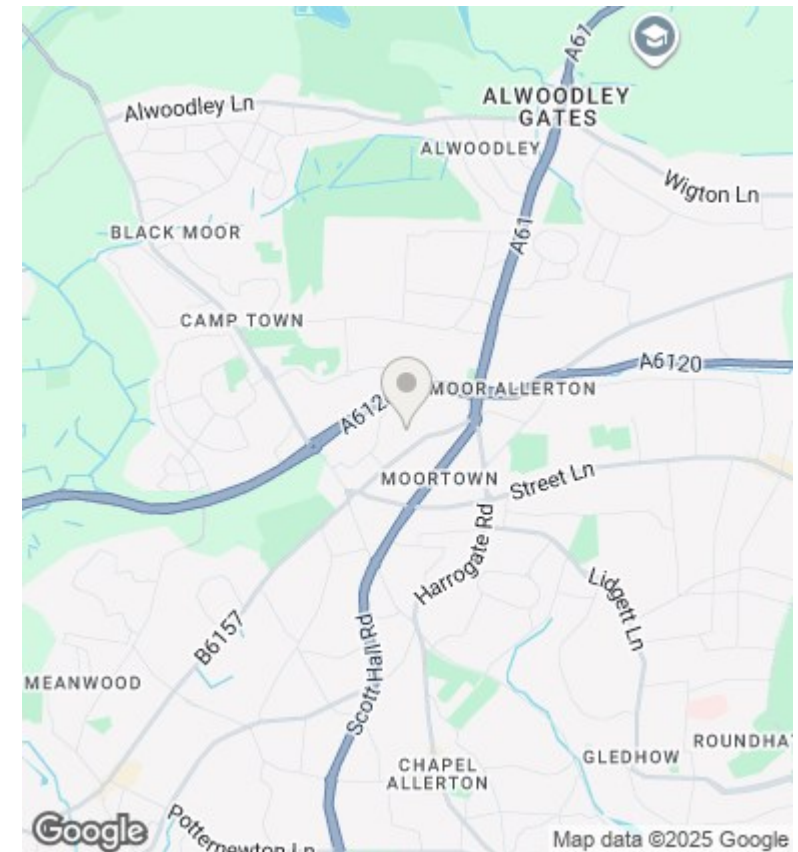
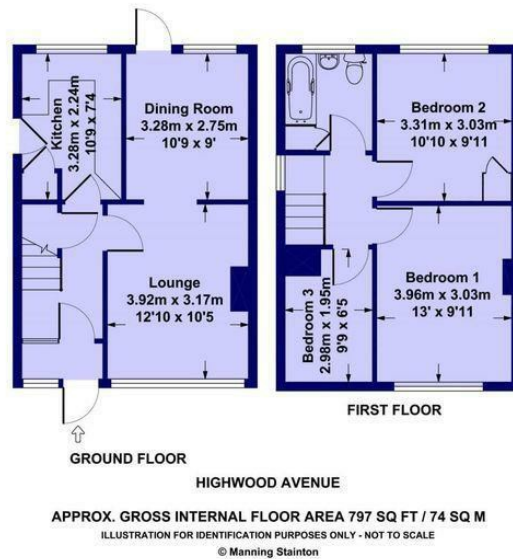




21 Highwood Avenue, Leeds, LS17 6EW

Per Calendar Month £1,300 Per Calendar Month

- | | | |
|---------------------------------|----------------------------|--|
| : Popular & Convenient Location | : Attractive Accommodation | : Open Plan Lounge Dining Room |
| : Modern Kitchen & Bathroom | : Gardens | : 3 Bedrooms |
| : No Pets No Smokers | : Bond 1500 | : Close To Local Amenities Including Schools & Shops |
| : Viewing Strongly Recommended | | |



Directions

SAT NAV LS17 6EW

Viewings

Viewings by arrangement only. Call 01422 349222 to make an appointment.

Council Tax Band

C

EPC Rating:

E

