

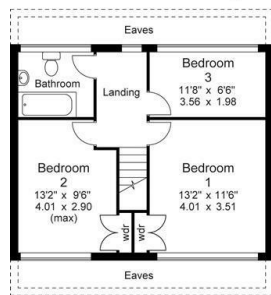


17 Springwood Drive, Halifax, West Yorkshire, HX3 0TQ

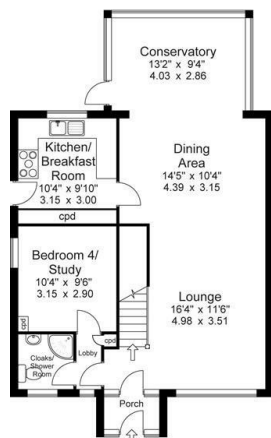
£1,800

- : Superb Family Home
- : 4 Bedrooms
- : Easy Access to the Trans Pennine Road & Rail Network
- : Viewing Essential
- : Breathtaking Panoramic Views
- : 2 Bathrooms
- : South Facing Garden
- : Attractive Modern Accommodation
- : Close to Outstanding schools
- : No Smokers

Approx Gross Floor Area = 1291 Sq. Feet  
= 119.93 Sq. Metres

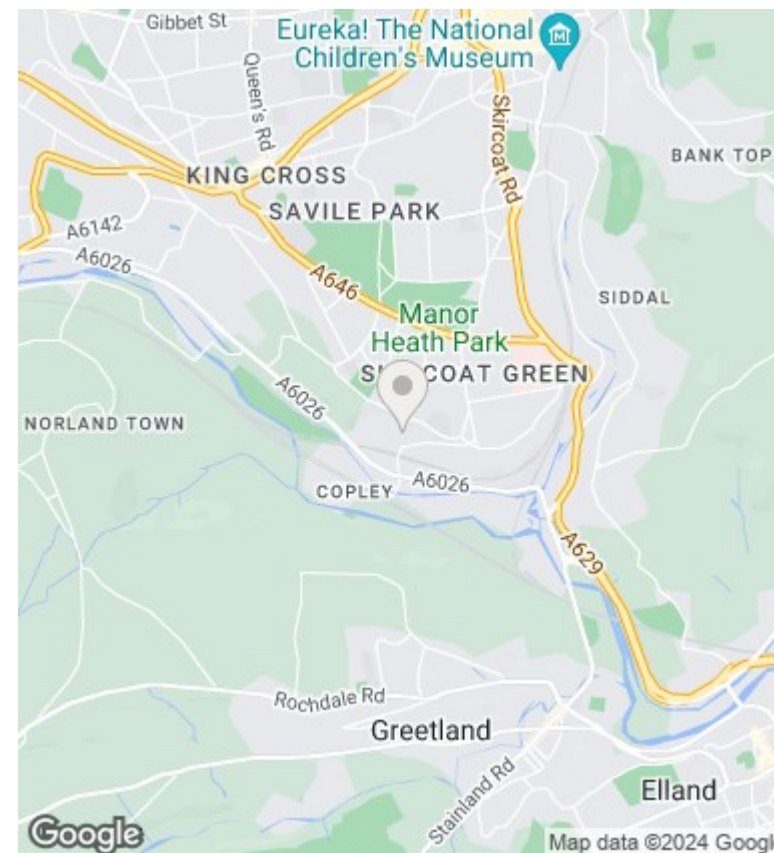


First Floor



Ground Floor

For illustrative purposes only. Not to scale.



## Directions

## Viewings

Viewings by arrangement only. Call 01422 349222 to make an appointment.

## Council Tax Band

D

## EPC Rating:

Energy Efficiency Rating		Current	Potential
<i>Very energy efficient - lower running costs</i>			
(92 plus)	<b>A</b>		
(81-91)	<b>B</b>		
(69-80)	<b>C</b>		
(55-68)	<b>D</b>		
(39-54)	<b>E</b>		
(21-38)	<b>F</b>		
(1-20)	<b>G</b>		
<i>Not energy efficient - higher running costs</i>			
<b>England &amp; Wales</b>		EU Directive 2002/91/EC	