

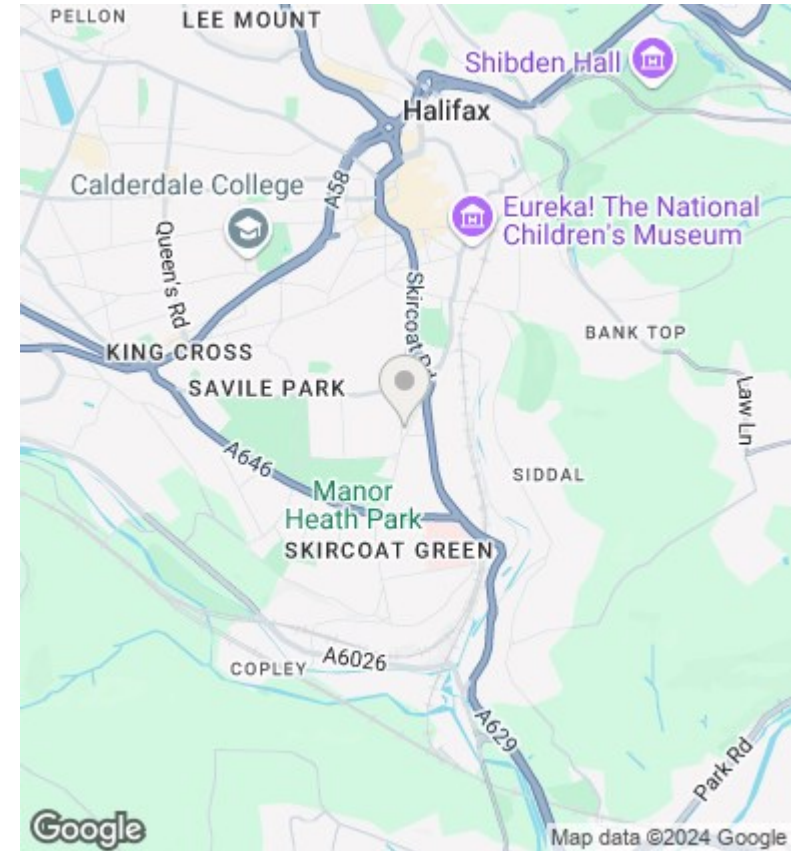
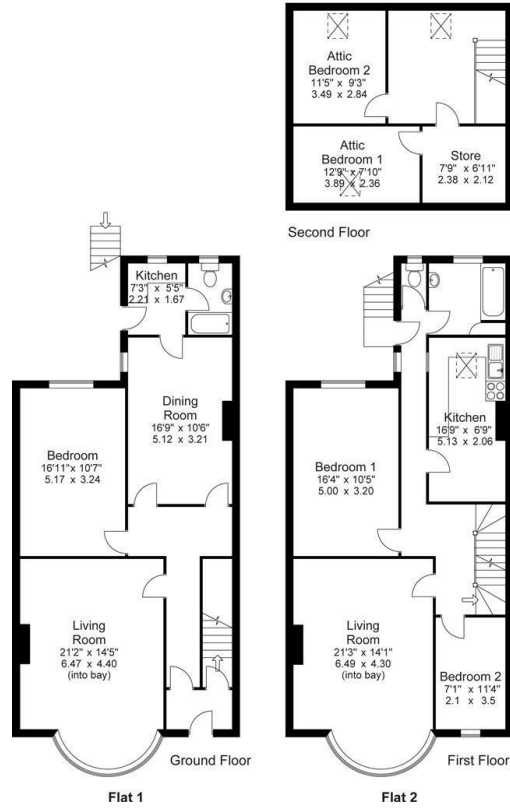


5 Heathfield Place, Halifax, HX3 0BX

Offers Over £275,000

- : Highly Desirable Location
- : Potential for a 6 Bedroomed Family Home
- : Easy Access To Halifax Town Centre
- : Realistically Priced
- : Period Residence
- : Close to Outstanding Schools
- : Easy Access to Trans Pennine Road & Rail Network
- : Presently 2 Apartments
- : Gardens to Front & Rear, Garage & Off Road Parking
- : Viewing Essential & No Chain

Approx Gross Floor Area = 2201 Sq. Feet
= 204.5 Sq. Metres



Directions

SAT NAV HX3 OBX

Viewings

Viewings by arrangement only. Call 01422 349222 to make an appointment.

Council Tax Band

EPC Rating:

Energy Efficiency Rating		Current	Potential
Very energy efficient - lower running costs			
(92 plus) A			
(81-91) B			
(69-80) C			
(55-68) D			
(39-54) E			
(21-38) F			
(1-20) G			
Not energy efficient - higher running costs			
England & Wales		EU Directive 2002/91/EC	