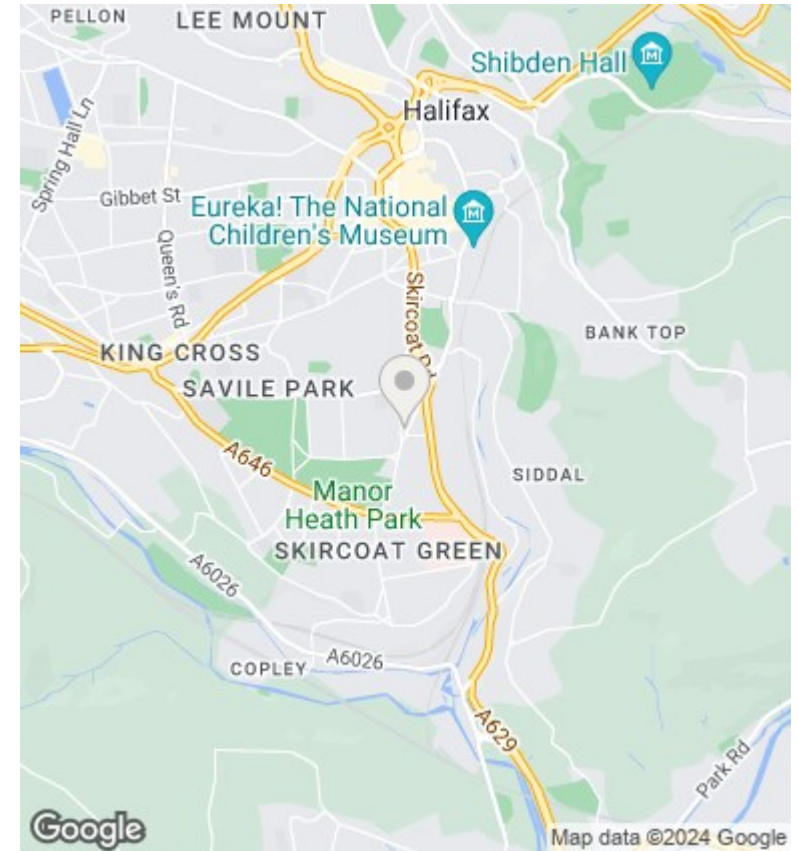
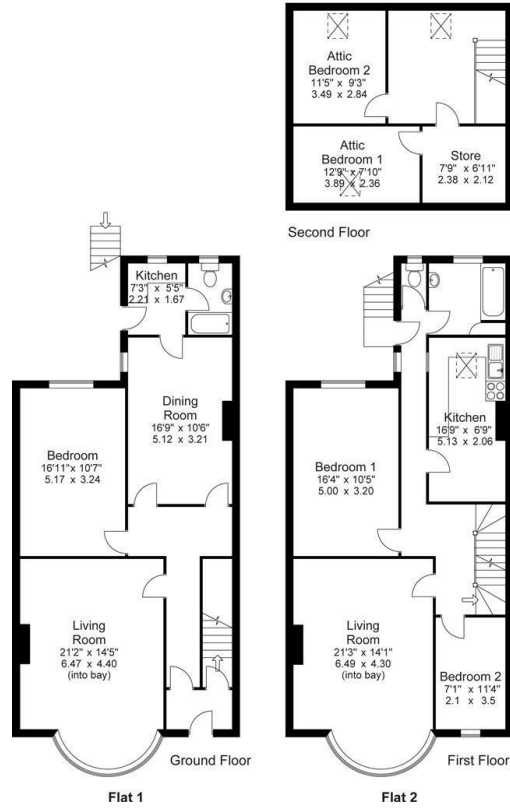


5 Heathfield Place, Halifax, HX3 0BX

Offers Over £275,000

- : Highly Desirable Location
- : Potential for a 6 Bedroomed Family Home
- : Easy Access To Halifax Town Centre
- : Realistically Priced
- : Period Residence
- : Close to Outstanding Schools
- : Easy Access to Trans Pennine Road & Rail Network
- : Presently 2 Apartments
- : Gardens to Front & Rear, Garage & Off Road Parking
- : Viewing Essential & No Chain

Approx Gross Floor Area = 2201 Sq. Feet
= 204.5 Sq. Metres



Directions

SAT NAV HX3 OBX

Viewings

Viewings by arrangement only. Call 01422 349222 to make an appointment.

Council Tax Band

EPC Rating:

Energy Efficiency Rating		
	Current	Potential
<i>Very energy efficient - lower running costs</i>		
(92 plus) A		
(81-91) B		
(69-80) C		
(55-68) D		
(39-54) E		
(21-38) F		
(1-20) G		
<i>Not energy efficient - higher running costs</i>		
England & Wales	EU Directive 2002/91/EC	