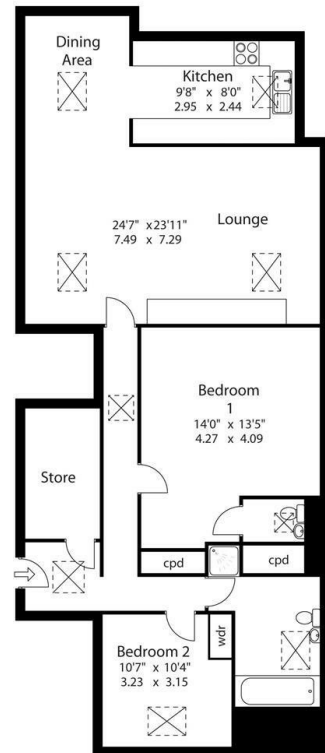


14 Bermerside House Greenroyd Close, Halifax, West Yorkshire, HX3 0JY

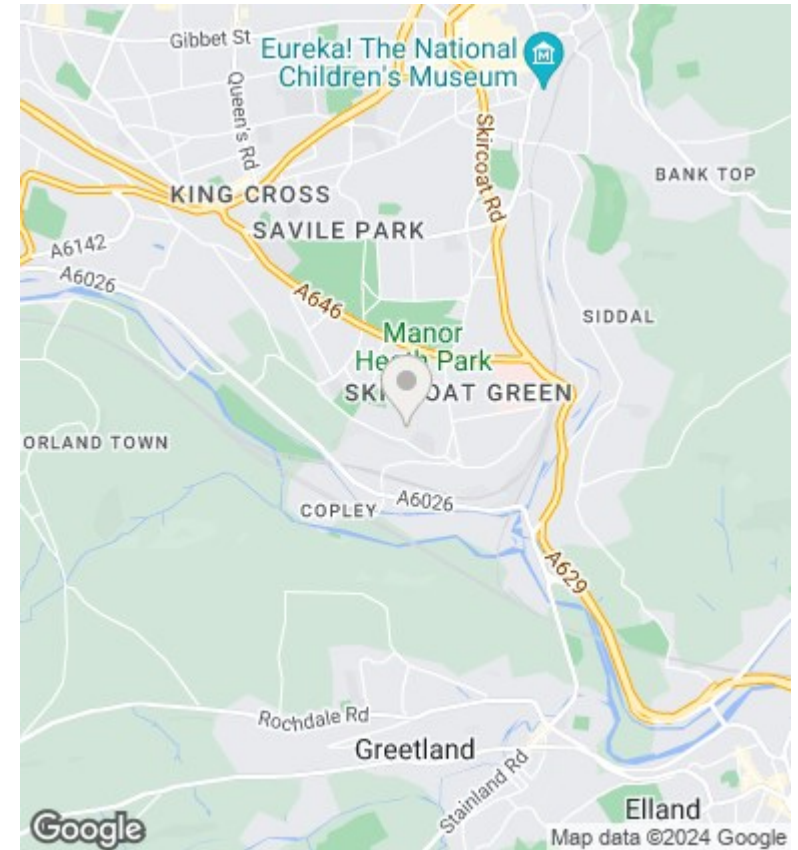
Offers In Excess Of £165,000

- : Highly Desirable Residential Location
- : Spacious Living Area
- : South Facing Garden
- : Viewing Essential
- : Attractive Period Features
- : 2 Double Bedrooms
- : Quality Fixtures & Fittings
- : Superb Penthouse Apartment
- : Designated Parking
- : Attractive Living Accommodation

Approx Gross Floor Area = 1188 Sq. Feet
 = 110.13 Sq. Metres



For illustrative purposes only. Not to scale.



Directions

Viewings

Viewings by arrangement only. Call 01422 349222 to make an appointment.

Council Tax Band

D

EPC Rating:

Energy Efficiency Rating		
	Current	Potential
<i>Very energy efficient - lower running costs</i>		
(92 plus) A		
(81-91) B		
(69-80) C		
(55-68) D		
(39-54) E		
(21-38) F		
(1-20) G		
<i>Not energy efficient - higher running costs</i>		
England & Wales	EU Directive 2002/91/EC	