

Fern Cottage Stafford Avenue, Halifax, West Yorkshire, HX3 OBH

Offers In Excess Of £825,000

- : Highly Desirable Residential Location
- : Dramatic Glass Entrance Atrium
- : Easy Access to Outstanding Schools
- : 5 Bedrooms, 3 Reception Rooms 5 Bathrooms
- : Realistically Priced
- : 19th Century Residence with a tasteful blend of Modern Contemporary Design
- : Private Enclose Garden with Electric Gates
- : Easy Access to Halifax Town Centre & The M62
- : Stunning Family Home
- : Viewing Essential

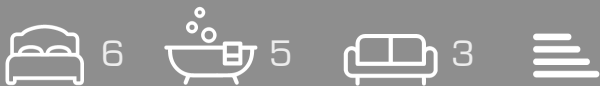
Fern Cottage Stafford Avenue, Halifax HX3 0BH

Nestled in the charming area of Skircoat Green, Halifax, Fern Cottage is a splendid example of a Regency character property, built in approx 1895. This delightful home boasts an impressive six bedrooms, making it ideal for families or those who enjoy hosting guests. The property features three spacious reception rooms, providing ample space for relaxation and entertainment.

With five well-appointed bathrooms, convenience and comfort are at the forefront of this residence, ensuring that busy mornings and evening routines are effortlessly managed. The character of the property is evident throughout, with period features that add to its unique charm and appeal.

For those with a vehicle, there is an integral garage and ample parking available too, a valuable asset in this desirable location. Skircoat Green is known for its picturesque surroundings and community spirit, making it a wonderful place to call home.

Fern Cottage presents a rare opportunity to acquire a piece of history, combined with modern living comforts. This property is perfect for anyone seeking a spacious and characterful home in a sought-after area. Do not miss the chance to make this enchanting residence your own.



Council Tax Band: F



Entrance Atrium

This dramatic glass entrance atrium has a handcrafted oak spiral staircase with south facing balcony with panelled and glazed balustrading which leads to the Study. Exposed stonework and, a limestone travertine floor, oak doors open to built-in cupboards providing coat hanging and storage facilities.

From the Entrance Hall a door opens to the

Downstairs cloakroom

With a modern white two-piece suite comprising hand wash basin with mixer tap, low flush W/C, one double radiator, inset spotlight fittings and a limestone travertine tiled floor.

From the Entrance Hall a glass panelled door opens to the

Inner Hall

With hand crafted oak panelling and matching delph rack.

From the Inner Hall a door opens to the

Integral garage & workshop

With power and light, one double radiator, fitted cupboards providing excellent storage facilities and an electric up and over door,

From the Inner Hall a door opens to the

Downstairs shower room

With modern white three-piece suite comprising hand wash basin with mixer tap, low flush W/C and corner shower cubicle with handheld and overhead rainfall shower units. Inset spotlights to the ceiling, plumbing for a washing machine and a tiled floor.

From the Inner Hall a door opens into a

Small Hall

With a limestone travertine tiled floor and door to

Bedroom four

This ground floor double bedroom has a double glazed window to the rear elevation and Velux double glazed skylight window. Inset spotlight to the ceiling, fitted shelves and a fitted carpet.

Door to

En suite shower room

With hand wash basin with mixer tap, low flush W/C and fully tiled shower cubicle with Mira shower unit, panelled ceiling with inset spotlight fittings.

From the Inner Hall a door opens to the

Utility Room

This spacious utility room has a double-glazed window to the side elevation and a side entrance door. It is fitted with a range of wall and base units with a stainless-steel single drainer sink unit, and matching work surfaces. One double radiator and a tiled floor.

From the Inner Hall a door opens to the

From the dining room a feature modern oak, steel and glazed and glazed staircase leads to the

Laundry Room

With plumbing for two automatic washing machines and power for two tumble dryers. Two hand wash basins in vanity unit with mixer taps, inset spotlight fittings to the ceiling, one double radiator and a tiled floor.

From the Inner Hall double doors open to a

Store room

With fitted shelves providing excellent storage facilities.

From the Inner Hall a glass panelled door opens to the

Dining room

At the centre of this stunning residence is a large dining room which has a double-glazed window to the rear elevation, cornice to ceiling, inset spotlight fittings and a limestone travertine tiled floor. There is a solid oak, steel and glass main feature staircase leading to the first-floor accommodation.

From the Dining Room through to a

Hall

With cornice to ceiling, limestone travertine tiled floor and a door to the front elevation providing access to the front garden.

From the Hall a panelled door opens into the

Lounge

This delightful south facing room has an angular bay window to the front elevation incorporating double glazed units and enjoying an attractive garden outlook. There is a feature coal effect living flame Venetian style gas fire on a matching hearth, wall mounted TV fittings, and to each side of the fireplace there are built-in cupboards and shelves providing excellent display facilities. Ornate cornice to ceiling, inset spotlight fittings and a fitted carpet.

From the Hall a glass panelled door opens into the

Breakfast room

The breakfast room has purpose built and hand-crafted furniture, and an angular bay window to the front elevation incorporating double glazed units with an attractive garden outlook, encased coal effect living flame gas fire set in the brick inglenook fireplace with matching stone hearth. To one side of the fireplace there are built-in cupboards providing useful storage facilities, cornice to ceiling, inset spotlight fittings and a limestone travertine tiled floor.

From the Breakfast Room through to the

Fitted Kitchen

The kitchen has bespoke units incorporating matching Corian work surfaces with two sink units with mixer taps, Meile electric and gas hobs, Meile electric oven and grill, built-in Meile steam oven, Miele microwave, extractor hood, Miele integral Fridge, Miele integral freezer, Fisher & Paykel American fridge freezer, centre island with fitted drawers, and an integrated dishwasher. This attractive kitchen is tiled around the work surfaces with complementing colour scheme to the remaining walls, inset spotlight fittings to the ceiling, double glazed window to the rear elevation and a limestone travertine tiled floor.

Half landing

With a period, mid-century leaded and stained-glass arch window to the rear elevation. From the half landing stairs continue to the

Landing

With an oak floor. From the Landing a door opens to the

Master bedroom

This spacious master bedroom has an angular bay window to the front elevation with double glazed units and incorporating a window seat, radiator with cover, cornice to ceiling with inset spotlight fittings, TV point and an oak floor.

From the Master Bedroom a door opens to the

Dressing room

From the Master Bedroom a door opens to the

En suite bathroom

With modern white three-piece suite comprising pedestal wash basin with mixer tap, low flush W/C and a jacuzzi styled panelled bath. The en suite is fully tiled including the floor, has a double-glazed window to the rear elevation, two heated towel rail/radiators, and inset spotlight fittings to the ceiling.

From the Landing a door opens to

Bedroom two

This second double bedroom has an angular bay window to the front elevation with double glazed units and incorporating a window seat with radiator and cover beneath, built-in wardrobes to one wall with matching drawers, built-in workstation, fitted shelves, TV point, cornice to ceiling with inset spotlight fittings and an oak floor.

From the Bedroom a door opens to an

En suite shower room

With white three-piece suite comprising hand wash basin with mixer tap, low flush W/C and shower cubicle with shower unit. The en suite is fully tiled including the floor and has a double-glazed window to the front elevation, inset spotlight fittings, and an extractor fan.

From the Landing a door opens to

Bedroom five

With a double-glazed window to the rear elevation, built-in wardrobe to one wall, one double radiator and an oak floor.

From the Landing a door opens to the

Family bathroom

With modern white four-piece suite comprising hand wash basin with mixer tap, low flush W/C, paneled bath with a mixer tap and an enclosed corner shower cubicle with overhead and hand held shower units, body jets, and a seat. This family bathroom is fully tiled including the floor and has an original art deco leaded window to the rear elevation, inset spotlight fittings to the ceiling and one single radiator.

From the Landing a paneled door opens into

Study

With French doors opening onto the balcony of the glass entrance atrium to the front. Double glazed window to the rear elevation, built-in cupboards providing useful storage facilities, one double radiator and an oak floor.

From the glazed entrance atrium, a handcrafted oak spiral staircase leads to the

Sun balcony

Enjoying a view of the garden and providing access to Bedroom 3/Office. One double radiator and a limestone travertine floor

From the Sun Balcony a door opens to

Bedroom three/ office

This spacious double bedroom is presently used as an office and has an angular bay window to the front elevation with double glazed units and enjoying an attractive garden outlook, double glazed window to the rear elevation providing this room with its light and spacious aspect. This double bedroom has a Mezzanine floor, which is presently used for storage but was designed to provide a further sleeping area, two double radiators, inset spotlight fittings to the ceiling and an oak floor

General

The property is constructed of stone and is surmounted with a stone slate roof. It has the benefit of all mains services, gas, water and electric with the added benefit of double glazing and gas central heating with under floor heating to the ground floor. The property benefits from limestone travertine flooring to the ground floor with oak boarded floors to the first floor. It has individually designed and handcrafted paneled oak doors with leaded glazed lights throughout. The property is freehold and is in council tax band F.

External

To the front of the property there are electric gates which open onto an enclosed south facing garden with a drive leading to the integral garage and providing off road parking for several vehicles. There is a large lawn with mature plants, trees, and shrubs. To the rear of the property there is a flagged patio and gravelled area.

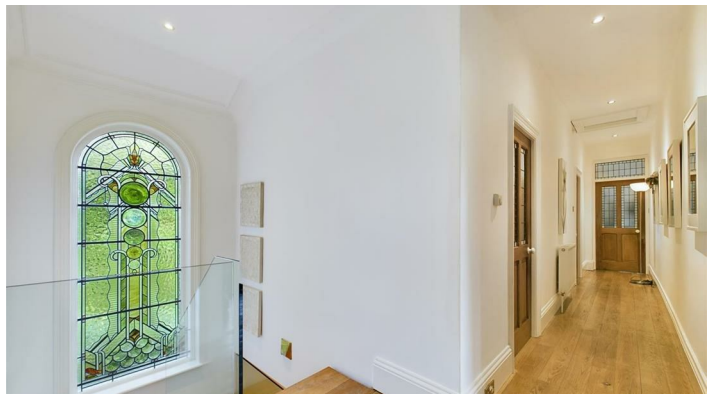
To View

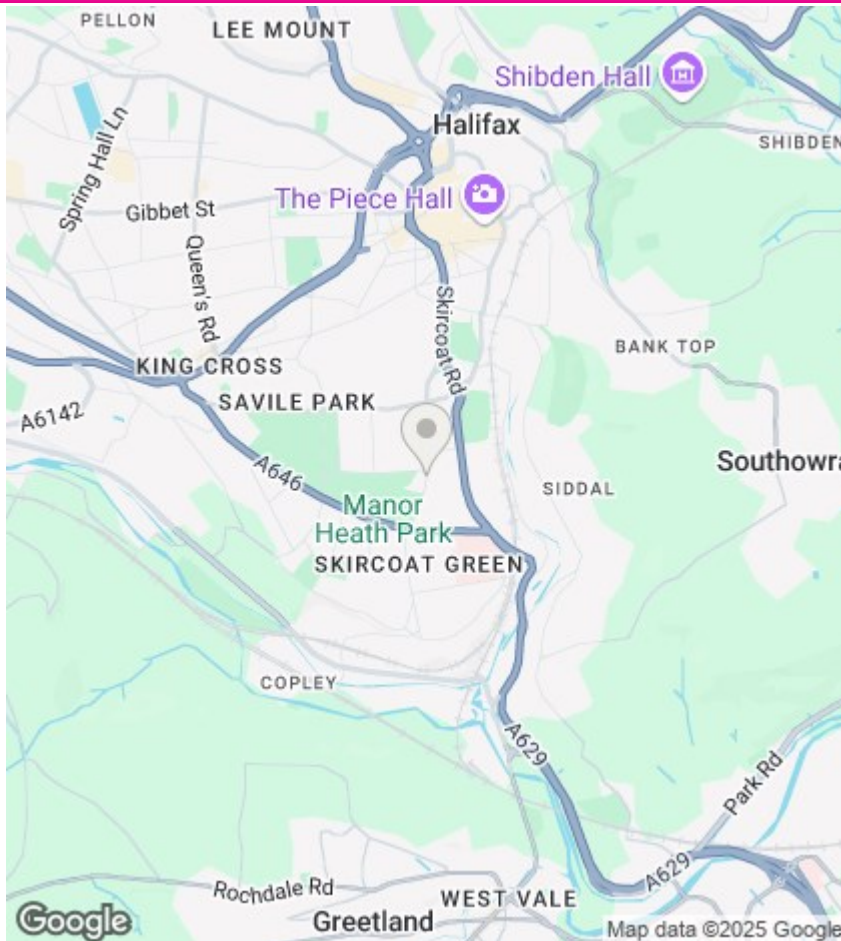
Strictly by appointment please telephone Property@Kemp&Co on 01422 349222.

Directions

Sat Nav HX3 OBH







Directions

Viewings

Viewings by arrangement only. Call 01422 349222 to make an appointment.

EPC Rating:

Energy Efficiency Rating		
	Current	Potential
Very energy efficient - lower running costs		
(92 plus) A		
(81-91) B		
(69-80) C		
(55-68) D		
(39-54) E		
(21-38) F		
(1-20) G		
Not energy efficient - higher running costs		
England & Wales		EU Directive 2002/91/EC

