



Upper Maisonette, 51 Stoke Newington Church Street, London, N16 0AR

A super, split level three bedroom upper maisonette with wonderful panoramic views of the London skyline. South facing garden, balcony and terrace.

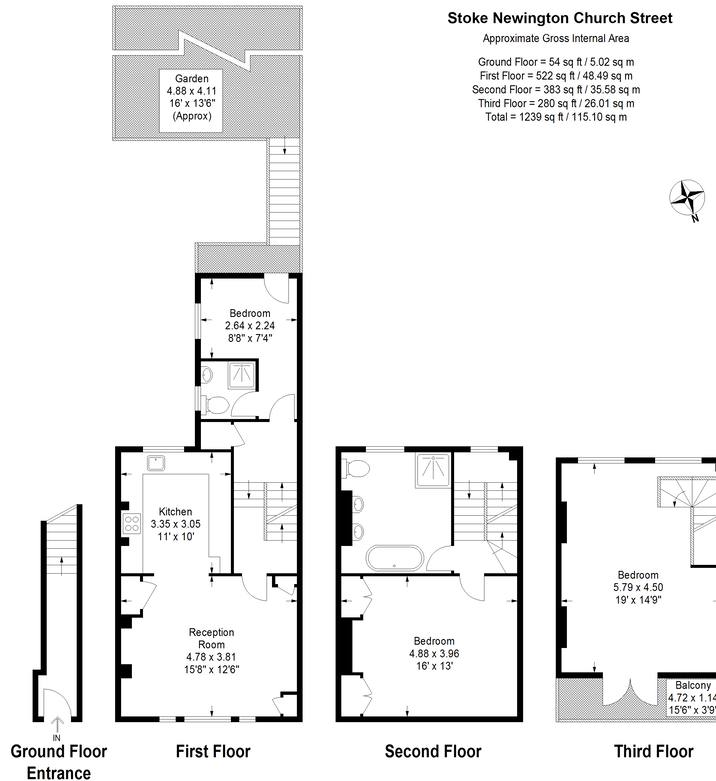
Guide Price £950,000
Leasehold

- 3 Bedrooms
- Council Tax Band: D
- EPC Rating: C
- Openplan Living
- Bespoke kitchen

A stunning and very spacious, upper maisonette arranged over three floors measuring 1239 square feet. There are wonderful panoramic southerly views over London and the accommodation has super, natural light. The top floor is a huge bedroom or second entertaining space with small terrace. On the floor below is a large front bedroom and very spacious and beautifully appointed bathroom. The first floor is open plan with large reception room with limestone fireplace opening onto a bespoke kitchen with granite worktops and built in appliances. Steps down to a rear bedroom with en-suite shower room. A door leads onto a small balcony with steps down to a private south facing patio garden. Stoke Newington Church Street is a much admired and vibrant area with an eclectic mix of local shops, bars and restaurants. both Abney Park and Clissold Park offer peaceful green spaces and there are regular transport links to both the City and West End. New Leasehold. ground rent £250 per annum. This property is owned by an employee of the selling agents



Julian Reid
51 Stoke Newington Church Street London N16 0AR
jreid@julianreid.co.uk Fax: 020 7923 8651
+44 (0) 20 7923 8650



JULIAN REID SPECIAL DISCLAIMER:-
 For Illustration Purposes Only - Not To Scale
 Floor plan For Julian Reid

Important notice: Julian Reid, their clients and any joint agents give notice that: 1: They are not authorized to make or give representations or warranties in relation to the property either here or elsewhere, either on their own behalf or on behalf of the client or otherwise. They assume no responsibility for any statement that may be made in these particulars. These particulars do not form part of any offer or contract and must not be relied upon as statements or representations of fact. 2: Any areas, measurements or distances are approximate. The text, photographs and plans are for guidance only and are not necessarily comprehensive. It should not be assumed that the property has all necessary planning, building regulation or other consents and Julian Reid have not tested any services, equipment or facilities. Purchasers must satisfy themselves by inspection or otherwise.

