

Julian Reid



63b Lordship Road, London, N16 9JH

Arranged on the garden floor of this fine, converted and double fronted late Victorian villa, a two bedroom flat with two patio garden requiring updating and redecoration.

Guide Price £730,000
Leasehold plus Share of Freehold

- In need of updating
- Council Tax Band: D
- EPC Rating: D
- Excellent location
- 2 bedrooms

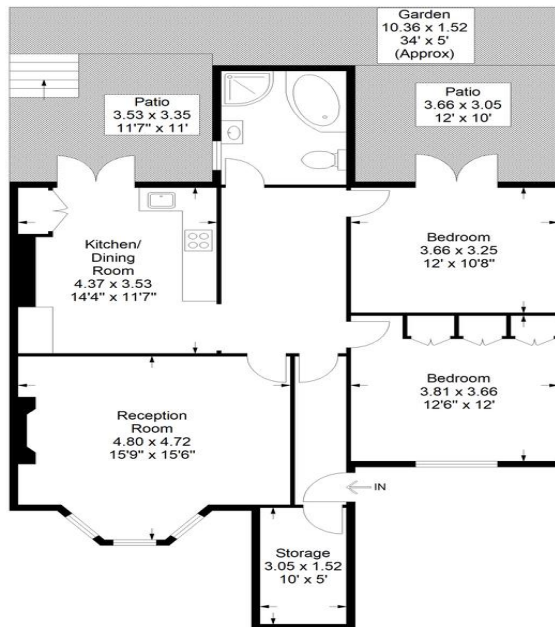
A well proportioned and completely self-contained two bedroom flat arranged on the garden floor of this fine, converted late Victorian double fronted villa. The accommodation which requires updating and redecoration presents a rare opportunity to create a super home on a very popular location within a very short walk of both Stoke Newington Church Street and Clissold Park. Separate, self-contained entrance with front reception room, kitchen/diner, two double bedrooms and bathroom. From both the kitchen and rear bedroom there is access onto private, west facing patios. Lordship Road runs north from Stoke Newington Church Street and the property is well placed for local shops and transport and all that this interesting and vibrant area of London has to offer.



Julian Reid
51 Stoke Newington Church Street London N16 0AR
jreid@julianreid.co.uk Fax: 020 7923 8651
+44 (0) 20 7923 8650

Lordship Road

Approximate Gross Internal Area
Ground Floor = 947 sq ft / 87.98 sq m
Total = 947 sq ft / 87.98 sq m



Ground Floor

JULIAN REID SPECIAL DISCLAIMER:-
For Illustration Purposes Only - Not To Scale
Floor plan For Julian Reid

Important notice: Julian Reid, their clients and any joint agents give notice that: 1: They are not authorized to make or give representations or warranties in relation to the property either here or elsewhere, either on their own behalf or on behalf of the client or otherwise. They assume no responsibility for any statement that may be made in these particulars. These particulars do not form part of any offer or contract and must not be relied upon as statements or representations of fact. 2: Any areas, measurements or distances are approximate. The text, photographs and plans are for guidance only and are not necessarily comprehensive. It should not be assumed that the property has all necessary planning, building regulation or other consents and Julian Reid have not tested any services, equipment or facilities. Purchasers must satisfy themselves by inspection or otherwise.

