

Julian Reid



Flat 2, 34a Lordship Park, London, N16 5UD

Spacious one bedroom flat on the ground floor of this large converted Victorian terraced house with private patio which in turn leads to a large south facing communal garden. No onward chain.

**Guide Price £425,000**  
**Leasehold**

- One bedroom
- Council Tax Band: C
- EPC Rating: 69
- Private terrace
- Communal garden

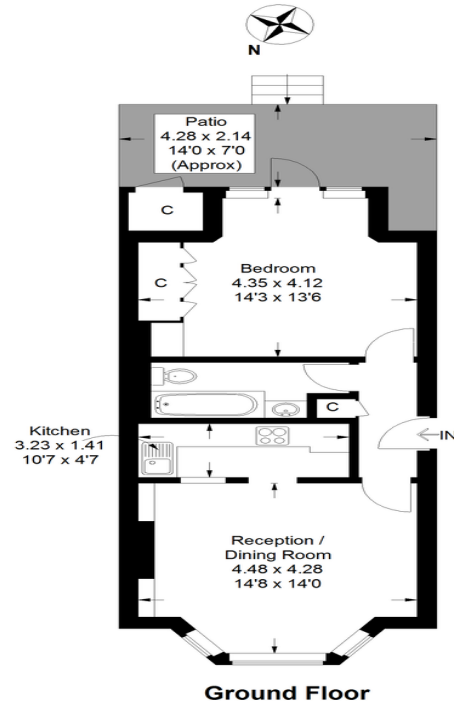
Spacious one bedroom flat on the ground floor of this large converted Victorian terraced house. Good sized living room and recessed kitchen, bathroom and bedroom with doors onto private patio which in turn leads to a large south facing communal garden. Lordship Park is located just north of Clissold Park and mid way between Stoke Newington Church Street and the excellent transport facilities of Finsbury Park. Regular bus services, Piccadilly and main line train services are all easily accessible.



Julian Reid  
51 Stoke Newington Church Street London N16 0AR  
jreid@julianreid.co.uk Fax: 020 7923 8651  
+44 (0) 20 7923 8650

## Lordship Park, N16

Approximate Gross Internal Area  
528 sq ft / 49.1 sq m



For Illustration Purposes Only - Not To Scale  
Floor plan for Julian Reid  
Ref:129187

**Important notice:** Julian Reid, their clients and any joint agents give notice that: 1: They are not authorized to make or give representations or warranties in relation to the property either here or elsewhere, either on their own behalf or on behalf of the client or otherwise. They assume no responsibility for any statement that may be made in these particulars. These particulars do not form part of any offer or contract and must not be relied upon as statements or representations of fact. 2: Any areas, measurements or distances are approximate. The text, photographs and plans are for guidance only and are not necessarily comprehensive. It should not be assumed that the property has all necessary planning, building regulation or other consents and Julian Reid have not tested any services, equipment or facilities. Purchasers must satisfy themselves by inspection or otherwise.

