

# Whiteheath Avenue

Ruislip • Middlesex • HA4 7PR

Guide Price: £695,000



coopers  
est 1986



# Whiteheath Avenue

**Ruislip • Middlesex • HA4 7PR**

Offered to the market chain free, this former Whiteheath School caretaker's house is a three bedroom detached home with excellent potential in a sought-after Ruislip location. The ground floor features a bright living room, separate dining room, practical kitchen and a spacious rear conservatory overlooking the garden, providing flexible space for family living.

Upstairs are three well-proportioned bedrooms, along with a family bathroom and separate WC. With a total floor area of approx. 1,064 sq ft the property offers generous accommodation with scope to modernise or extend (STPP). Ideally positioned for local schools, shops and transport links, this is a rare opportunity not to be missed.

Chain free

Detached home

Three bedrooms

Living room

Dining room

Kitchen

Downstairs WC

Family Bathroom

Garden

Off street parking

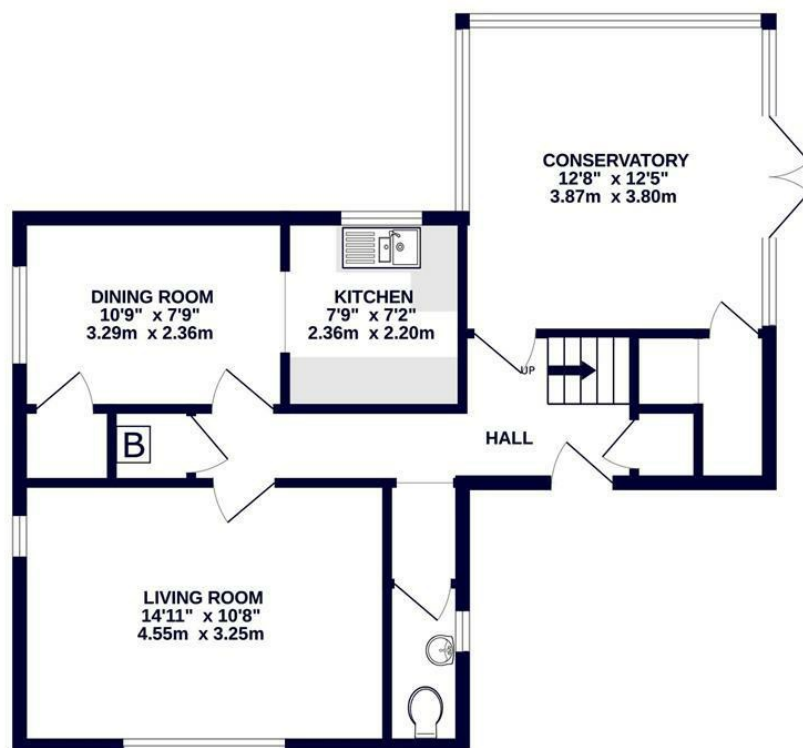
These particulars are intended as a guide and must not be relied upon as statements of fact. Your attention is drawn to the Important Notice on the last page.







GROUND FLOOR  
618 sq.ft. (57.5 sq.m.) approx.



1ST FLOOR  
446 sq.ft. (41.4 sq.m.) approx.



**coopers**  
est 1986

TOTAL FLOOR AREA : 1064 sq.ft. (98.9 sq.m.) approx.

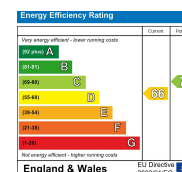
Whilst every attempt has been made to ensure the accuracy of the floorplan contained here, measurements of doors, windows, rooms and any other items are approximate and no responsibility is taken for any error, omission or mis-statement. This plan is for illustrative purposes only and should be used as such by any prospective purchaser. The services, systems and appliances shown have not been tested and no guarantee as to their operability or efficiency can be given.  
Made with Metropix ©2025



**coopers**  
est 1986

**126-128 High Street, Ruislip,  
Middlesex, HA4 8LL**  
ruislipsales@coopersresidential.co.uk

**CoopersResidential.co.uk**



**Important Notice:** These particulars, whilst believed to be accurate are set out as a general outline only for guidance and do not constitute any part of an offer or contract. Intending purchasers should not rely on them as statements or representation of fact, but must satisfy themselves by inspection or otherwise has the authority to make or give any representation or warranty in respect of the property.