

# Northwood Road

Harefield • Middlesex • UB9 6PW

Offers In Excess Of: £600,000



coopers  
est 1986



# Northwood Road

Harefield • Middlesex • UB9 6PW

Set in the heart of Harefield, this four bedroom detached home combines modern interiors with a village setting just moments from local shops and schools. The property features a spacious living room leading to a stylish kitchen and dining area with garden access, along with a ground floor ensuite bedroom.

Upstairs offers two generous doubles, a modern family bathroom, and a versatile single room. Outside, there is driveway parking for 2 to 3 cars and a private garden with lawn and patio space. With active planning permission for a first floor extension to create an additional bedroom, this home offers exciting potential. Excellent transport links include nearby Denham, Northwood, and Ruislip stations, as well as easy access to the A40/M40/M25.

Four bedroom detached home

Village setting location

Spacious living room

Stylish fitted kitchen

Ground floor en suite bedroom

Two large double bedrooms

Versatile single bedroom

Generous driveway parking

Private lawned garden

Planning permission approved

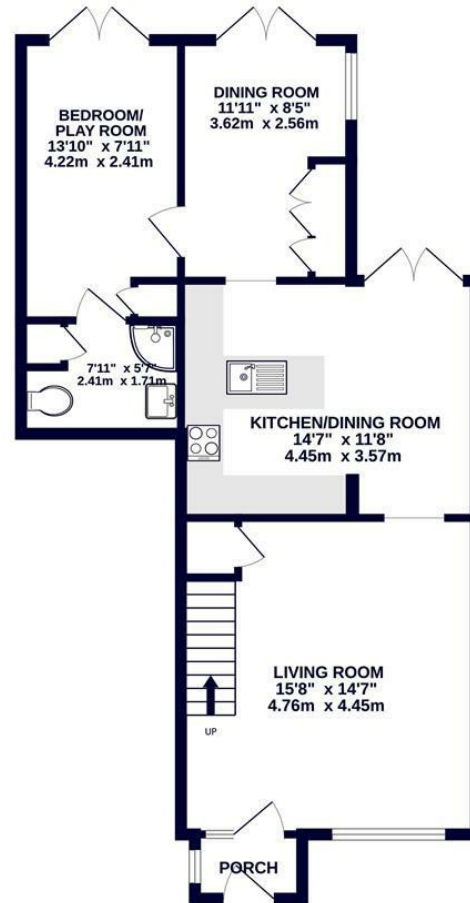
These particulars are intended as a guide and must not be relied upon as statements of fact. Your attention is drawn to the Important Notice on the last page.



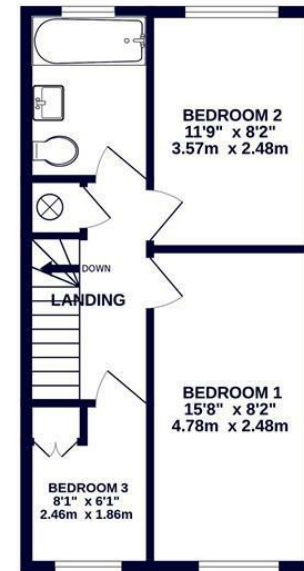




GROUND FLOOR  
700 sq.ft. (65.0 sq.m.) approx.



1ST FLOOR  
420 sq.ft. (39.0 sq.m.) approx.



**coopers**  
est 1986

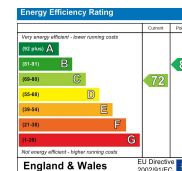
TOTAL FLOOR AREA: 1119 sq.ft. (104.0 sq.m.) approx.  
Whilst every attempt has been made to ensure the accuracy of the floorplan contained here, measurements of doors, windows, rooms and any other items are approximate and no responsibility is taken for any error, omission or misstatement. This plan is for illustrative purposes only and should be used as such by any prospective purchaser. The services, systems and appliances shown have not been tested and no guarantee as to their operability or efficiency can be given.  
Made with Memphis i3005.



**coopers**  
est 1986

126-128 High Street, Ruislip,  
Middlesex, HA4 8LL  
ruislipsales@coopersresidential.co.uk

**CoopersResidential.co.uk**



Important Notice: These particulars, whilst believed to be accurate are set out as a general outline only for guidance and do not constitute any part of an offer or contract. Intending purchasers should not rely on them as statements or representation of fact, but must satisfy themselves by inspection or otherwise has the authority to make or give any representation or warranty in respect of the property.