

The Sigers

Pinner • Middlesex • HA5 2QH

Asking Price: £400,000



coopers
est 1986

The Sigers

Pinner • Middlesex • HA5 2QH

A well-presented Two bedroom maisonette situated in the desirable residential area of The Sigers.

This spacious property benefits from its own private entrance. Briefly comprises two bedrooms, a fitted kitchen, bathroom, and a generous lounge/diner, double glazing, and gas central heating – ideal for first-time buyers or investors.

TWO BEDROOM

FAMILY BATHROOM

MODERN CONDITION THROUGHOUT

COMPLETED ONWARD CHAIN

SOUGHT AFTER LOCATION

IDEAL FOR FIRST TIME BUYERS AND INVESTORS

688 SQ.FT

These particulars are intended as a guide and must not be relied upon as statements of fact. Your attention is drawn to the Important Notice on the last page.





LOCATION

This property is ideally located just a short walk from Eastcote High Street, which boasts a variety of shops, cafés, and restaurants. The nearby high streets of Pinner, Ruislip, and Ruislip Manor also offer an excellent selection of dining, shopping, and leisure options. Eastcote is surrounded by scenic woodland, parks, and open green spaces, while Ruislip offers additional recreational areas, including the popular Ruislip Lido. For commuters, Eastcote, Ruislip, and Ruislip Manor stations provide access to both the Metropolitan and Piccadilly lines, with the Central Line available at South Ruislip station. Motorists will also benefit from easy access to the A40, connecting to Central London and the Home Counties. Families are well catered for, with a number of highly regarded schools and nurseries located nearby.

DESCRIPTION

Situated in a desirable residential area, this well-presented maisonette on The Sigers offers spacious and comfortable living with the added benefit of stunning communal gardens. The property opens up to a bright and airy hallway that connects to all rooms. The home features a generous lounge/diner, ideal for relaxing or entertaining, with plenty of natural light. The kitchen is well-equipped and functional, with ample worktop space and storage. There are two good-sized bedrooms, with the main bedroom offering substantial proportions. The second bedroom makes an ideal guest room, office, or nursery. The bathroom is neatly presented with modern fittings. Further benefits include gas central heating, double glazing, and communal gardens. This maisonette presents an excellent opportunity for first-time buyers, investors, or those looking to downsize in a peaceful yet convenient location.



Schools:

Bishop Ramsey Church of England School - 0.4 miles
 Coteford Infant School - 0.4 miles
 Cannon Lane Primary School - 0.5 miles



Train:

Eastcote Station - 0.5 miles
 Ruislip Manor Station - 0.8 miles
 Pinner Station - 1.1 miles



Car:

M4, A40, M25, M40



Council Tax Band:

D

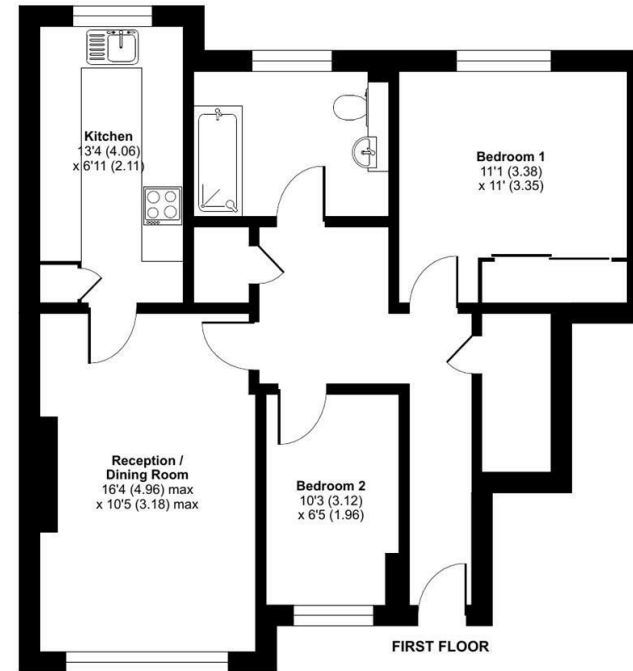
(Distances are straight line measurements from centre of postcode)



The Sigers, Pinner, HA5

Approximate Area = 688 sq ft / 63.9 sq m

For identification only - Not to scale



Floor plan produced in accordance with RICS Property Measurement 2nd Edition, incorporating International Property Measurement Standards (IPMS2 Residential). © nichcom 2025. Produced for Coopers. REF: 1342943

coopers
est 1986

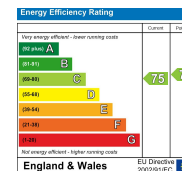
coopers
est 1986

01895 625 625

126-128 High Street, Ruislip,
Middlesex, HA4 8LL

ruislipsales@coopersresidential.co.uk

CoopersResidential.co.uk



Important Notice: These particulars, whilst believed to be accurate are set out as a general outline only for guidance and do not constitute any part of an offer or contract. Intending purchasers should not rely on them as statements or representation of fact, but must satisfy themselves by inspection or otherwise has the authority to make or give any representation or warranty in respect of the property.