

Kingsend

Ruislip • • HA4 7DD
Guide Price: £1,100,000



coopers
est 1986

Kingsend

Ruislip • • HA4 7DD

This spacious and well-designed family home offers a perfect balance of comfort and practicality. Featuring multiple reception areas, a generous kitchen, and four well-proportioned bedrooms, it provides ample space for modern living. The property benefits from a large garden, ideal for outdoor activities, as well as a garage and driveway for convenient parking. Situated in a desirable location with excellent access to local amenities and transport links, this home is perfect for families seeking space and versatility.

FOUR BEDROOM

DETACHED

GARAGE

LARGE REAR GARDEN

POTENTIAL TO EXTEND STPP

TWO RECEPTION ROOMS

ENSUITE TO MASTER BEDROOM

CARRIAGE DRIVEWAY

NO CHAIN

182.5 SQ.M

These particulars are intended as a guide and must not be relied upon as statements of fact. Your attention is drawn to the Important Notice on the last page.





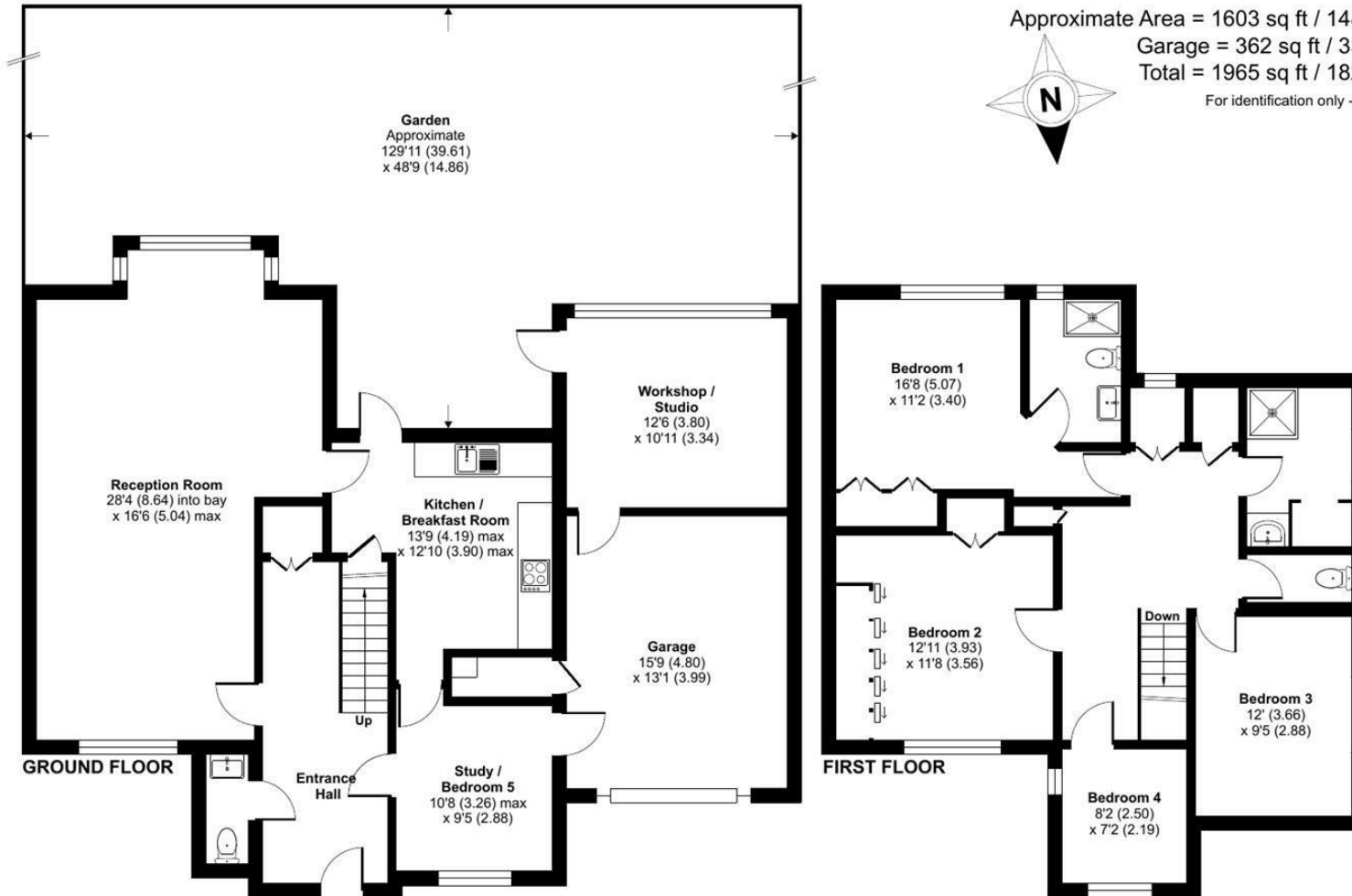
Kingsend, Ruislip, HA4

Approximate Area = 1603 sq ft / 148.9 sq m

Garage = 362 sq ft / 33.6 sq m

Total = 1965 sq ft / 182.5 sq m

For identification only - Not to scale



Floor plan produced in accordance with RICS Property Measurement 2nd Edition, Incorporating International Property Measurement Standards (IPMS2 Residential). Produced for Coopers. REF: 1254835. © nidecom 2025.

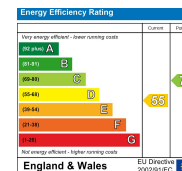
coopers
est 1986

coopers
est 1986

**126-128 High Street, Ruislip,
Middlesex, HA4 8LL**

ruislipsales@coopersresidential.co.uk

CoopersResidential.co.uk



Important Notice: These particulars, whilst believed to be accurate are set out as a general outline only for guidance and do not constitute any part of an offer or contract. Intending purchasers should not rely on them as statements or representation of fact, but must satisfy themselves by inspection or otherwise has the authority to make or give any representation or warranty in respect of the property.