

Flowers Avenue

Ruislip • Middlesex • HA4 8GF

Asking Price: £370,000



coopers
est 1986

Flowers Avenue

Ruislip • Middlesex • HA4 8GF

Flowerdown Court is a luxury apartment set on Flowers Avenue which is within the new sought after and prestigious Sandringham Grange development. A luxury two bedroom apartment that is flawlessly presented and offers gracious interiors, designed to radiate a relaxed effortless lifestyle.

Two bedroom apartment

Ground floor

Modern property

Secure parking for two cars

Long lease

Close proximity to transport links

Good catchment area for schools

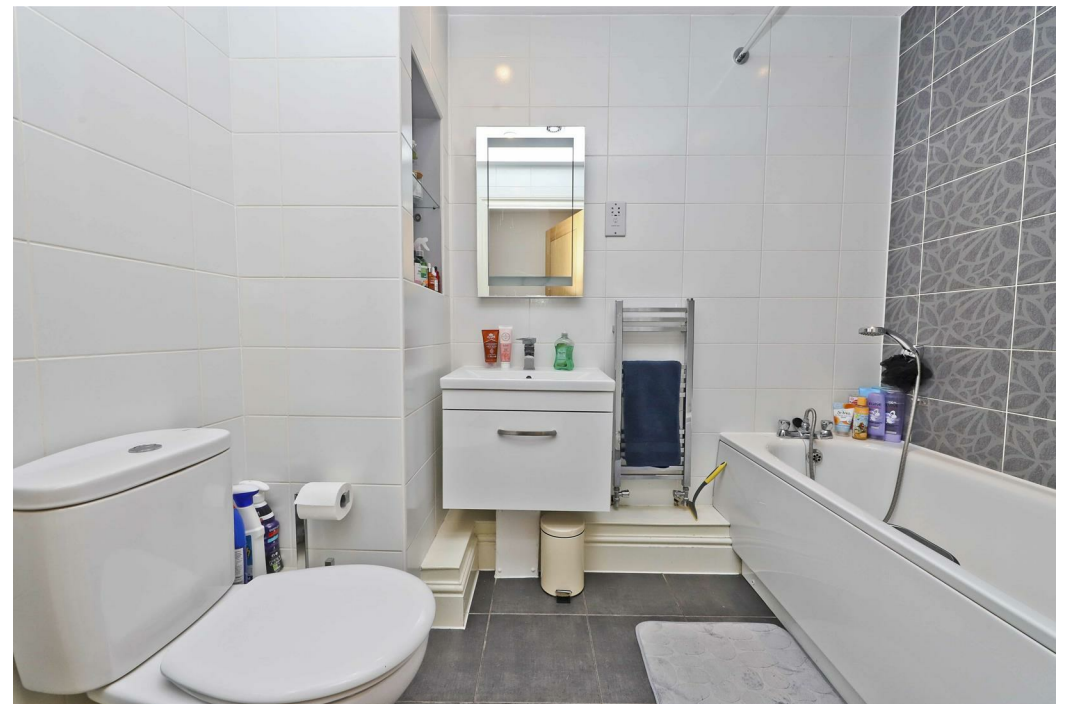
Walking distance to local high street and amenities

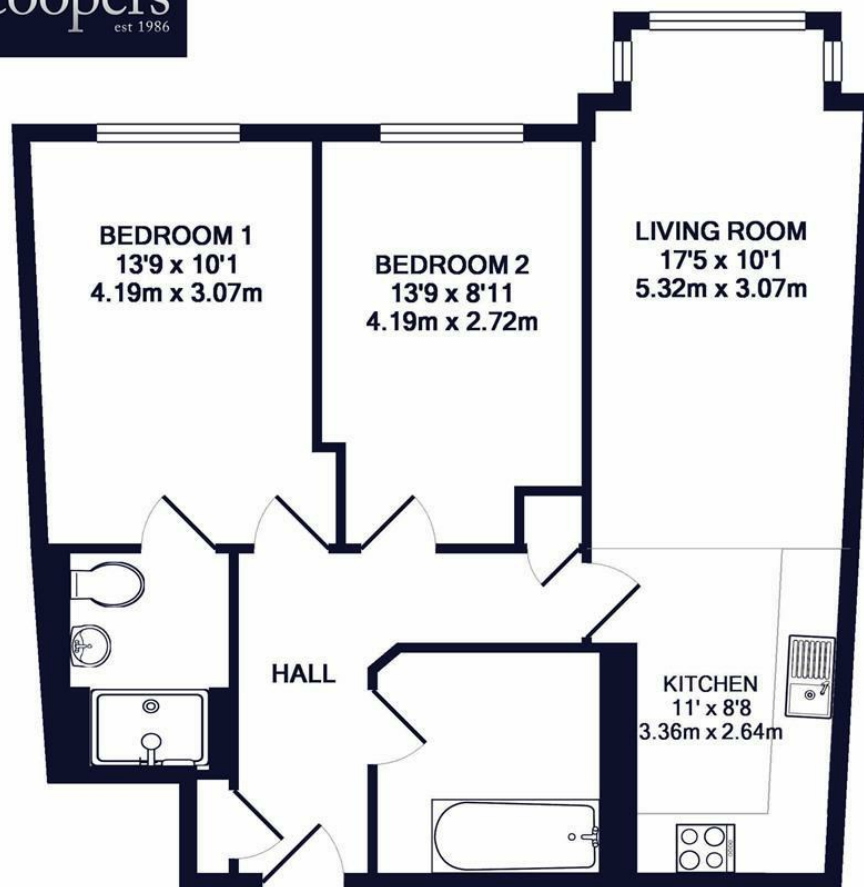
Master bedroom with en-suite

Ideal for first time buyers or investors

These particulars are intended as a guide and must not be relied upon as statements of fact. Your attention is drawn to the Important Notice on the last page.



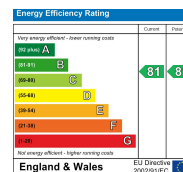




TOTAL APPROX. FLOOR AREA 702 SQ.FT. (65.2 SQ.M.)

Whilst every attempt has been made to ensure the accuracy of the floor plan contained here, measurements of doors, windows, rooms and any other items are approximate and no responsibility is taken for any error, omission, or mis-statement. This plan is for illustrative purposes only and should be used as such by any prospective purchaser. The services, systems and appliances shown have not been tested and no guarantee as to their operability or efficiency can be given

Made with Metropix ©



Important Notice: These particulars, whilst believed to be accurate are set out as a general outline only for guidance and do not constitute any part of an offer or contract. Intending purchasers should not rely on them as statements or representation of fact, but must satisfy themselves by inspection or otherwise has the authority to make or give any representation or warranty in respect of the property.