

Westwood Close

Ruislip • Middlesex • HA4 7RE

Asking Price: £550,000



coopers
est 1986

Westwood Close

Ruislip • Middlesex • HA4 7RE

Westwood Close is a sought after residential cul de sac situated in North Ruislip within the catchment area of Whiteheath School as well as being in close proximity to a number of amenities. A four bedroom extended end terrace family home, presented in immaculate condition with a flexible layout. With two bathrooms, lounge, modern kitchen breakfast room and utility room.

End of terrace residence

Four bedroom

Fitted kitchen

Spacious lounge

Separate utility room

Family bathroom

Downstairs W.C.

12ft master bedroom

Sought after cul-de-sac

1151 sq.ft

These particulars are intended as a guide and must not be relied upon as statements of fact. Your attention is drawn to the Important Notice on the last page.





Directions

From our office in Ruislip High Street, turn left and proceed until the end of the High Street. Turn left at the mini roundabout onto Bury Street. Take the fourth turning on the left onto Ladygate Lane, and Westwood Close is the fourth turning on the left hand side.

Situation

Westwood Close is a sought after residential cul de sac situated in North Ruislip within the catchment area of Whiteheath School as well as being in close proximity to a number of amenities including Ruislip Woods and Kings College playing fields. Ruislip High Street with its array of shops including Marks & Spencer and Waitrose, numerous restaurants including Zaza, Pizza Express and Café Rouge and Metropolitan/Piccadilly line station with its links to the City and Baker Street is located nearby.

Description

A four bedroom extended end terrace family home, presented in immaculate condition with a flexible layout. To the ground floor is an entrance hallway leading to a superb 20ft modern fitted kitchen breakfast room. The bright and spacious lounge overlooks the gardens. There are two good size bedrooms, plus a shower room with W.C and utility room. To the first floor are two further bedrooms and a modern bathroom with separate W.C.

Outside

To the front of the property there is a low maintenance lawned garden. The rear garden is mainly laid to lawn with a patio area and shed.



Schools:

Whiteheath Infant and Nursery School (0.05 miles)
 Whiteheath Junior School (0.14 miles)
 Bishop Winnington-Ingram CofE Primary School (0.41 miles)



Train:

West Ruislip Station (0.92 miles)
 Ruislip Station (1.25 miles)
 Ickenham Station (1.47 miles)



Car:

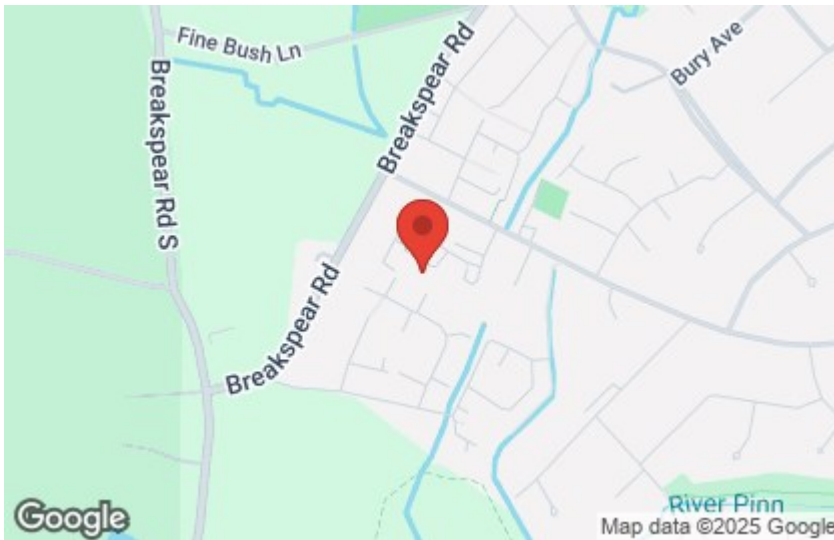
M4, A40, M25, M40



Council Tax Band:

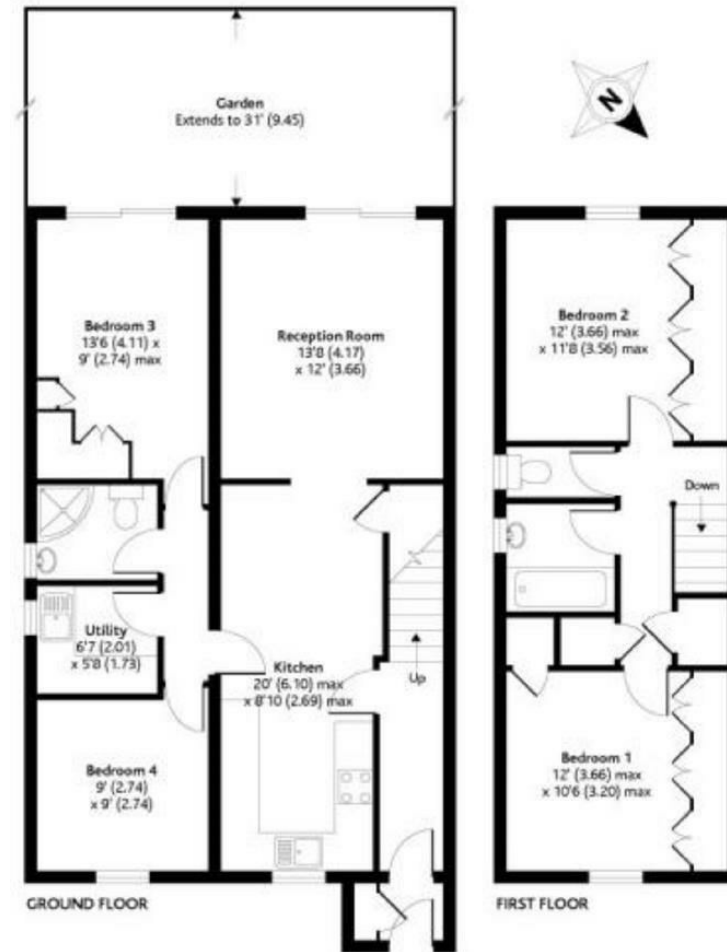
E

(Distances are straight line measurements from centre of postcode)



Westwood Close, Ruislip, Middlesex, HA4 7RE

APPROX. GROSS INTERNAL FLOOR AREA 1151 SQ FT 106.9 SQ METRES

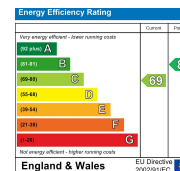


Representation of current layout is for identification only and is not to scale
 Copyright nichesomauk 2012 Produced for Gibbs Gillespie Drawing ref: 254784



01895 625 625
126-128 High Street, Ruislip,
Middlesex, HA4 8LL
 ruislipsales@coopersresidential.co.uk

CoopersResidential.co.uk



Important Notice: These particulars, whilst believed to be accurate are set out as a general outline only for guidance and do not constitute any part of an offer or contract. Intending purchasers should not rely on them as statements or representation of fact, but must satisfy themselves by inspection or otherwise has the authority to make or give any representation or warranty in respect of the property.