

Eastcote Road

Ruislip • Middlesex • HA4 8DG
Asking Price: £1,300,000



coopers
est 1986

Eastcote Road

Ruislip • Middlesex • HA4 8DG

In a sought after location, this property has a choice of generous living areas, this five bedroom, three bathroom detached residence will impress those seeking space and a convenient address, it promises a superior family lifestyle. Located on Eastcote Road in close proximity to Ruislip High Street with it's array of shops, cafés, restaurants and transport facilities.

FIVE BEDROOM

THREE BATHROOM

DETACHED

SELF CONTAINED ANNEX

DOWNSTAIRS WC

MODERN KITCHEN

SOUGHT AFTER LOCATION

CLOSE PROXIMITY TO RUISLIP HIGH STREET

OFF STREET PARKING

1940 SQ FT

These particulars are intended as a guide and must not be relied upon as statements of fact. Your attention is drawn to the Important Notice on the last page.





SITUATION

Eastcote Road is in close proximity to Ruislip High Street with its array of shops, cafés, restaurants and transport facilities and runs through the heart of Ruislip. Ruislip tube station (Metropolitan / Piccadilly line) with links into the city and Baker Street is at the end of the High Street. West Ruislip or Ruislip Gardens (Central / BR) stations are located a short distance away. For the motorist the A40/M25 is a short drive away providing access to London and the Home Counties. This house is in the catchment area for a number of highly regarded schools including BWI, Whiteheath and Bishop Ramsey.

DESCRIPTION

Upon entering the property you are greeted with a large hallway with access to the cloakroom, kitchen and 24ft living and dining room, completed with Welsh Oak bookshelf to one wall. The modern and well kept kitchen is a particular feature of the property, with Granite marble worktops and fitted Bosch appliances. An unique spiral staircase leads directly to the Master bedroom. Completing the ground floor is a self-contained annexe which offers a bedroom, bathroom and living/kitchen area. A private cosy self contained independent space, that is ideal for guests, accommodation for elderly relative or can be let out. To the first floor there are four bedrooms, one with en-suite, walk in wardrobe and the family bathroom. There is Hive heating throughout the property (control via a smart phone) and water softener too.

OUTSIDE

To the rear is a large 85 foot beautiful well maintained mature garden - sheltered by apple and other trees which affords a great sense of privacy. It also includes a pond fitted with a fountain. There are also features such as a shed (with power), greenhouse and electric garden awning. The roof has 16 solar panels (4Kw) which can supply free electricity plus generate an annual income through the government backed Feed-in-Tariff scheme. To the front there is parking for up to four cars.



Schools:

Warrender Primary 0.2 miles
Coteford Infant 0.6 miles
Bishop Ramsey Church of England 0.5 miles



Train:

Ruislip Manor 0.5 miles
Ruislip 0.5 miles
West Ruislip 1.0 miles



Car:

M4, A40, M25, M40



Council Tax Band:

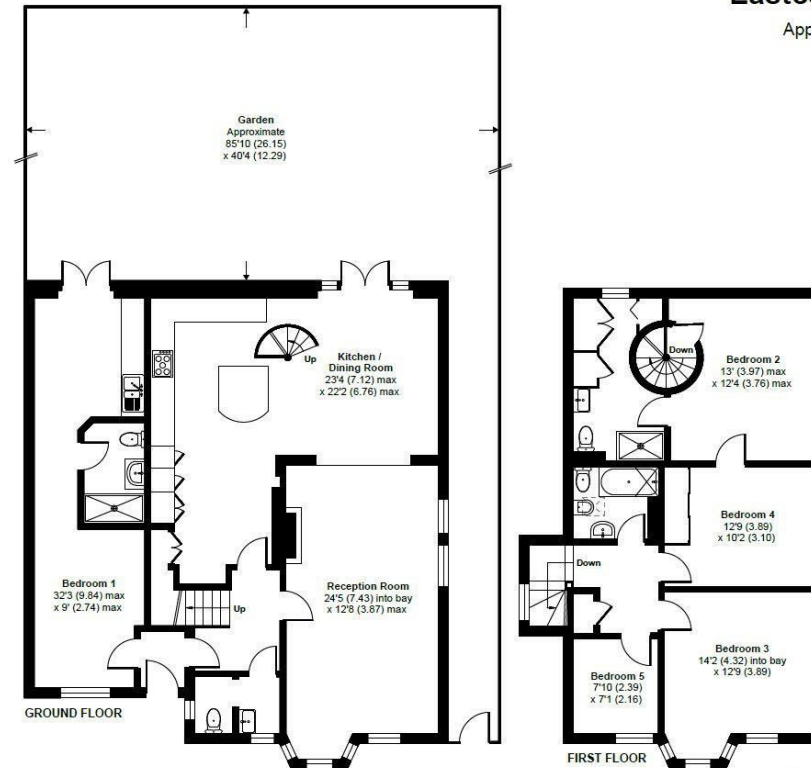
F

(Distances are straight line measurements from centre of postcode)



Eastcote Road, Ruislip, HA4

Approximate Area = 1940 sq ft / 180.2 sq m
For identification only - Not to scale



Floor plan produced in accordance with RICS Property Measurement Standards incorporating International Property Measurement Standards (IPMS2 Residential). © richetcom 2024. Produced for Coopers. REF: 1175866

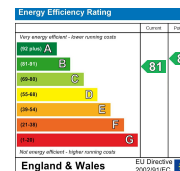
coopers
est 1986

01895 625 625

126-128 High Street, Ruislip,
Middlesex, HA4 8LL

ruislipsales@coopersresidential.co.uk

CoopersResidential.co.uk



Important Notice: These particulars, whilst believed to be accurate are set out as a general outline only for guidance and do not constitute any part of an offer or contract. Intending purchasers should not rely on them as statements or representation of fact, but must satisfy themselves by inspection or otherwise has the authority to make or give any representation or warranty in respect of the property.

coopers
est 1986