

Hill Lane

Ruislip • Middlesex • HA4 7JW
Asking Price: £400,000



coopers
est 1986

Hill Lane

Ruislip • Middlesex • HA4 7JW

An ideal opportunity for the first home buyer or investor. This two double bedroom first floor maisonette offers a great home in a well located area. Comprising a spacious lounge, fitted kitchen, modern bathroom and two bedrooms the property also benefits from a rear garden and is in within walking distance to the shops and facilities at Ruislip High Street.

First floor maisonette

Two double bedrooms

Lounge

Bathroom

Fitted kitchen

Rear garden

Great investment

Ideal starter home

Well presented throughout

Over 170 years remaining on the lease

These particulars are intended as a guide and must not be relied upon as statements of fact. Your attention is drawn to the Important Notice on the last page.





Location

Located on a quiet residential roads, a stone's throw from Ruislip High Street and it's trendy eateries, shops and transport - Ruislip tube station (Metropolitan/Piccadilly) is at the end of the High Street whilst West Ruislip (Central/BR station is also within easy walking distance. For the motorist the A40/M40 and M25 road links offering easy access to London and the Home Counties. For families, it is nearby to the local schools BWI, Whiteheath and Sacred Heart and Bishop Ramsey.

Description

Nestled in the desirable area of Hill Lane, Ruislip, this charming first-floor maisonette offers a delightful blend of comfort and convenience. The property is in great condition throughout, showcasing a welcoming reception room that provides a spacious and versatile living area. The modern kitchen is well-appointed, with ample storage and workspace, making it perfect for both everyday meals and entertaining. The maisonette features two generously sized bedrooms, each filled with natural light and offering a tranquil retreat from the hustle and bustle of daily life. The well-maintained bathroom complements the overall modern aesthetic of the property.

Outside

The property boasts a private garden, ideal for relaxing or enjoying outdoor activities. Additionally, the maisonette benefits from two external storage cupboards.



Schools:

Bishop Winnington-Ingram CofE Primary School 0.2 miles
Whiteheath Infant & Junior School 0.4 miles
Bishop Ramsey Church of England School 1.3 miles



Train:

West Ruislip 0.9 miles
Ickenham 1.4 miles
Ruislip 0.5 miles



Car:

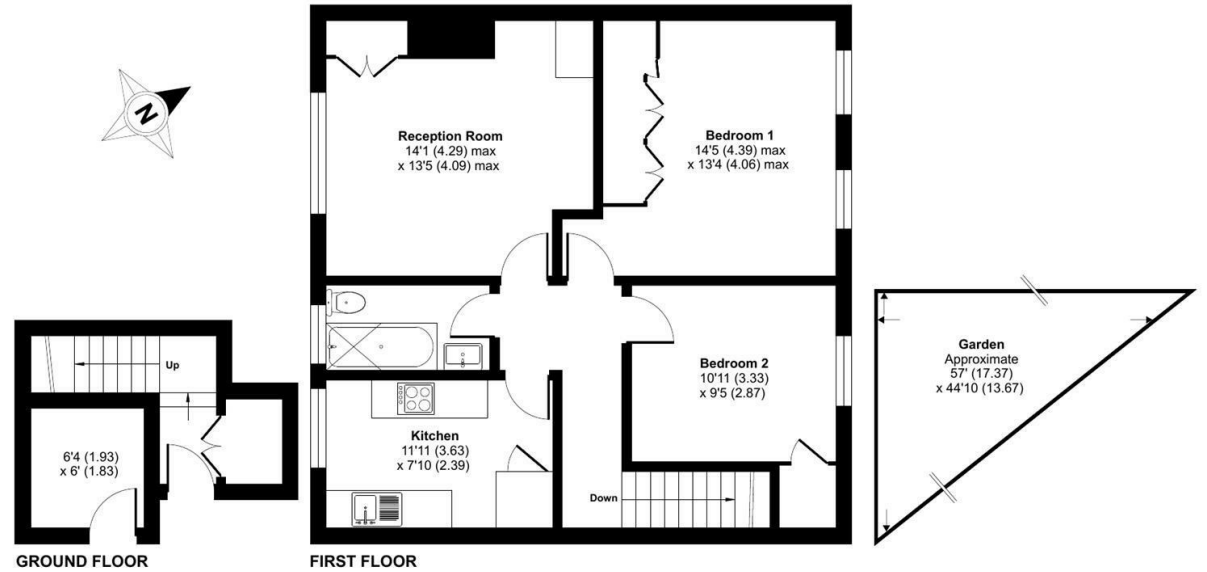
M4, A40, M25, M40



Council Tax Band:

C

(Distances are straight line measurements from centre of postcode)



Hill Lane, Ruislip, HA4

Approximate Area = 785 sq ft / 72.9 sq m
Outbuilding = 38 sq ft / 3.5 sq m
Total = 823 sq ft / 76.4 sq m

For identification only - Not to scale



Floor plan produced in accordance with RICS Property Measurement Standards incorporating International Property Measurement Standards (IPMS2 Residential). © nichecom 2024. Produced for Coopers. REF: 1178909

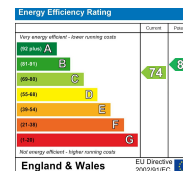


01895 625 625

126-128 High Street, Ruislip,
Middlesex, HA4 8LL

ruislipsales@coopersresidential.co.uk

CoopersResidential.co.uk



Important Notice: These particulars, whilst believed to be accurate are set out as a general outline only for guidance and do not constitute any part of an offer or contract. Intending purchasers should not rely on them as statements or representation of fact, but must satisfy themselves by inspection or otherwise has the authority to make or give any representation or warranty in respect of the property.

coopers
est 1986