



## Rotary House

, Breakspear Road, HA4 7ST

Offers In Excess Of £300,000

Set on the third floor, this one bedroom apartment is located in North Ruislip and close to Ruislip Woods and Lido. Ruislip High Street and Train Station are approximately a mile away. The property comprises a spacious lounge/diner, modern fitted kitchen, one bedroom and a bathroom. This is the perfect home for those seeking ready made, low key, luxury living with its fresh, crisp and stylish design throughout.

- One bedroom flat
- Third floor
- Family bathroom
- Living/dining room
- Private parking
- Leasehold
- Wooden flooring
- Large double bedroom
- Fitted kitchen
- 632 sq.ft.

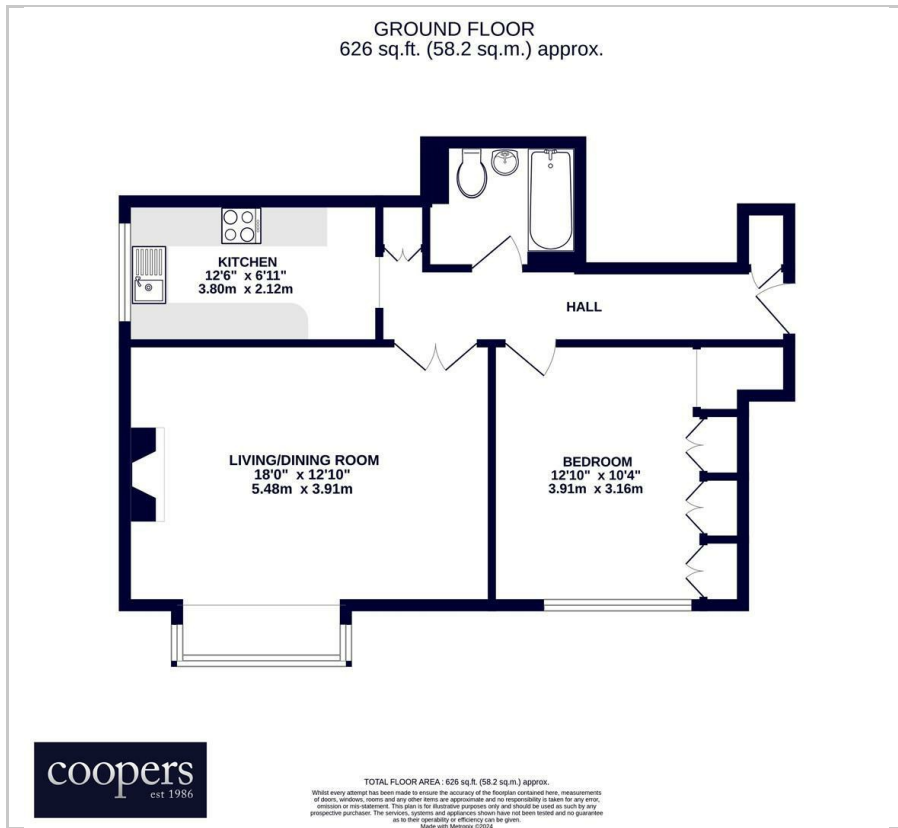
### Viewing

Please contact our Ruislip Office on 01895 625 625 if you wish to arrange a viewing appointment for this property or require further information.

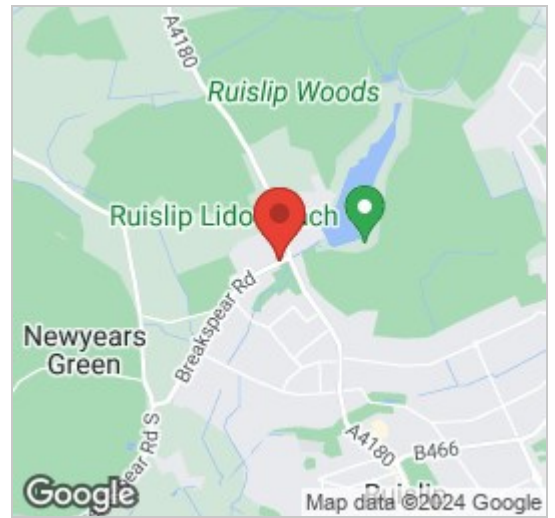




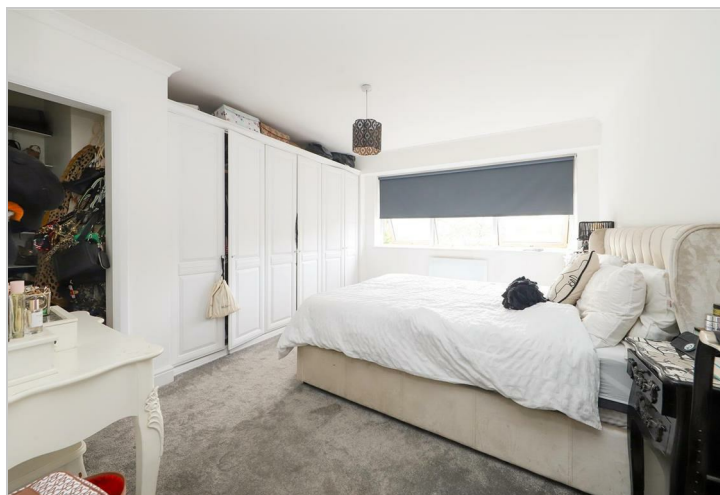
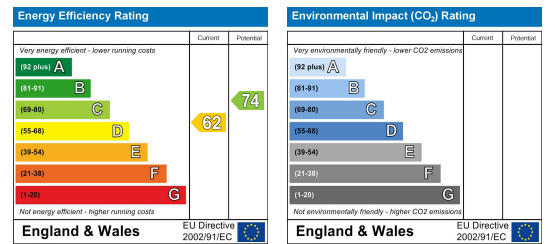
# Floor Plan



# Area Map



# Energy Efficiency Graph



These particulars, whilst believed to be accurate are set out as a general outline only for guidance and do not constitute any part of an offer or contract. Intending purchasers should not rely on them as statements or representation of fact, but must satisfy themselves by inspection or otherwise as to their accuracy. No person in this firm's employment has the authority to make or give any representation or warranty in respect of the property.