

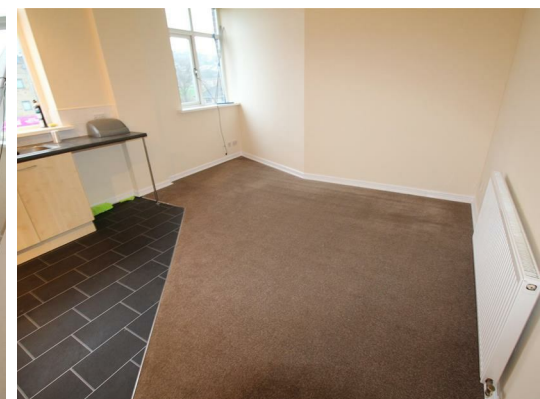


Flat 4 Woolcombers Hall, Dale Street, Shipley, BD18 3PU £92,000

TWO BEDROOMSAPARTMENT***TOWN CENTRE LOCATION***CLOSE TO AMENITIES***

HAMILTON BOWER are please to offer FOR SALE this well presented two double bedroom apartment. Early viewing is advised to fully appreciate all this property has to offer. Comprising of entrance, open plan kitchen and lounge, two double bedrooms and a house bathroom.

TO VIEW CONTACT HAMILTON BOWER TODAY!!!



EPC RATING - C

COUNCIL TAX BAND - A

ENTRANCE HALL

Entrance hallway with telephone entry system and central heating radiator.

OPEN PLAN LOUNGE/KITCHEN

With a range of fitted wall and base units, contrasting work surface incorporating a sink unit. Plumbing for an automatic washing machine. Space for a seating area with central heating radiator. Two double glazed windows allow an abundance of natural light in to the room.

BEDROOM ONE

Double bedroom with a central heating radiator and double glazed window.

BEDROOM TWO

Double bedroom with a central heating radiator and double glazed window.

BATHROOM

Three piece suite with a bath, W.c and wash basin. Double glazed window and central heating radiator.

