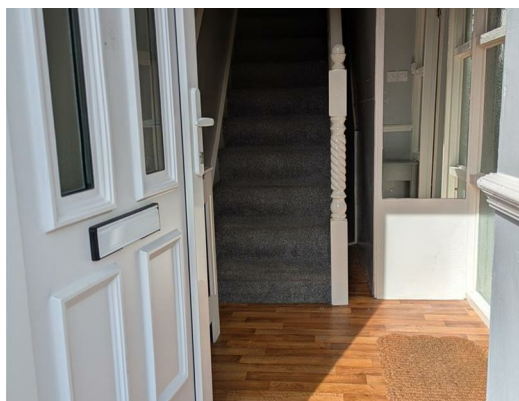
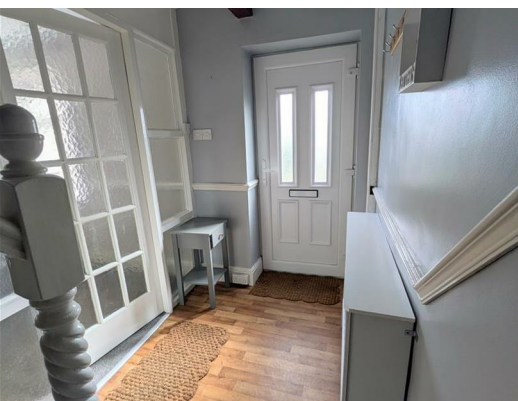




161 Albion Road, Idle, Bradford, West Yorkshire, BD10 9QN
£850

TWO BEDROOM MID TERRACE PROPERTY IN A POPULAR RESIDENTIAL LOCATION. This character cottage comprises of an entrance hall, large lounge and kitchen to the ground floor, two bedrooms and a bathroom to the first floor with garden to the front and yard to the rear. Benefits include gas central heating and double glazing.



GROUND FLOOR

ENTRANCE HALL

Useful entrance area.

LOUNGE

Spacious main reception room with exposed beams, gas fire with decorative surround, two double glazed windows and two central heating radiators. Useful under stairs storage closet.

KITCHEN

Good size kitchen with fitted wall and base units to three sides with a contrasting work surface over incorporating a stainless steel sink and mixer tap. Double electric oven and gas hob with extractor over. Tiled flooring, double glazed window and door to the rear elevation.

FIRST FLOOR

LANDING

BEDROOM

Double bedroom to the front elevation with double glazed window and central heating radiator.

BEDROOM

A second bedroom this one to the rear elevation with double glazed window and central heating radiator.

BATHROOM

Fitted three piece bathroom suite with shower over bath.

EXTERNAL

To the rear there is a yard and to the front an enclosed garden with patio and mature plants and shrubs.

EPC RATING - D

COUNCIL TAX BAND - B

