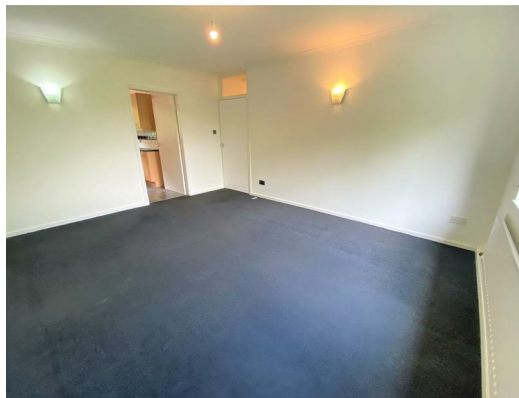




11 Baildon Wood Court, Baildon, Shipley, West Yorkshire, BD17 5QG
£695

Spacious second floor flat in a popular location close to both Baildon and Shipley with excellent road and rail access to the surrounding major towns and cities. This top floor residence benefits from modern fixtures and fittings, gas central heating and double glazing.



ENTRANCE HALL

Hallway with useful storage cupboards.

LOUNGE

Pleasant reception space with double glazed window offering extending views.

KITCHEN

Modern fitted wall and base units with contrasting work surface over incorporating a sink and taps. Electric oven and ceramic hob.

BEDROOM

Good size double bedroom with fitted mirrored robes.

BEDROOM

Generously sized second bedroom.

BATHROOM

Fitted three piece bathroom suite in white.

GARAGE

