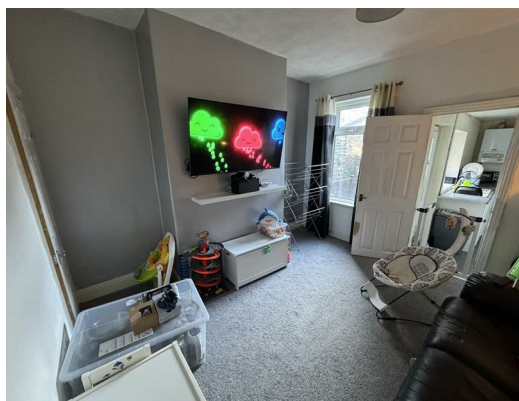




**15 Mount Street, Eccleshill, BD2 2JN**  
**£750**

Extended TWO BEDROOM mid terrace in a popular location. The property is well presented with modern fixtures, fittings and decor throughout. Ideally located close to many local amenities and transport links, this property is likely to attract significant interest, so contact us today to book a viewing.





**COUNCIL TAX BAND - A**

**EPC RATING - TBC**

## **GROUND FLOOR**

### **LOUNGE**

Good size main reception room with a double glazed window and central heating radiator.

### **DINING ROOM**

A second reception room with a useful under stairs storage cupboard, double glazed window and central heating radiator.

### **KITCHEN**

Well fitted kitchen with a range of wall and base units and work surface over. Double glazed window and door to the rear garden.

## **FIRST FLOOR**

### **LANDING**

### **BEDROOM**

Large double bedroom with a double glazed window and central heating radiator.

### **BEDROOM**

A second bedroom with a double glazed window and a central heating radiator.

### **BATHROOM**

Fitted three piece bathroom suite in white. Double glazed window and central heating radiator.

### **EXTERNAL**

Enclosed garden to the rear.

