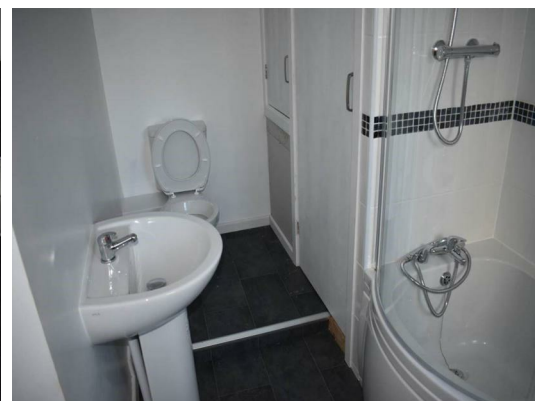
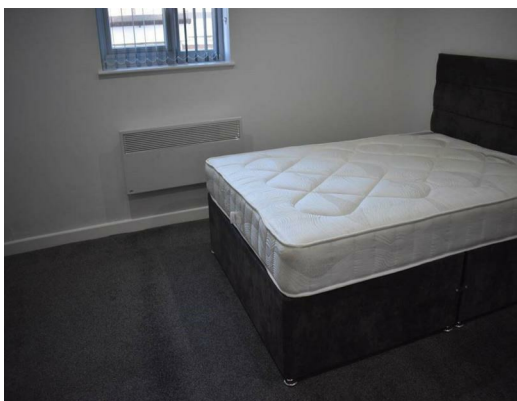
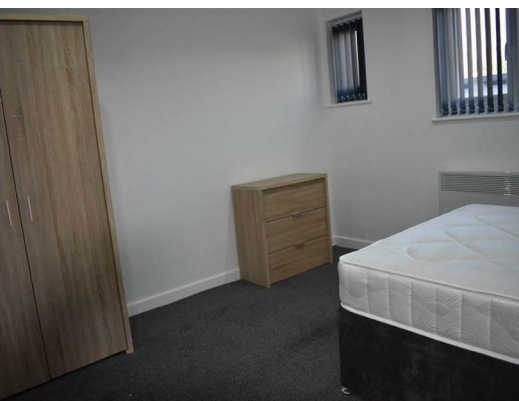




Flat 6, Queensbury Court Brighouse Road, Queensbury, Bradford, BD13 1QD £925

High quality first floor, three bedroom apartment in the popular location of Queensbury. This modern residence is well appointed and comprises of a spacious open plan living/kitchen area with fitted appliances, three bedrooms, bathroom and hallway.



EPC RATING - C

COUNCIL TAX BAND -

The apartment is set back of the main road & is close to all local amenities, local gym & swim & local Tesco.

HALLWAY

LIVING/KITCHEN

Open plan space. Modern fitted kitchen with integrated appliances.

BEDROOM

Master bedroom with double bed, chest of drawers, wardrobe, study desk and chair.

BEDROOM

Second bedroom with double bed, chest of drawers, wardrobe, study desk and chair.

BEDROOM

Third bedroom.

BATHROOM

Modern fitted bathroom suite.

