

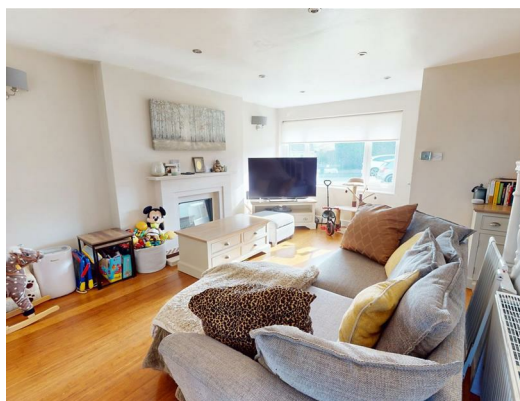


60 Langley Lane, Baildon, Bradford, West Yorkshire, BD17 6TB

Asking Price £239,950

HAMILTON BOWER are pleased to offer FOR SALE this well-presented THREE BEDROOM SEMI-DETACHED FAMILY HOME with off-street parking located in the popular residential village of Baildon, Bradford - BD17. Within close proximity to local schools, good presentation throughout, and it's popular village location, we expect this property to be popular with family buyers seeking a home in the area. Internally comprising; entrance, lounge, dining kitchen, three first floor bedrooms, bathroom and loft. Externally the property has a low-maintenance garden to the rear, a private driveway, single garage (parking) to the rear, and a lawned garden to the front.

FOR MORE INFORMATION PLEASE CONTACT HAMILTON BOWER TODAY



GROUND FLOOR

Entrance

Entrance with fitted storage ideal for coat and shoe store.

Dining Kitchen

Open-plan dining kitchen with a wide range of matching white units with complementary worktops. Offering space for a family dining table with chairs, and with access to the rear garden and pantry cupboard.

Lounge

Spacious lounge with open staircase to first floor and a view to the front. With a central fireplace and offering ample room for a large suite.

FIRST FLOOR

Primary Bedroom

Spacious primary bedroom with a view to the front of the property. Offering ample room for a large bed, side tables and wardrobes as seen.

Bedroom

Second bedroom, a further double with a rear to the front. Offering space for a double bed, side table and wardrobes.

Bedroom

Third bedroom, a single room with a view to the front of the property. Ideal for a child's bedroom or home office, with a storage cupboard to side.

Bathroom

Bathroom with frosted window and matching three-piece suite - bath with overhead shower, WC and wash basin.

EXTERNAL

Rear

Low-maintenance garden to the rear of the property with access from the side or gated rear.

Mostly paved with an astroturf section and patio area ideal for outdoor seating.

Garage

Garage to the rear of the property offering off-street parking or ideal storage space.

