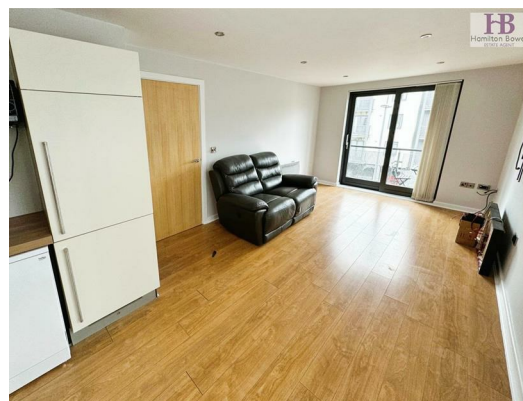




7 Kassapians, Baildon, Shipley, West Yorkshire, BD17 6AY
£795 Per Calendar Month

Welcome to KASSAPIANS, where we have to offer a well presented first floor, two double bedroom apartment. Easily accessible by the elevator, this property offer spacious modern living in a sought after location and development. Nearby local amenities include, Tesco Express, Nuffield Gym, Baildon village, Shipley market town and train station.



COUNCIL TAX BAND - B

EPC RATING - D

ENTRANCE HALLWAY

With electric wall heater and useful storage cupboard.

LOUNGE/DINER/KITCHEN

20'5" x 11" (6.22m x 3.35m)

Spacious open plan living space with an abundance of natural light from the balcony and side windows. Laminate flooring throughout. Electric heating. Fitted wall and base units with a contrasting work surface incorporating a stainless steel circular sink unit.

BEDROOM ONE

10'7" x 9'1" (3.23m x 2.77m)

Spacious bedroom with en-suite. Window to front elevation. Electric wall heater.

EN-SUITE

Shower cubicle, W.C and wash basin

BEDROOM TWO

11'5" x 10'1 (3.48m x 3.07m)

Good size double with electric heater and window to front elevation.

BATHROOM

Three piece modern white suite with bath, W.C and wash basin. Part tiling to walls.

EXTERNAL

Secure gated access to allocated parking space.

