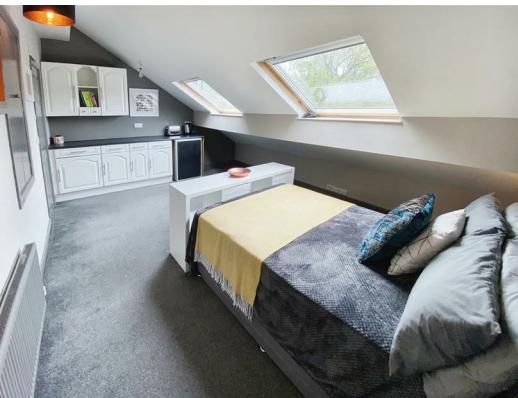




**Room 6, 1 Park Grove, Saltaire, Shipley, West Yorkshire, BD18 4DR**  
**£590 Per Calendar Month**

We are delighted to offer a ROOM TO LET in this beautiful, large Victorian house, located in a cul-de-sac, very close to both Saltaire and Shipley train stations.



A very well presented double, en-suite, second floor room is available within a shared house in Saltaire. This neutrally decorated and carpeted room is very spacious, with pleasant furnishings. With a large window, a lot of natural light streams into the room. Included in the room; Double bed, Bedside table and lamp, Large double wardrobe, Large en-suite bathroom. Single occupancy.

#### ALL BILLS INCLUDED IN RENT

- \* Period house is located in the beautiful Saltaire village
- \* Amenities right on your doorstep - banks, bars, bakery, cafes, medical practice & pharmacy, Salts Mill Diner and local shops
- \* TV aerial in every room
- \* Superfast BT fibre WiFi included
- \* Easy access to Saltaire and Shipley train stations, means 15mins to Bradford city centre and only 20mins to Leeds city centre
- \* Fortnightly cleaner for communal areas and a regular gardener are included in your rent
- \* Free parking

There are 2 house kitchens, the main one equipped with new cooker and gas hob, a fridge freezer, a Whirlpool washing machine and microwave. We also provide pots, pans, a wok, microwave, knife block, kettle, toaster, plates, cups, knives, forks and spoons - all included in the price.

All bills - council tax, water, gas, electricity and fibre optic Broadband are included in the rent, there are no hidden costs - the monthly rental figure is all you'll pay.

Call now, 01274 588158 for further information, or to arrange a viewing.

If you are in full-time professional employment, are clean, tidy, responsible and are serious about living in a high quality house with like minded housemates, then do get in contact. No DSS, unemployed, LHA or students, sorry.

Act fast, this is the last remaining room available in the

house!

Please note, you need to have held a full-time job for over 3 months in order to qualify for a tenancy in this quality house.

The landlord, as a professional landlord, is registered with the National Landlords Association as well as directly with Bradford Council.

#### ALL BILLS INCLUDED