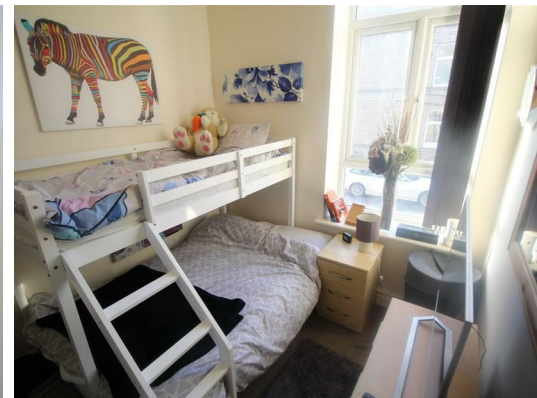




6 Charles Street, Shipley, West Yorkshire, BD17 7BL Offers In The Region Of £60,000

HAMILTON BOWER are pleased to offer to the market FOR SALE this well-presented ONE BEDROOM FIRST FLOOR APARTMENT located within a minutes walk to Shipley train station and town centre. With open-plan kitchen/living room, easy access to parking and no onward sale chain, we expect this property to be popular with first-time buyers and buy-to-let landlords. Internally comprising; open-plan kitchen/living room with dining area, double bedroom, bathroom, storage cupboard. The property sits on the first floor within the two-story building and has an intercom entrance.

TO VIEW THIS PROPERTY PLEASE CONTACT HAMILTON BOWER TODAY !



Property Information

Council Tax Band - C

EPC -

Chain Position - No onward sale chain

EXTERNAL

Access to property from main road with intercom system on main entrance door.

Kitchen

Kitchen fitted with matching wall and base units with contrasting worktops.

Appliances include - hob with oven/grill, sink with drainer and plumbing for appliances.

The kitchen is open-plan to the living room with a small dining area between the two.

Living Room

Open-plan living room through to the kitchen with dual-aspect windows.

The living room can accommodate a good-sized suite as seen.

Bedroom

Double bedroom with a view to the front of the building and space for wardrobes.

Bathroom

Bathroom with matching white three-piece suite as seen - bath with overhead shower, wc, wash basin.

