





17 Dannog Y Coed

Barry, Barry

Charming four bedroom detached home located in Pencoedtre Village with a modern kitchen/diner, master bedroom with en-suite, double garage, enclosed garden and a large driveway providing ample parking.

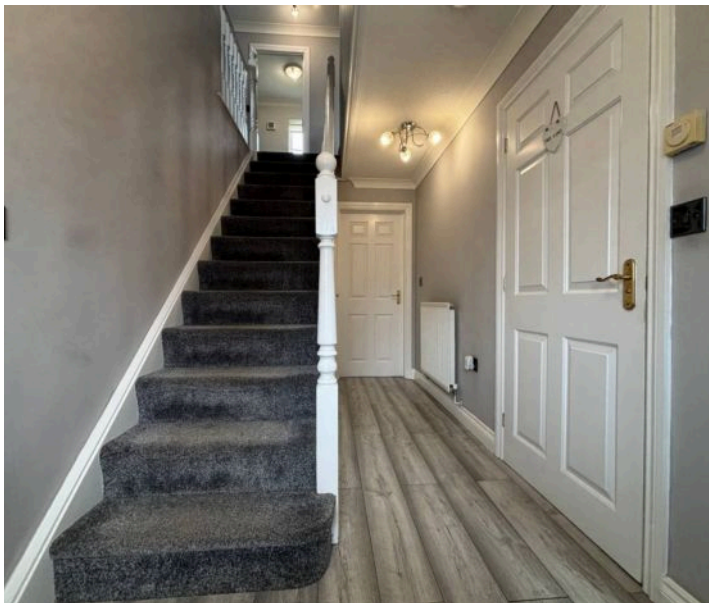
Council Tax band: F

Tenure: Freehold

EPC Energy Efficiency Rating: C

EPC Environmental Impact Rating: C

- PENCOEDTRE VILLAGE LOCATION
- FOUR BEDROOM DETACHED PROPERTY
- MODERN OPEN PLAN KITCHEN/DINER WITH SEPARATE UTILITY ROOM
- DOWNSTAIRS WC, FIRST FLOOR FAMILY BATHROOM PLUS AN EN-SUITE TO THE MASTER
- DOWNSTAIRS STUDY/HOME OFFICE
- AMPLE PARKING WITH A LARGE DRIVEWAY PLUS A DOUBLE GARAGE
- EPC C74





Entrance Hallway

Entrance into the entrance hallway via a front door with a decorative obscure glass panel. The entrance hallway has wood effect flooring, smooth walls and a textured coved ceiling. A carpeted staircase leads to the first floor. Doors lead off to the lounge, kitchen/diner, office and downstairs WC. There is also a door leading to a handy understairs storage cupboard and a radiator.

Lounge

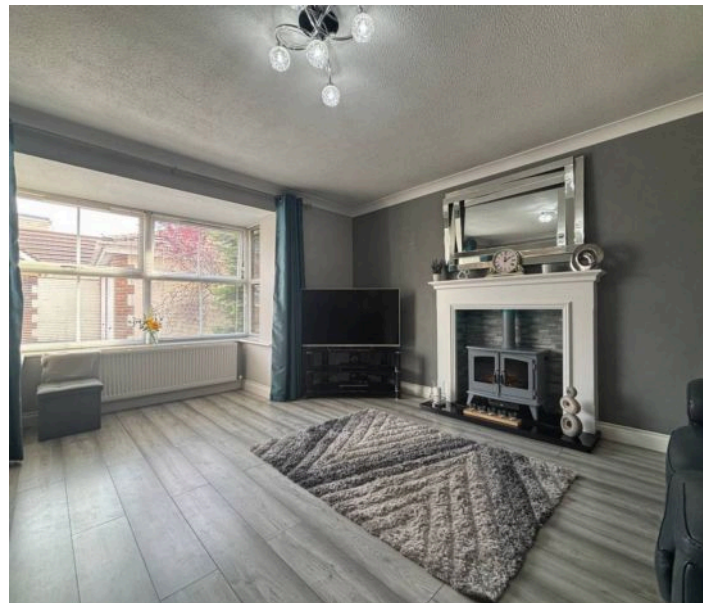
15' 11" x 14' 0" (4.85m x 4.27m)

A continuation of the wood effect flooring from the hallway, smooth walls and a textured coved ceiling. A front aspect bay window, a radiator and a feature electric fireplace with a wooden mantel. A door through into the kitchen/diner. Measurements have been taken into the bay.

Kitchen/Diner

27' 7" x 8' 10" (8.41m x 2.69m)

Tiled flooring, smooth walls and a smooth coved ceiling with spotlights. The dining area has ample space for a dining table and chairs, double opening French doors leading out into the garden and a modern vertical radiator. The kitchen has a range of modern high gloss white and grey eye and base level units with under counter lights and quartz worktops. There is a stainless steel one and a half bowl sink inset with a stainless steel mixer tap overtop. Integrated appliances include a stainless steel extractor hood, eye level microwave and a dishwasher. Space for a five ring cooker and American style fridge/freezer. Matching breakfast bar with space for two stools and an integrated wine fridge. Two rear aspect windows overlooking the garden. A door leading to the utility room.





Utility Room

6' 11" x 6' 1" (2.11m x 1.85m)

A continuation of the tiled flooring from the kitchen, smooth walls and a smooth ceiling. Eye and base level units/countertops matching the kitchen, space and plumbing for a washing machine and tumble dryer. Stainless steel sink with a stainless steel mixer tap ovetop. A wall mounted boiler, a radiator and a door giving access to the rear garden.

Office

6' 11" x 6' 3" (2.11m x 1.91m)

A continuation of the wood effect flooring from the hallway, smooth walls and a textured coved ceiling. A front aspect window and a radiator.

Downstairs WC

6' 11" x 3' 10" (2.11m x 1.17m)

A continuation of the wood effect flooring from the hallway, half height wall panelling, smooth walls and a textured coved ceiling. A two piece white suite comprising a close coupled WC and a white/grey gloss vanity unit. A side aspect opaque window and a radiator.

Landing

A carpeted staircase leads to a carpeted landing with smooth walls and a coved ceiling. Doors lead off to four bedrooms, a family bathroom and a storage cupboard. Access to the fully boarded loft via a drop down ladder.

Bedroom One

11' 1" x 10' 8" (3.38m x 3.25m)

Carpeted with smooth walls and a textured coved ceiling. A front aspect window, a radiator and fitted wardrobes. A door leading to the en-suite. Measurements exclude the depth of the fitted wardrobes.





En-suite

5' 11" x 4' 8" (1.80m x 1.42m)

Wood effect flooring, full height tiling to the walls and a smooth ceiling with spotlights. A three piece white suite comprising a corner WC with a push button flush, a vanity wash basin with a stainless steel mixer tap overtop and a walk-in shower cubicle with a stainless steel thermostatic rainfall shower and a glass sliding shower screen. A front aspect opaque window, a stainless steel towel radiator and an extractor fan.

Bedroom Two

13' 8" x 9' 10" (4.17m x 3.00m)

Wood effect flooring, smooth walls and a textured coved ceiling. A front aspect window and a radiator.

Bedroom Three

11' 1" x 9' 1" (3.38m x 2.77m)

Carpeted with smooth walls, a papered feature wall and a textured coved ceiling. A rear aspect window, a radiator and fitted wardrobes. Measurements exclude the depth of the fitted wardrobes.

Bedroom Four

9' 7" x 8' 8" (2.92m x 2.64m)

Carpeted with smooth walls and a textured coved ceiling. A rear aspect window and a radiator.



Family Bathroom

7' 3" x 5' 6" (2.21m x 1.68m)

Vinyl tile effect flooring, fully tiled walls and a textured coved ceiling. A three piece white suite comprising a WC with a push button flush, a vanity unit housing the wash basin with a stainless steel mixer tap overtop and a bath with a stainless steel mixer tap and an electric shower inset with a glass folding shower screen. A rear aspect opaque window, a towel radiator and an extractor fan.



GARDEN

A fully enclosed rear garden with well maintained wooden fencing. A wooden gate to the side giving access to the front of the property. Outside water tap. Lawn and patio area. Plenty of well established shrubbery. Timber built summer house/storage to remain.

DOUBLE GARAGE

2 Parking Spaces

A large double garage fully fitted with solid PVC floor tiles throughout, currently being used as a gym, providing parking for two vehicles.

DRIVEWAY

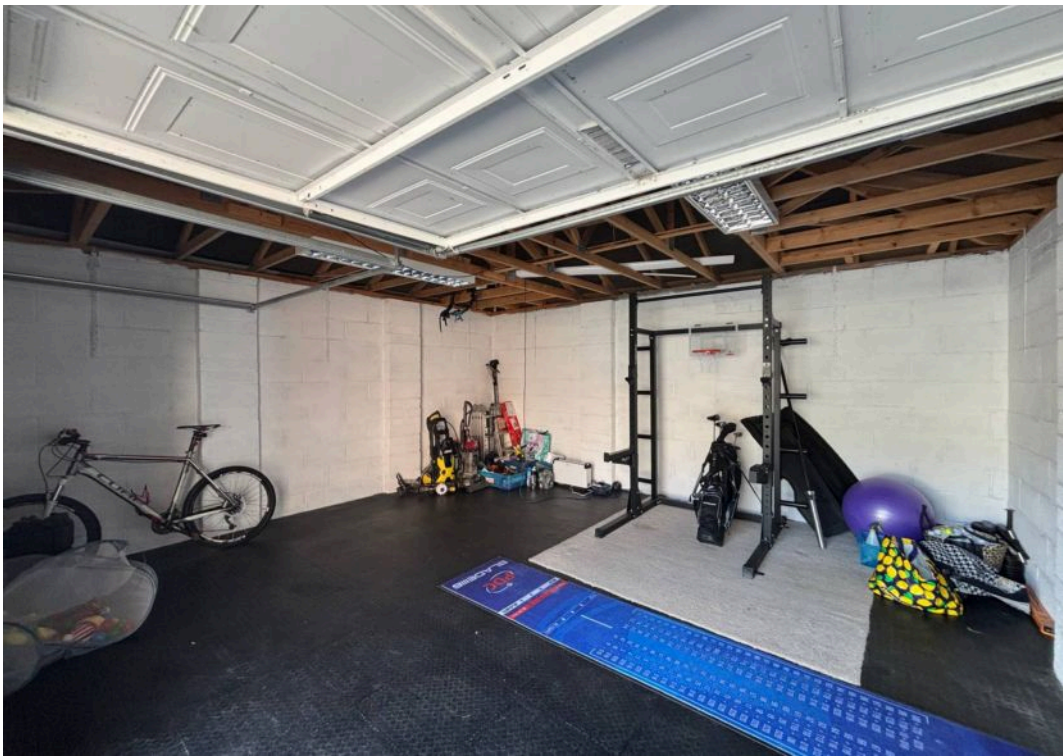
5 Parking Spaces

A large driveway providing parking for up to five vehicles.





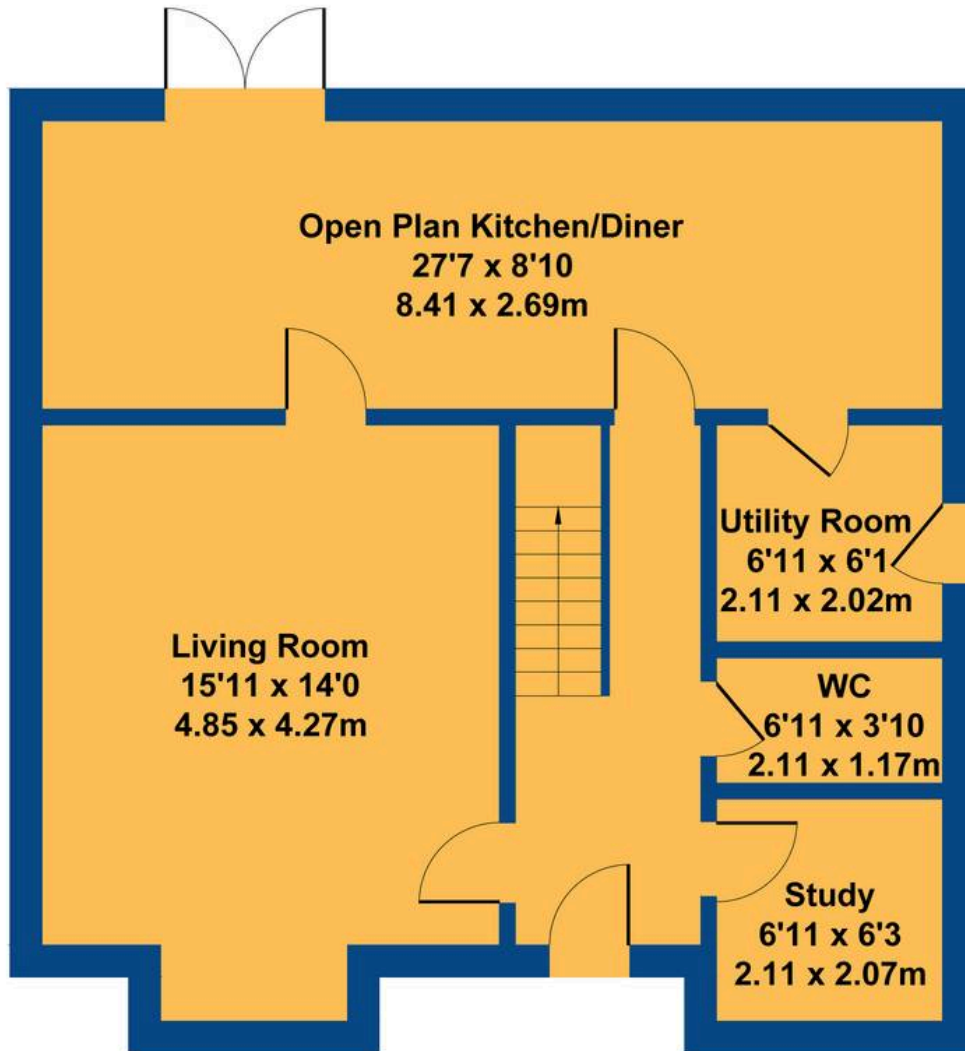




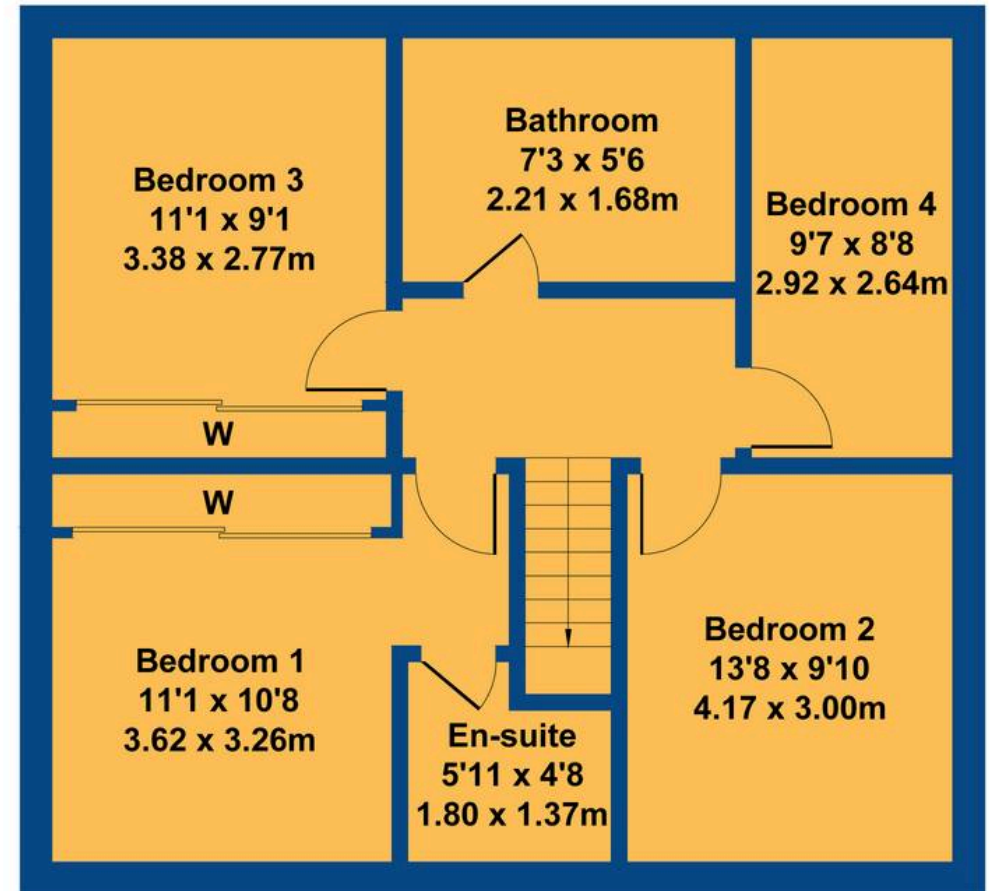


17 Dannog Y Coed

Approximate Gross Internal Area
1430 sq ft - 132 sq m




GROUND FLOOR




FIRST FLOOR

Not to Scale. Produced by The Plan Portal 2025
For Illustrative Purposes Only.

Energy Efficiency Rating

	Current	Potential
Very energy efficient - lower running costs		
(92+) A		
(81-91) B		87
(69-80) C	74	
(55-68) D		
(39-54) E		
(21-38) F		
(1-20) G		
Not energy efficient - higher running costs		
England, Scotland & Wales <small>EU Directive 2002/91/EC</small> 		

Environmental Impact (CO₂) Rating

	Current	Potential
Very environmentally friendly - lower CO ₂ emissions		
(92+) A		
(81-91) B		85
(69-80) C	71	
(55-68) D		
(39-54) E		
(21-38) F		
(1-20) G		
Not environmentally friendly - higher CO ₂ emissions		
England, Scotland & Wales <small>EU Directive 2002/91/EC</small> 		

Chris Davies Estate Agents

Chris Davies Estate Agents, 24 High Street – CF62 7EA

01446 700007

barry@chris-davies.co.uk

www.chris-davies.co.uk/

HELPFUL INFORMATION – whilst we try to ensure our sales particulars are complete, accurate and reliable, if there is any point which is particularly important, please ask and we will be happy to check it, including specific information in respect of commuting links, surroundings, noise, views, or condition. For security purposes, applicants who wish to view will need to provide their name, address and telephone number. All measurements are approximate to the widest and longest points. Buyers are advised to instruct a solicitor to obtain verification of tenure and a surveyor to check that appliances, installations and services are in satisfactory condition.