





48 Westward Rise

Barry, Barry

Attractive three bedroom terraced house located in Barry's garden suburb. Spacious lounge, kitchen/diner, upstairs shower room. Generous rear garden with patio. Close to schools, transport links and local amenities. Ideal family home.

Council Tax band: D

Tenure: Freehold

EPC Energy Efficiency Rating: C

EPC Environmental Impact Rating:

- LOCATED ON THE POPULAR GARDEN SUBURB AREA OF BARRY
- THREE BEDROOMS AND AN UPSTAIRS SHOWER ROOM
- SPACIOUS LOUNGE AND KITCHEN/DINER
- GENEROUS REAR GARDEN
- DRIVEWAY PROVIDING PARKING FOR ONE VEHICLE
- EXCELLENT TRANSPORT LINKS AND CLOSE TO LOCAL AMENITIES
- POPULAR SCHOOL CATCHMENT AREA (WHITMORE HIGH SCHOOL AND YSGOL GYMRAEG BRO MORGANNWG)
- EPC C69





Hallway

Entrance via double opening uPVC doors with opaque glazing into a porch. The porch has vinyl wood effect flooring, textured walls and a wood panelled ceiling. A further wooden door with opaque glazing leads into a small carpeted hallway with wallpapered walls. A carpeted staircase leads to the first floor and a door leads through into the lounge.

Lounge

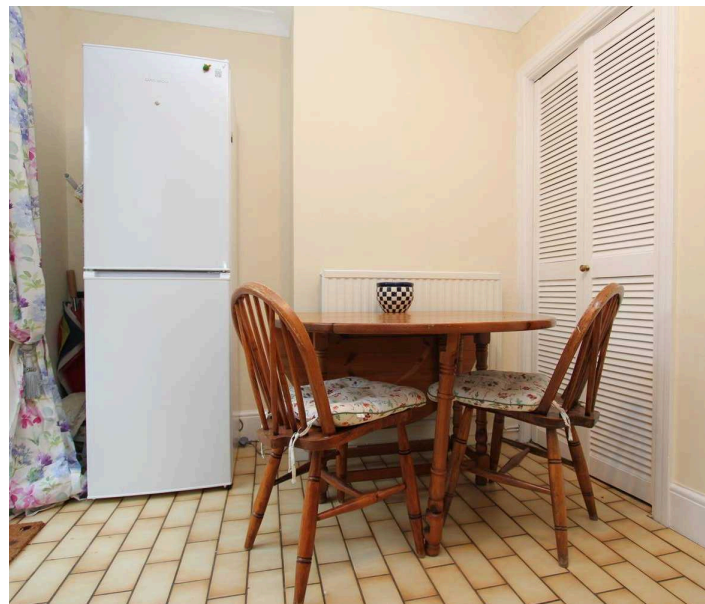
12' 5" x 12' 5" (3.78m x 3.78m)

Carpeted, wallpapered walls with picture rails and a textured ceiling. A large front aspect window, a radiator and a working fireplace with a wooden mantelpiece. A door leads through to the kitchen/diner. Measurements exclude the depth of the alcoves either side of the chimney breast.

Kitchen/Diner

17' 0" x 7' 9" (5.18m x 2.36m)

Tiled flooring, textured walls and a textured coved ceiling. Wooden base level units, complementing laminate wood effect worktops with a stainless steel sink inset and a stainless steel mixer tap overtop. Space and plumbing for a washing machine. Space for a freestanding oven and fridge/freezer. A large rear aspect window and double opening French doors leading out into the garden. Double opening slatted doors offer access to understairs storage. Ample space for a dining table and chairs and a radiator.





Landing

A carpeted staircase leads to a carpeted landing with wallpapered walls and a textured ceiling. Doors lead to three bedrooms and a shower room. Loft access.

Bedroom One

12' 6" x 11' 2" (3.81m x 3.40m)

Carpeted, textured walls with picture rails and a textured ceiling. A front aspect window, radiator and feature period fireplace.

Bedroom Two

12' 9" x 7' 11" (3.89m x 2.41m)

Carpeted, wallpapered walls with picture rails and a textured ceiling. A rear aspect window, radiator and period feature fireplace.

Bedroom Three

9' 4" x 7' 3" (2.84m x 2.21m)

Carpeted, wallpapered walls with picture rails and a textured ceiling. A front aspect window, radiator and small storage cupboard providing storage into the eaves.

Shower Room

7' 10" x 4' 3" (2.39m x 1.30m)

Vinyl wood effect flooring, half height white wall tiling with full height within the shower cubicle. The remainder of the walls and ceiling are smooth. A three piece white suite comprising a WC with a push button flush, a pedestal wash basin with stainless steel pillar taps and a shower cubicle with a stainless steel thermostatic shower inset and a glass sliding shower screen. Previously fitted with a bath which could be reinstated if the shower is removed. A rear aspect window and a radiator. Measurements exclude the alcove where the WC is located.





REAR GARDEN

A generous rear garden with a well appointed patio area perfect for alfresco dining and a pathway leading to the rear of the garden. The garden is mainly laid to lawn with plenty of well established shrubbery and trees. There is a lockable side access gate and a lockable gate to the rear of the garden.

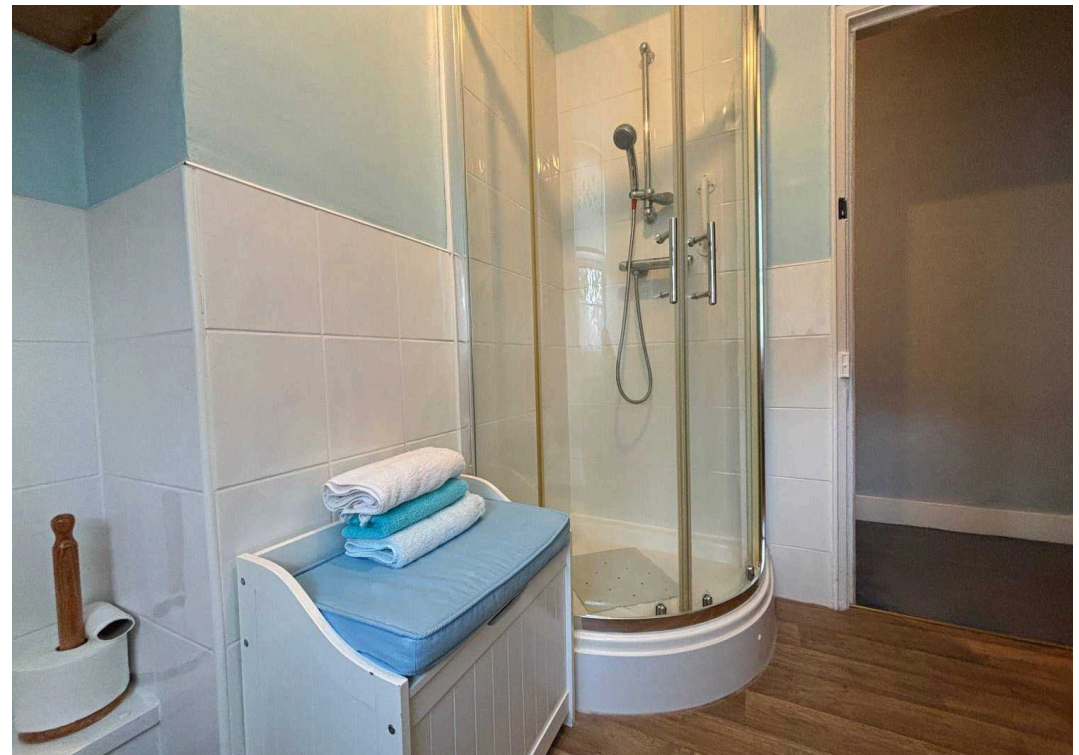
DRIVEWAY

1 Parking Space


Driveway providing off road parking for one vehicle. Ample on-street parking also available.







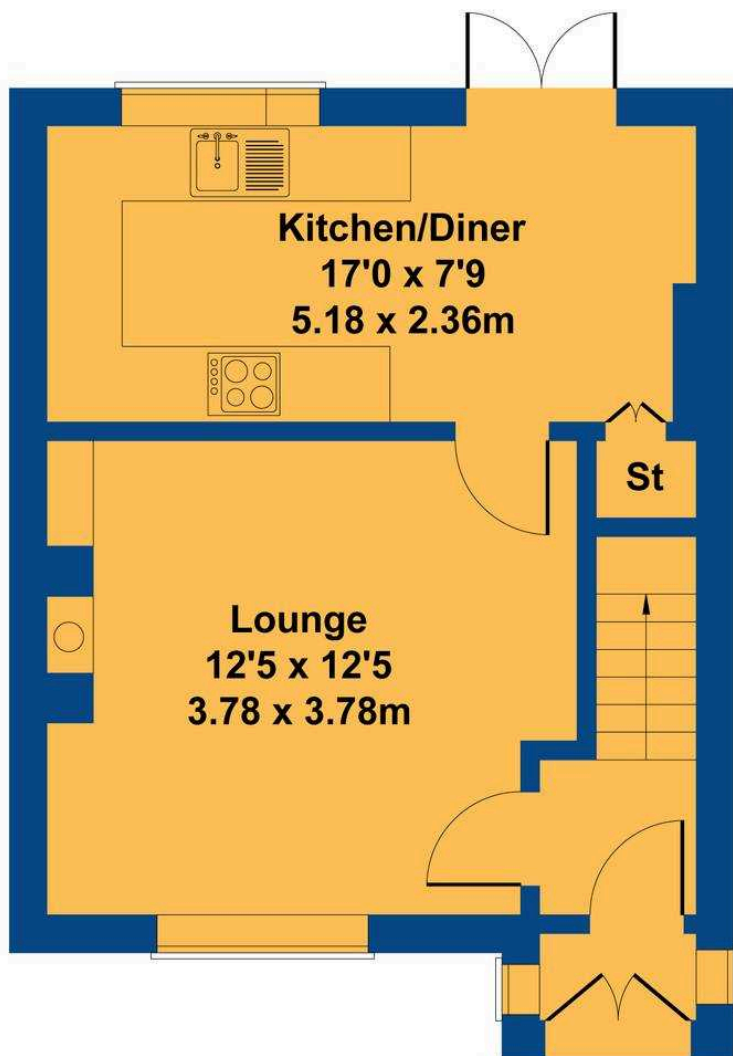
Energy Efficiency Rating

	Current	Potential
Very energy efficient - lower running costs		
(92+) A		
(81-91) B		83
(69-80) C	69	
(55-68) D		
(39-54) E		
(21-38) F		
(1-20) G		
Not energy efficient - higher running costs		
England, Scotland & Wales	EU Directive 2002/91/EC 	

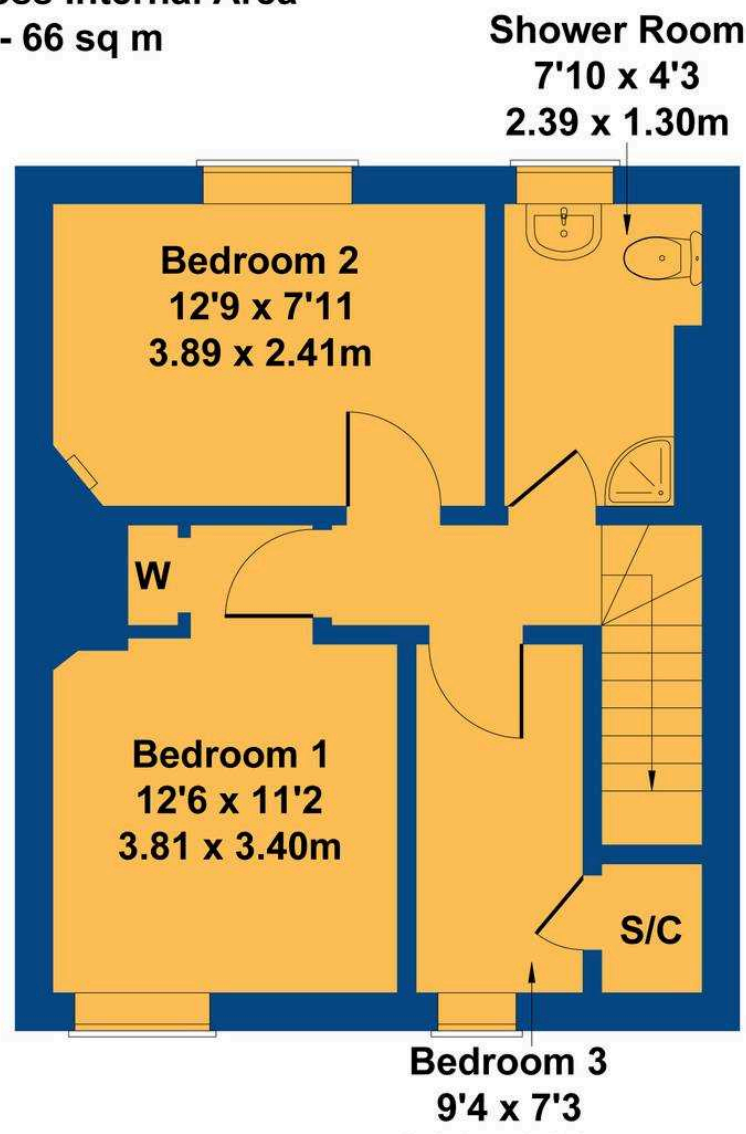
48 Westward Rise

Approximate Gross Internal Area

710 sq ft - 66 sq m



GROUND FLOOR



FIRST FLOOR

Shower Room

7'10 x 4'3

2.39 x 1.30m

Bedroom 2

12'9 x 7'11

3.89 x 2.41m

Bedroom 1

12'6 x 11'2

3.81 x 3.40m

Bedroom 3

9'4 x 7'3

2.84 x 1.30m

Not to Scale. Produced by The Plan Portal 2024

For Illustrative Purposes Only.



Chris Davies Estate Agents

Chris Davies Estate Agents, 24 High Street - CF62 7EA

01446 700007

barry@chris-davies.co.uk

www.chris-davies.co.uk/

HELPFUL INFORMATION - whilst we try to ensure our sales particulars are complete, accurate and reliable, if there is any point which is particularly important, please ask and we will be happy to check it, including specific information in respect of commuting links, surroundings, noise, views, or condition. For security purposes, applicants who wish to view will need to provide their name, address and telephone number. All measurements are approximate to the widest and longest points. Buyers are advised to instruct a solicitor to obtain verification of tenure and a surveyor to check that appliances, installations and services are in satisfactory condition.