

21 Wynd Street

Barry, Barry

3 double bedrooms, no onward chain. Garage.

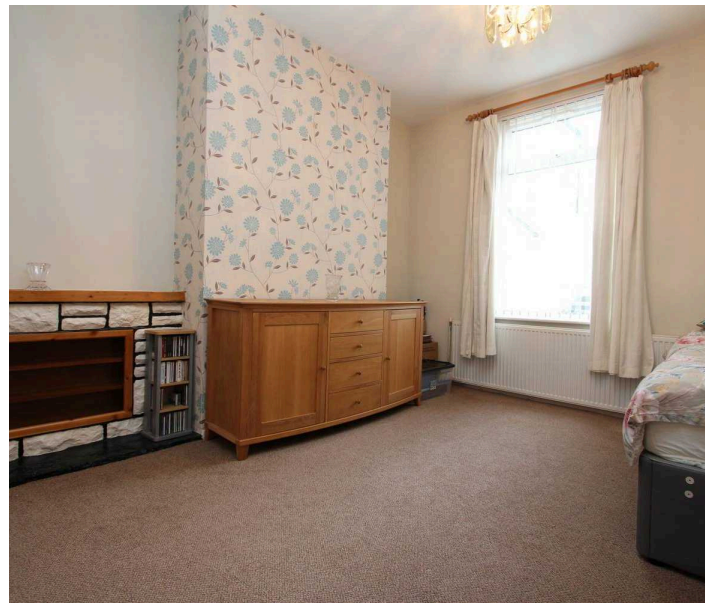
Council Tax band: TBD

Tenure: Freehold

EPC Energy Efficiency Rating: D

EPC Environmental Impact Rating: E

- NO ONWARD CHAIN
- GARAGE PLUS ON STREET PARKING
- TWO RECEPTIONS ROOMS PLUS KITCHEN AND UTILITY
- THREE DOUBLE BEDROOMS
- NEW ROOF FITTED IN THE LAST 4 YEARS
- EPC D59





Porch

Accessed via composite front door. Carpeted and with further inner door to hallway.

Hallway

Carpeted central hall with stairs to first floor and access to lounge and dining room. Radiator. Alarm panel and fuse box. Period coving.

Lounge

25' 4" x 11' 5" (7.72m x 3.48m)

A spacious carpeted lounge with rear and front aspect windows. Two radiators. Fireplace.

Dining Room

12' 0" x 10' 6" (3.66m x 3.20m)

Measurements exclude alcoves. Carpeted second reception room with front aspect window and radiator. Recessed storage. Partial glazed door to kitchen.

Kitchen

11' 11" x 10' 5" (3.63m x 3.20m)

A range of fitted eye level and base units with work surfaces and inset sink unit. Space for appliances and hob as required. Side and rear aspect windows. Vinyl flooring. Worcester boiler. Open access to under stair storage cupboard. Glazed door to rear utility / lobby.



Utility/ Lobby

Carpeted and with double glazed opaque windows plus door to rear garden. Plumbing for washing machine.

Landing

Carpeted, matching the stairs. Loft hatch with pull down ladder. Doors give access to three bedrooms and bathroom. Rear aspect window.

Bedroom One

14' 2" x 12' 0" (4.32m x 3.66m)

Carpeted double bedroom with two front aspect windows and rear aspect window, letting in plenty of natural light. Radiator and a range of fitted bedroom furniture.



Carpeted double bedroom with two front aspect windows and rear aspect window, letting in plenty of natural light. Radiator and a range of fitted bedroom furniture.

Bedroom Two

11' 8" x 9' 6" (3.56m x 2.90m)

Carpeted double bedroom with rear aspect window and radiator.

Bedroom Three

12' 7" x 8' 9" (3.84m x 2.67m)

Carpeted double bedroom with front aspect window and radiator.

Bathroom

9' 6" x 5' 5" (2.90m x 1.65m)

Suite comprising panelled bath with electric shower and folding shower screen, pedestal wash basin and low level WC. Radiator. Opaque window.

Garage

15' 1" x 10' 9" (4.60m x 3.28m)

With up and over door. Water tap.





FRONT GARDEN

Enclosed forecourt of low maintenance.

REAR GARDEN

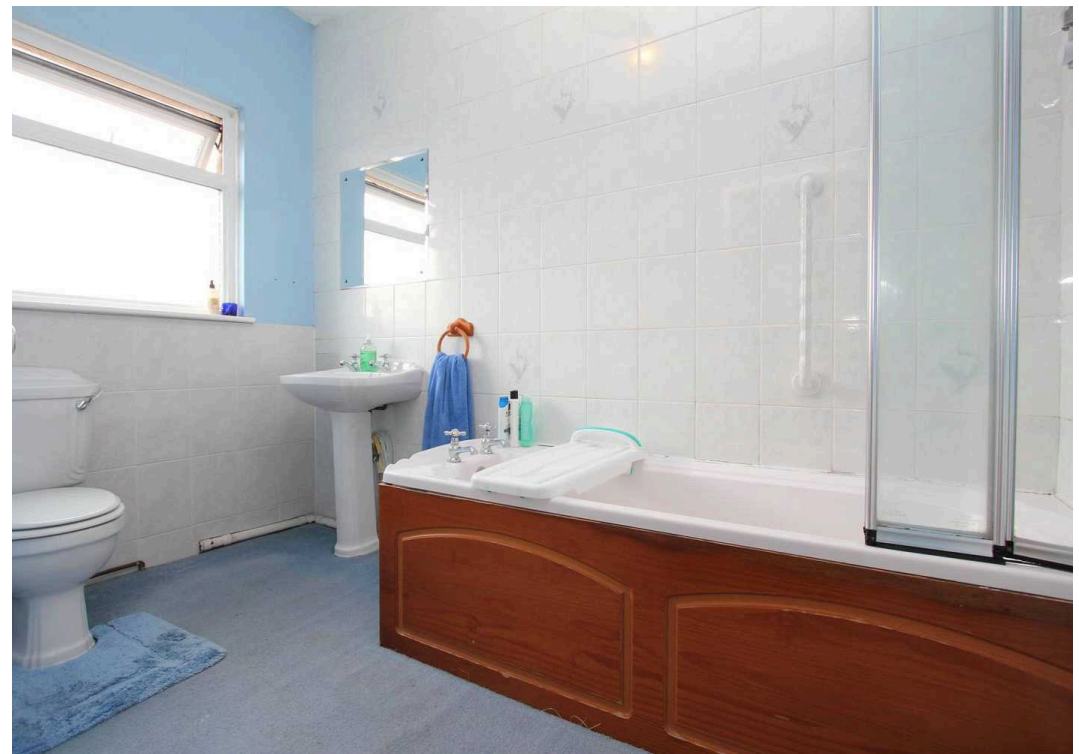
The rear and side garden are of low maintenance paving and chippings. Gate to side (lane). Access to shed and garage.





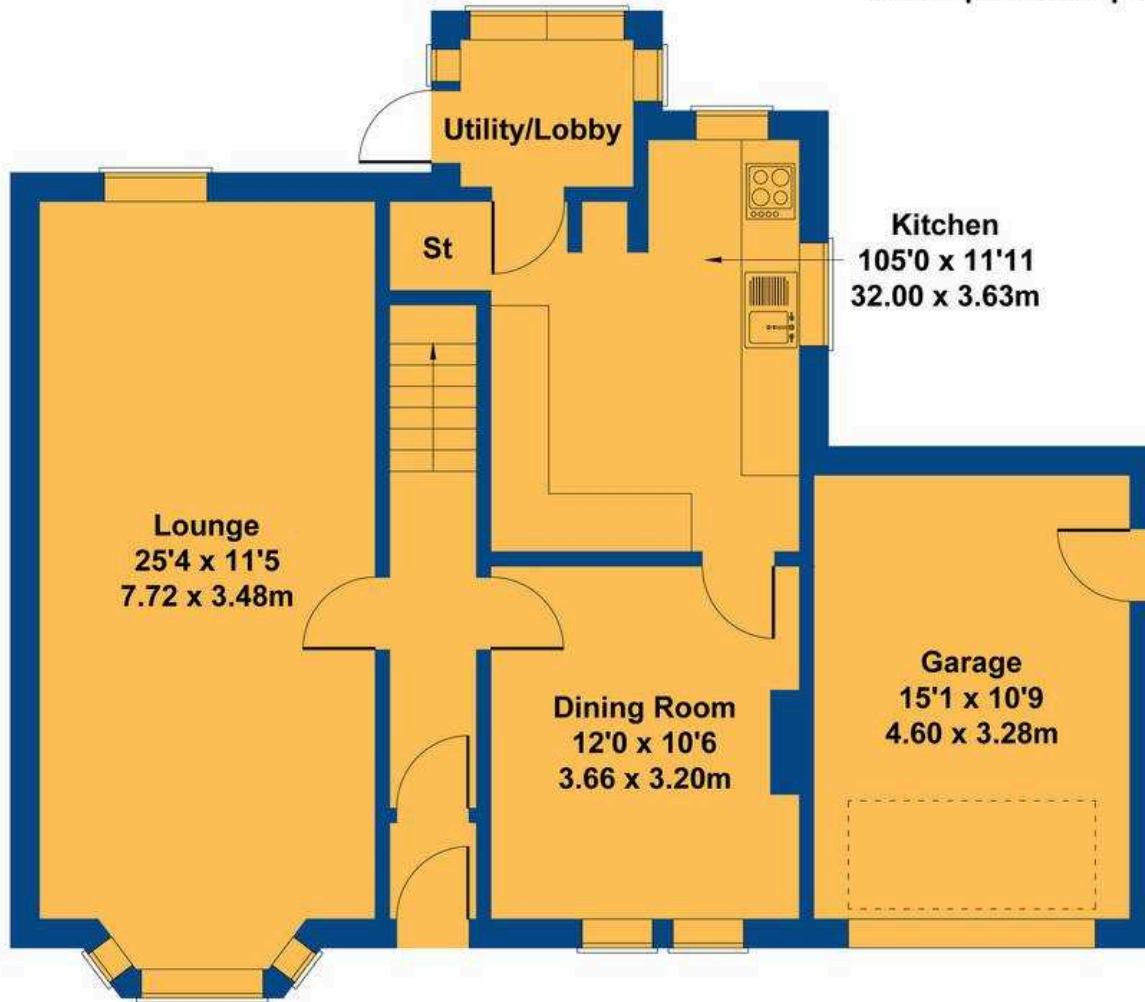
Energy Efficiency Rating		Current	Potential
<i>Very energy efficient - lower running costs</i>			
(92+)	A		83
(81-91)	B		
(69-80)	C		
(55-68)	D	59	
(39-54)	E		
(21-38)	F		
(1-20)	G		
<i>Not energy efficient - higher running costs</i>			
England, Scotland & Wales		EU Directive 2002/91/EC	

Environmental Impact (CO ₂) Rating		Current	Potential
<i>Very environmentally friendly - lower CO₂ emissions</i>			
(92+)	A		76
(81-91)	B		
(69-80)	C		
(55-68)	D		
(39-54)	E	45	
(21-38)	F		
(1-20)	G		
<i>Not environmentally friendly - higher CO₂ emissions</i>			
England, Scotland & Wales		EU Directive 2002/91/EC	



21 Wynd Street

Approximate Gross Internal Area
1421 sq ft - 132 sq m



GROUND FLOOR



FIRST FLOOR

Not to Scale. Produced by The Plan Portal 2024
For Illustrative Purposes Only.



Chris Davies Estate Agents

Chris Davies Estate Agents, 24 High Street - CF62 7EA

01446 700007

barry@chris-davies.co.uk

www.chris-davies.co.uk/

HELPFUL INFORMATION - whilst we try to ensure our sales particulars are complete, accurate and reliable, if there is any point which is particularly important, please ask and we will be happy to check it, including specific information in respect of commuting links, surroundings, noise, views, or condition. For security purposes, applicants who wish to view will need to provide their name, address and telephone number. All measurements are approximate to the widest and longest points. Buyers are advised to instruct a solicitor to obtain verification of tenure and a surveyor to check that appliances, installations and services are in satisfactory condition.