





170 Court Road

Barry, Barry

This mid-terraced property features three spacious bedrooms and a separate lounge, dining room and kitchen. Large enclosed rear garden. Energy-efficient with EPC C77. Convenient location near amenities & transport links.

Council Tax band: D

Tenure: Freehold

EPC Energy Efficiency Rating: C

EPC Environmental Impact Rating:

- SEPARATE LOUNGE, DINING ROOM AND KITCHEN
- MODERN KITCHEN AND BATHROOM
- LARGE FULLY ENCLOSED REAR GARDEN
- EPC C71
- EXCELLENT TRANSPORT LINKS





Hallway

Entrance into a porch via a uPVC front door with a semi-circular opaque glazed panel, the porch has matching opaque windows to the front and sides. There is then a further uPVC fully glazed sliding door before stepping into the hallway. The hallway has laminate wood effect flooring, smooth walls and a smooth ceiling. A staircase leads to the first floor, doors lead off to the lounge and kitchen. Plenty of understairs storage plus a radiator.

Lounge

13' 8" x 12' 1" (4.17m x 3.68m)

A continuation of the laminate wood effect flooring, smooth walls and a smooth coved ceiling. A large front aspect window, a radiator and a feature fireplace.

Kitchen

14' 1" x 9' 3" (4.29m x 2.82m)

Tiled wood effect flooring, smooth walls and a smooth ceiling. Grey high gloss eye and base level units, with integrated appliances including a fridge/freezer, four ring hob and cooker hood, eye level double oven and washing machine. A modern sink unit and beautifully complementing worktops with a matching splashback. A modern vertical radiator, a uPVC door with opaque glazing leading to the garden and a large rear aspect window.

Dining Room

13' 6" x 8' 9" (4.11m x 2.67m)

Carpeted with smooth walls and a smooth ceiling. A large rear aspect window, a radiator and a breakfast bar (looking through into the kitchen). Ample space for a dining table and chairs. Measurements exclude the depth of the alcoves either side of the chimney breast.

Landing

A wooden staircase leads up to the first floor landing. Wooden flooring, smooth walls and a smooth ceiling. Doors leading off to three bedrooms, the bathroom and a storage cupboard. Loft access.





A wooden staircase leads up to the first floor landing. Wooden flooring, smooth walls and a smooth ceiling. Doors leading off to three bedrooms, the bathroom and a storage cupboard. Loft access.

Bedroom One

14' 0" x 10' 2" (4.27m x 3.10m)

Carpeted with smooth walls and a smooth ceiling. A large rear aspect window, radiator and storage cupboard.

Bedroom Two

13' 9" x 10' 4" (4.19m x 3.15m)

Carpeted with smooth walls and a smooth ceiling. A large front aspect window, a radiator and a built in double wardrobe.

Bedroom Three

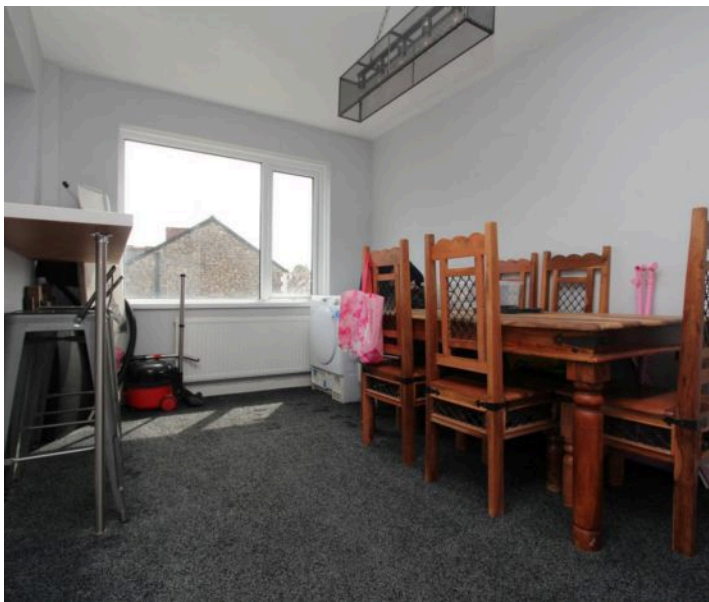
7' 10" x 7' 6" (2.39m x 2.29m)

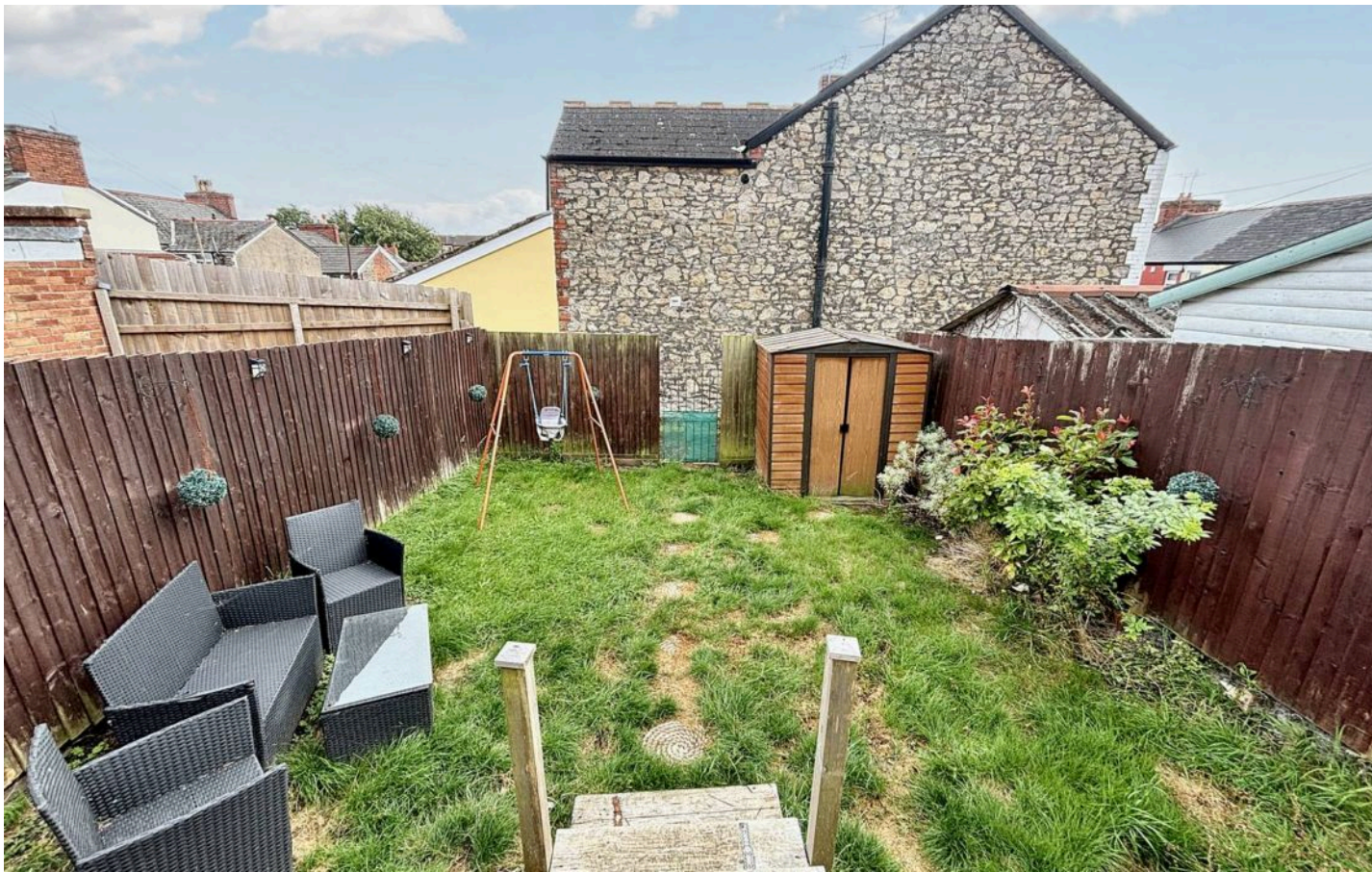
Grey laminate wood effect flooring with smooth walls and a smooth ceiling. A front aspect window, a radiator and a storage cupboard.

Bathroom

7' 11" x 5' 5" (2.41m x 1.65m)

Fully tiled walls/floor and a smooth ceiling. A three piece white suite comprising a WC with a push button flush, a vanity sink basin with a stainless steel mixer tap and a bath with a stainless steel mixer tap, thermostatic stainless steel shower with a rainfall shower head and a glass shower screen. A towel radiator, an opaque rear aspect window and a storage cupboard.





FRONT GARDEN

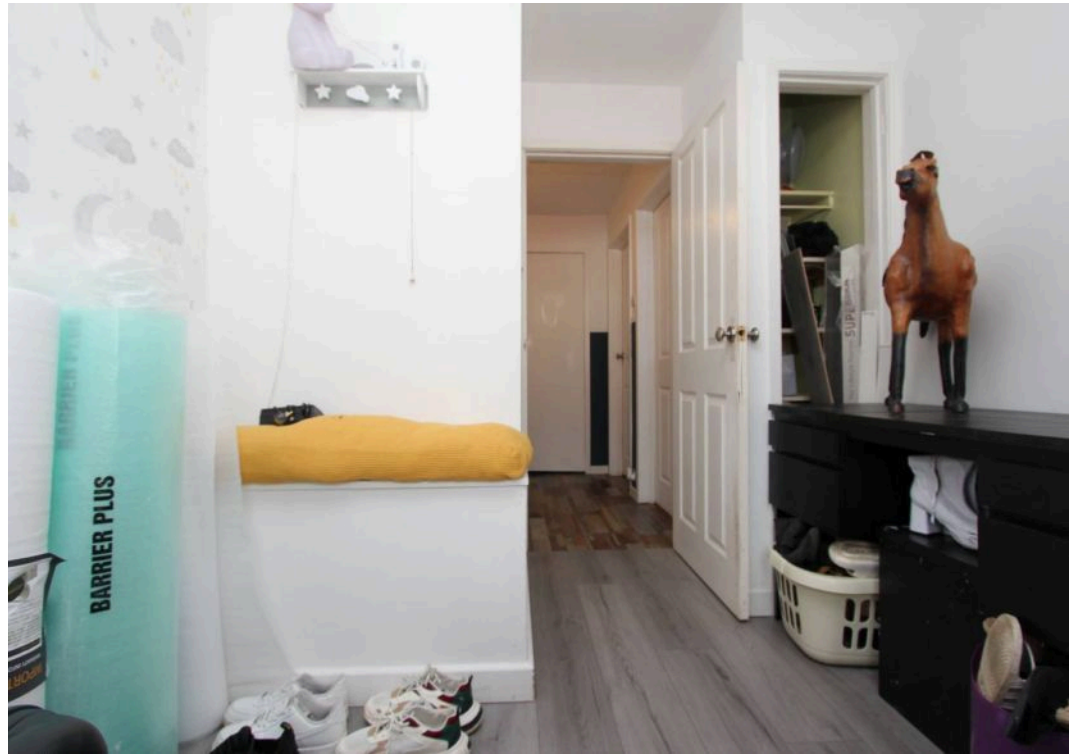
A fully enclosed front garden with a gated pathway leading to the front door. To the right is an area of decorative stone chippings.

REAR GARDEN

A large rear garden fully enclosed by well maintained fencing. Steps lead down onto a large area of decking, sectioned off by flower beds and a gate. Further steps then lead down to an area of lawn. There is a gate at the rear leading to the back lane.

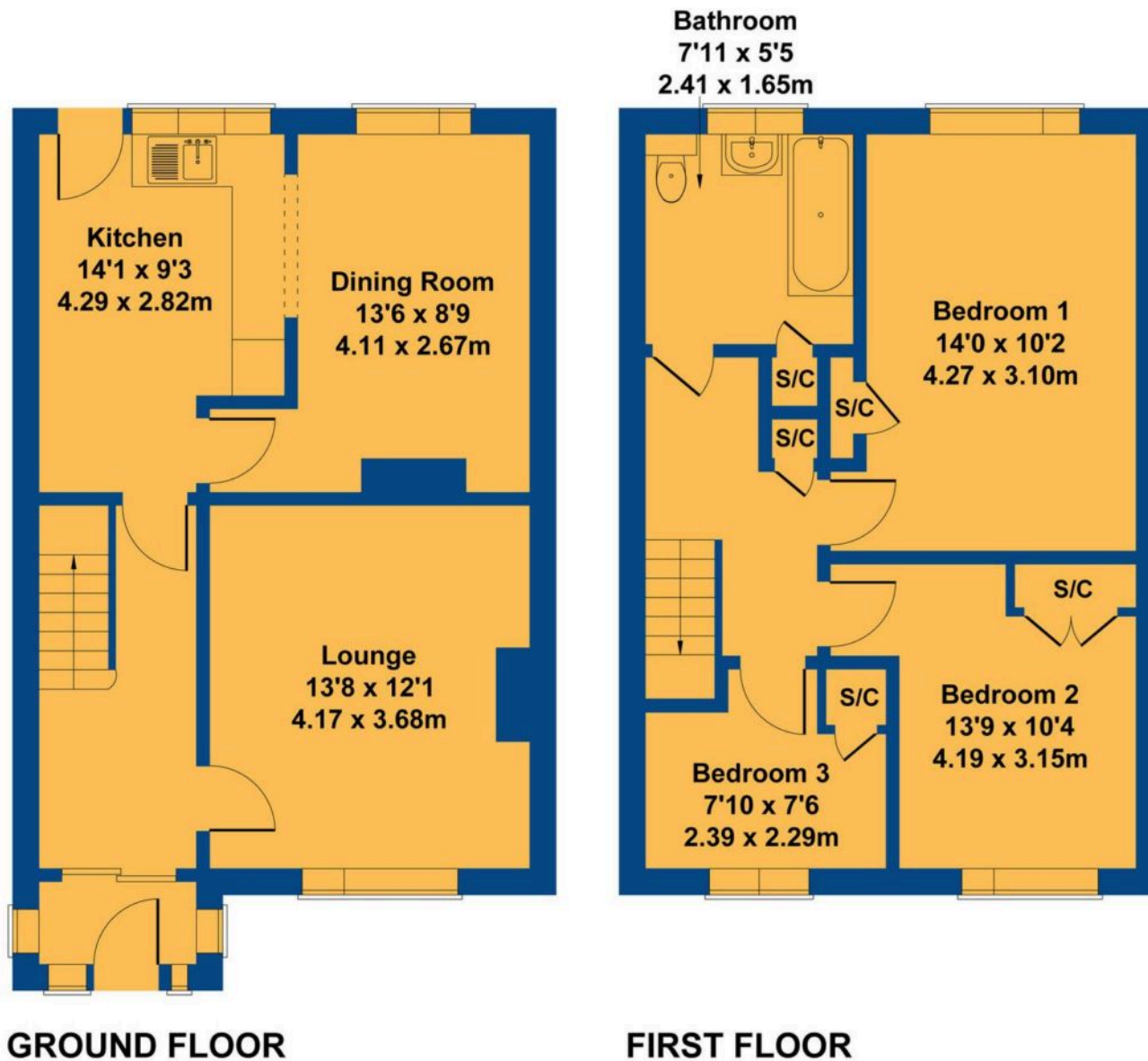
ON STREET





170 Court Road

Approximate Gross Internal Area
1044 sq ft - 97 sq m



Not to Scale. Produced by The Plan Portal 2024
For Illustrative Purposes Only.



Chris Davies Estate Agents

Chris Davies Estate Agents, 24 High Street – CF62 7EA

01446 700007

barry@chris-davies.co.uk

www.chris-davies.co.uk/

HELPFUL INFORMATION – whilst we try to ensure our sales particulars are complete, accurate and reliable, if there is any point which is particularly important, please ask and we will be happy to check it, including specific information in respect of commuting links, surroundings, noise, views, or condition. For security purposes, applicants who wish to view will need to provide their name, address and telephone number. All measurements are approximate to the widest and longest points. Buyers are advised to instruct a solicitor to obtain verification of tenure and a surveyor to check that appliances, installations and services are in satisfactory condition.