





18 Oxford Street

Barry, Barry

NO CHAIN; WEST END OF BARRY - DOUBLE BAY FRONTED THREE BED - This well presented family home is located within the sought after West End allowing quic...

Council Tax band: D

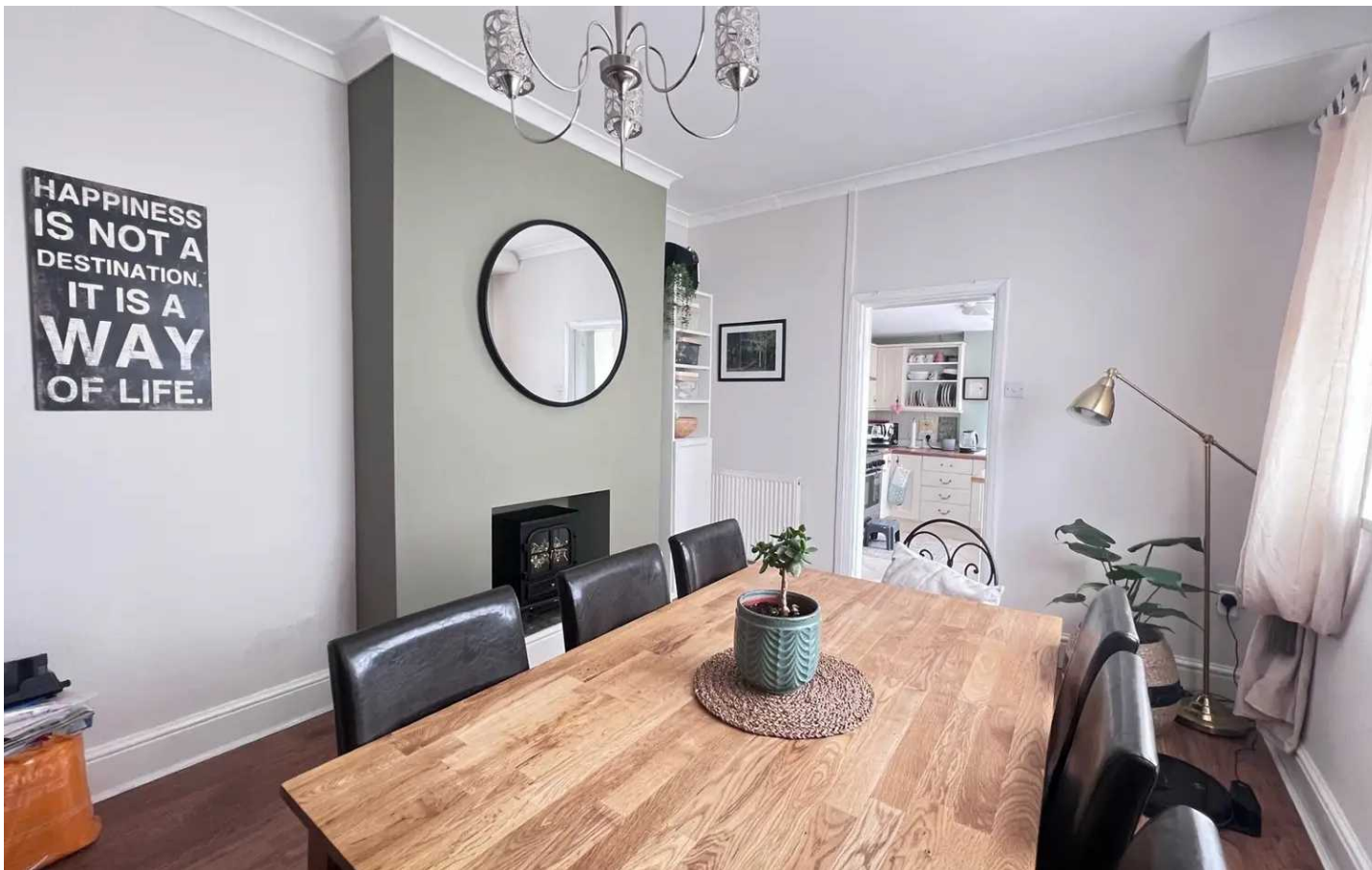
Tenure: Freehold

EPC Energy Efficiency Rating: D

EPC Environmental Impact Rating:

- GCH; UPVC DG ; NO CHAIN
- FF BATHROOM; MODERN KITCHEN
- THREE RECEPTIONS
- THREE DOUBLE BEDROOMS
- PERIOD TERRACE; WEST END
- SOUTHERLY GARDEN
- EPC D60





Entrance Hall

Accessed via uPVC front door. With an initial tiled area the rest is laid to laminate with carpeted stairs leading to the first floor. Doors to lounge, sitting room and dining room plus under stair storage cupboard. Radiator.

Lounge

Dimensions: 13' 10" x 12' 7" (4.21m x 3.83m) into bay. Bay fronted lounge with laminate flooring. Fire surround and radiator.

Sitting Room

Dimensions: 11' 8" x 10' 5" (3.55m x 3.17m). Continuation of the laminate floor. Rear aspect window. Fire place. Radiator.

Dining Room

Dimensions: 16' 0" x 10' 4" (4.87m x 3.15m). Continuation of laminate floor. Side aspect window. Radiator x 2. Open to kitchen.

Kitchen

Dimensions: 10' 9" x 10' 0" (3.27m x 3.05m). A range of fitted modern eye level and base units with complementing work surfaces over plus ceramic one and a half bowl sink unit. Wall mounted boiler. Space and plumbing for appliances. 6 ring gas hob Range with oven under. Side and rear aspect windows plus door to garden.

Landing

Carpeted split level landing with loft access. Internal doors to two bedrooms plus space saving folding doors to bathroom and bedroom three.

Bathroom

Dimensions: 7' 2" x 4' 10" (2.18m x 1.47m). Suite comprising bath with shower attachment off mixer, low level WC with button flush and matching pedestal wash basin. Fully tiled walls. Vinyl floor. Inset ceiling lights. Opaque window. Radiator.





Bedroom One

Dimensions: 16' 3" x 14' 10" (4.95m x 4.52m) into bay. Carpeted double bedroom with two front aspect windows (one bay). Radiator.

Bedroom Two

Dimensions: 10' 10" x 10' 6" (3.30m x 3.20m). Carpeted double bedroom with rear aspect window. Radiator.

Bedroom Three

Dimensions: 10' 8" x 10' 5" (3.25m x 3.17m). Carpeted double bedroom with rear aspect window. Radiator.

Front

Small forecourt front enclosed by wall and gate.

Rear

A Southerly aspect, enclosed garden mainly laid to paving slabs with borders and shrubs. Gate to rear lane.



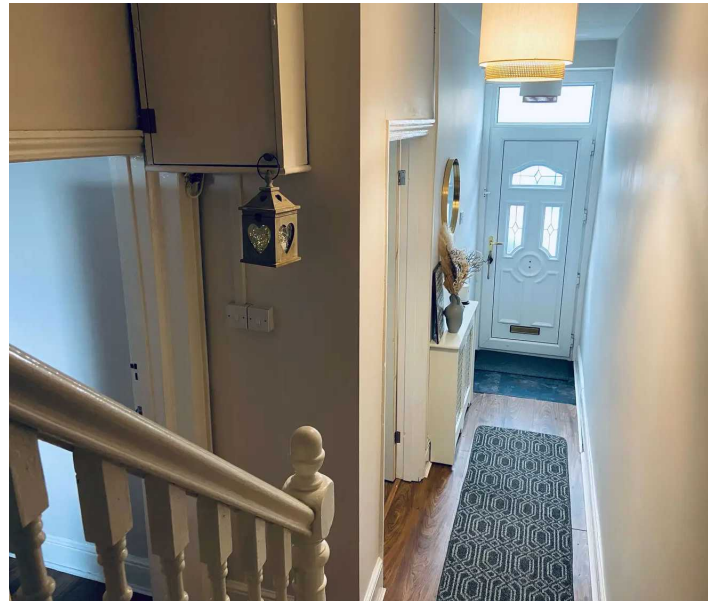
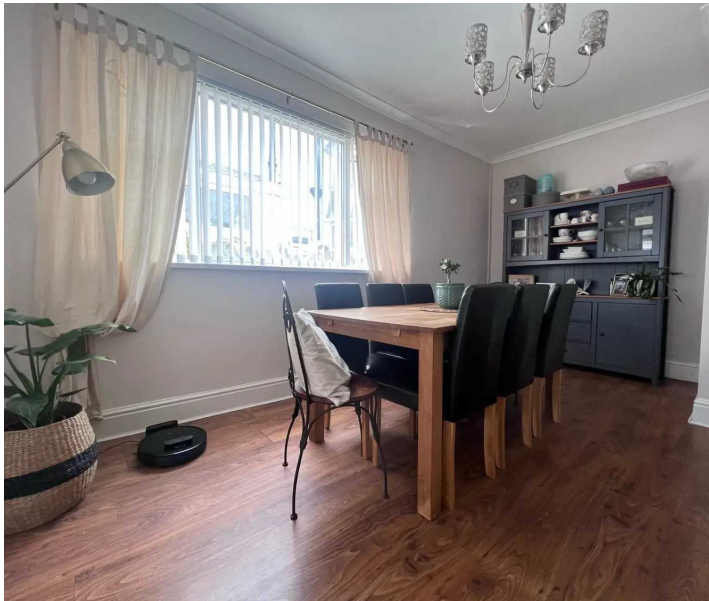


GARDEN

Small forecourt front enclosed by wall and gate.

REAR GARDEN

A Southerly aspect, enclosed garden mainly laid to paving slabs with borders and shrubs. Gate to rear lane.





18 Oxford Street

Approximate Gross Internal Area
1281 sq ft - 119 sq m



GROUND FLOOR

FIRST FLOOR

Not to Scale. Produced by The Plan Portal 2023
For Illustrative Purposes Only.





Chris Davies Estate Agents

Chris Davies Estate Agents, 24 High Street - CF62 7EA

01446 700007

barry@chris-davies.co.uk

www.chris-davies.co.uk/

HELPFUL INFORMATION - whilst we try to ensure our sales particulars are complete, accurate and reliable, if there is any point which is particularly important, please ask and we will be happy to check it, including specific information in respect of commuting links, surroundings, noise, views, or condition. For security purposes, applicants who wish to view will need to provide their name, address and telephone number. All measurements are approximate to the widest and longest points. Buyers are advised to instruct a solicitor to obtain verification of tenure and a surveyor to check that appliances, installations and services are in satisfactory condition.