

Heddfa The Drangway, Llantwit Major
£649,950



Heddfa The Drangway

Llantwit Major, Llantwit Major

Superb four double bedroom detached dormer bungalow offering flexible living space, with an impressive garden room, located in a quiet tucked away position. Heddfa with its sought after location, is within walking distance of local shops, schools, amenities, and Heritage coastline with its stunning beaches. The property comprises entrance porch, entrance hallway, sitting room, bedroom 1, family bathroom, kitchen, breakfast room, dining room/bedroom 4, and utility room. To the first floor are two further double bedrooms each with their own en-suite shower rooms. Outside separate from the house there is the garden room with WC and store room, offering an excellent area to sit and enjoy the sunny garden (with potential to be used as an annex subject to planning, or as an office for example). Gardens to the front rear and side are all well maintained with pergola, mature shrubs, and trees, summerhouse and workshop. The detached double garage and excellent driveway offer exceptional off road parking. The property enjoys gas central heating with a combination boiler, cavity wall insulation, and UPVC windows and doors, with French doors where indicated. Such a property is rarely available, and viewings are highly recommended to fully appreciate the high standard of presentation throughout, living space and mature location. Tenure: Freehold EPC Energy Efficiency Rating: D



- DETACHED DORMER BUNGALOW.
- 4 BEDROOMS. 2 EN-SUITES. EPC D60.



Heddfa The Drangway

Llantwit Major, Llantwit Major

- DETACHED DORMER BUNGALOW.
- 4 BEDROOMS. 2 EN-SUITES. EPC D60.
- UPVC. GCH COMBI. SUMMERHOUSE.
- DOUBLE GARAGE. DRIVEWAY.
- RARELY AVAILABLE.
- GARDEN ROOM. UTILITY.





GROUND FLOOR

Entrance Porch

UPVC opaque glazed front entrance door. UPVC window to side. Vinyl floor covering. Storage cupboard. UPVC glazed door to entrance hallway, with UPVC glazed side panels.

Entrance Hallway

Radiators. Stairs to first floor. Doors to sitting room, Bedroom 1, family bathroom, kitchen, breakfast room and dining room/bedroom 4. Radiator. Airing cupboard with storage and wall mounted Worcester combination boiler providing the central heating and hot water. Storage cupboard.

Sitting Room

Dimensions: 15' 5" x 19' 5" (4.70m x 5.91m). UPVC bay window to front. Radiators. Marble fireplace with electric pebble effect fire.

Bedroom 1

Dimensions: 12' 0" x 13' 2" (3.65m x 4.01m). UPVC window to front. Radiator. Built in wardrobe.

Dining Room/Bedroom 4

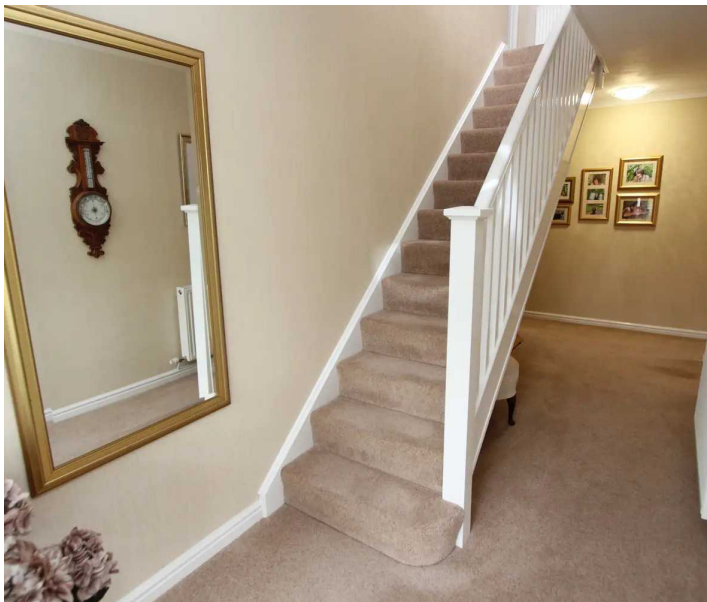
Dimensions: 10' 1" x 11' 5" (3.07m x 3.48m). UPVC window to side. Radiator. Storage cupboard.

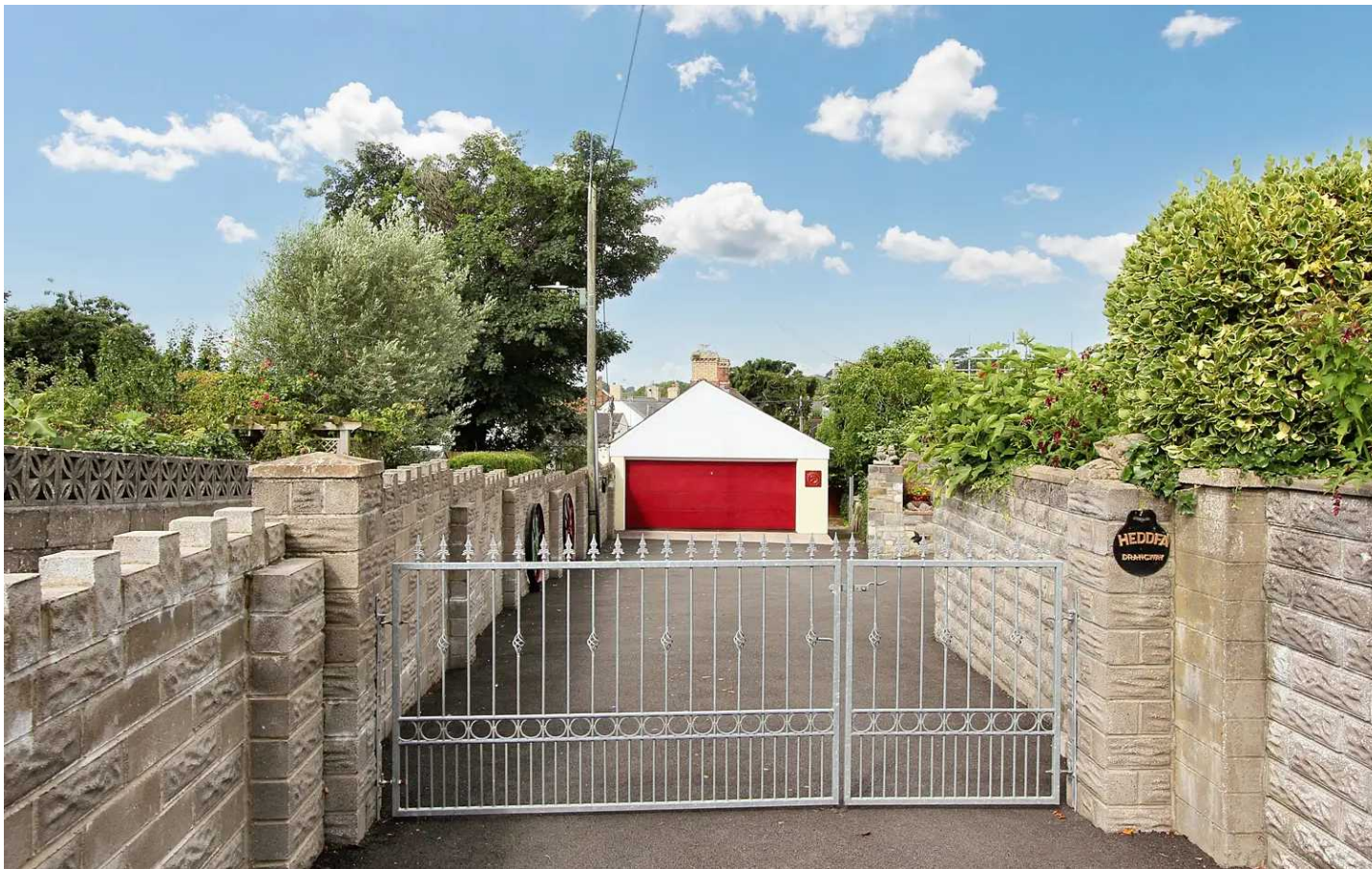
Family Bathroom

Dimensions: 8' 7" x 9' 5" (2.61m x 2.87m). UPVC opaque window to side. Low level WC. Bidet. Wash hand basin. Shower enclosure with mixer shower. Panelled bath. Vinyl floor tiles. Vertical radiator. Partially tiled walls. Down lighting.

Breakfast Room

Dimensions: 15' 0" x 10' 11" (4.57m x 3.32m). Radiators. UPVC French doors to side.





Kitchen

Dimensions: 14' 11" x 12' 5" (4.54m x 3.78m). UPVC window to rear. Down lighting. Door to utility. Opening to breakfast room. Vinyl floor tiles. Radiator. Fully fitted kitchen comprising eye level units base units with drawers and work surfaces over. Inset one and a half bowl sink with mixer tap. Neff induction hob with hood. Electric eye level oven and grill. Integrated dish washer and fridge. Under cupboard lighting. Partially tiled walls.

Utility Room

Dimensions: 7' 1" x 9' 0" (2.16m x 2.74m). UPVC opaque glazed door to side. Radiator. Fitted base with work surface over. Eye level units. Inset sink with mixer tap. UPVC windows to rear. Partially tiled walls. Vinyl floor covering.

FIRST FLOOR

Landing

Radiator. Loft access. UPVC window to side. Built in wardrobe. Doors to bedrooms.

Bedroom 3

Dimensions: 16' 3" x 12' 2" (4.95m x 3.71m). UPVC window to front. Built in storage cupboards in eaves. Door to en-suite.

En-Suite

Dimensions: 5' 2" x 10' 7" (1.57m x 3.22m). UPVC opaque window to side. Vertical radiator. Wash hand basin with mixer tap. Partially tiled walls. Low level WC. Vinyl floor covering. Shower enclosure with mixer shower.

Bedroom 2

Dimensions: 18' 3" x 12' 5" (4.90m x 3.78m). UPVC window to rear. Radiator. Built in wardrobe. Built in storage cupboards in eaves. Door to en-suite.





En-Suite

Dimensions: 4' 7" x 10' 4" (1.40m x 3.15m). UPVC opaque window to side. Shower enclosure with mixer shower. Ceramic wall tiles. Wash hand basin with mixer tap. Vertical radiator. Low level WC. Vinyl floor covering.

OUTSIDE

Front Garden

Low maintenance. Mature shrubs.

Driveway

An impressive gated driveway providing super off road parking. Path reading to access gate on Colhugh Street.

Extended Double Garage

Electric garage door. Power and lighting.

External Garden Room

Dimensions: 19' 1" x 18' 0" (5.81m x 5.48m). UPVC opaque door to front. UPVC sliding patio door to rear. Wood effect flooring. Storage cupboard. Door to WC. Potential for conversion to a separate annex subject to the usual consent.

WC

Low level WC. Corner wash hand basin. UPVC opaque window to front.

Side

Paved areas. Pergola. Enclosed. Summer house. Low maintenance gravel area.

Rear Garden

An enclosed garden laid to lawn. Water tap. Shed/workshop with power and lighting. Outdoor electrics. Low maintenance paved areas.





Heddfa

Approximate Gross Internal Area
2056 sq ft - 191 sq m



GROUND FLOOR

FIRST FLOOR

Not to Scale. Produced by The Plan Portal 2023
For Illustrative Purposes Only.



Chris Davies Estate Agents

Chris Davies Estate Agent, Heritage House East Street - CF61 1XY

01446 792020

llantwitmajor@chris-davies.co.uk

www.chris-davies.co.uk/

HELPFUL INFORMATION whilst we try to ensure our sales particulars are complete, accurate and reliable, if there is any point which is particularly important, please ask and we will be happy to check it, including specific information in respect of commuting links, surroundings, noise, views, or condition. For security purposes, applicants who wish to view will need to provide their name, address and telephone number. All measurements are approximate to the widest and longest points. Buyers are advised to instruct a solicitor to obtain verification of tenure and a surveyor to check that appliances, installations and services are in satisfactory condition.