



Latchmere Road
Battersea, SW11

CHESTERTONS





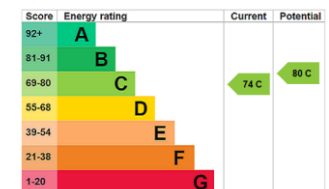
A fantastic three bedroom flat with private roof terrace, spread across 834 sqft.

The property consist of a large open plan living space, with bifold doors out on to the private roof terrace. There are wo generous double bedrooms featuring built in storage, down the corridor is a family bathroom. The principle bedroom, features large amounts of storage and an ensuite Shower Room. Both rooms at the front benefit from the lovely open view opposite through the historic period school buildings, guaranteeing long term natural light.

Latchmere Road runs off Lavender Hill in the heart of SW11. Clapham Junction Mainline station is just a short walk away, as are the shops, cafes, restaurants and bars of Battersea Rise and Northcote Road.

- Share of Freehold
- Three Double Bedrooms
- Open Plan Living Space
- Private Roof Terrace
- Offered Chain Free

Asking Price £750,000



Tenure: Share of Freehold 981 years 10 months
Service Charge: TBC
Ground Rent: TBC
Local Authority: Wandsworth
Council Tax Band: D

Chestertons Battersea & Clapham Sales

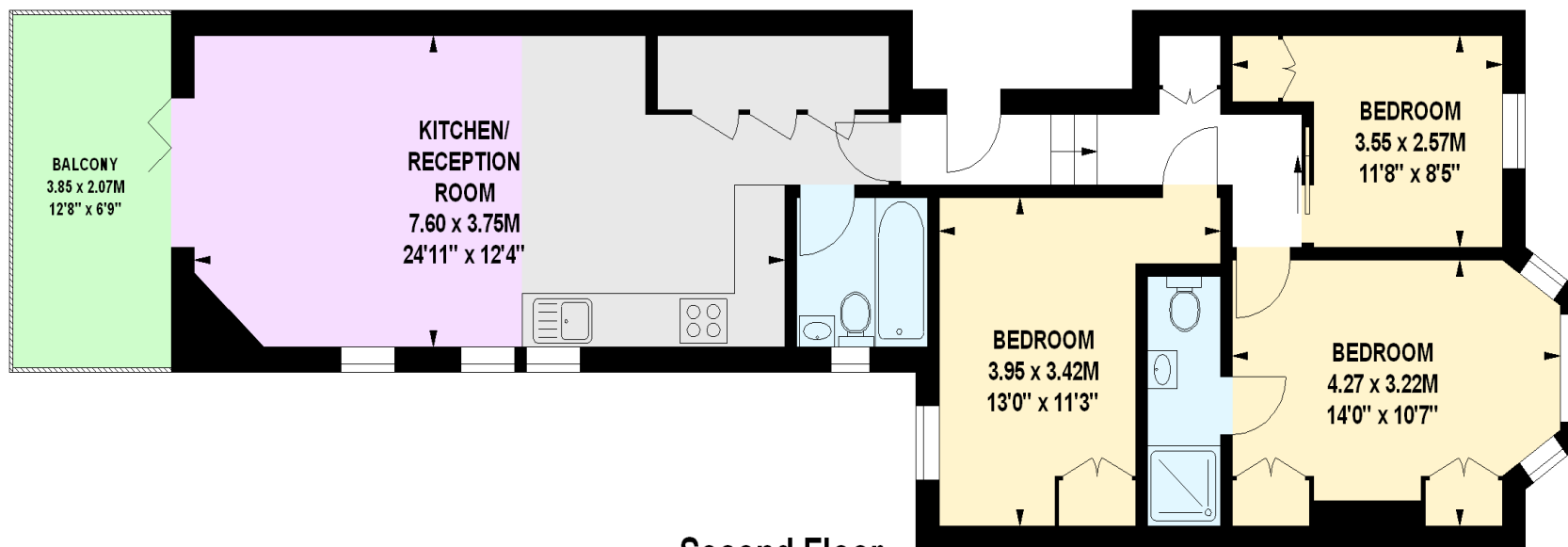
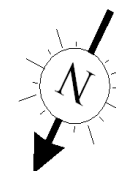
6 Battersea Rise
 London
 SW11 1ED
 battersearise@chestertons.co.uk
 020 7924 4400
 chestertons.co.uk

Latchmere Road, SW11

Approximate gross internal area

77.48 sq m / 834 sq ft

Key :
CH - Ceiling Height



Second Floor

The floor plan is not to scale and measurements and areas shown are approximate and therefore should be used for illustrative purposes only.

The plan has been prepared in accordance with the RICS code of Measuring Practice and whilst we have confidence in the information produced, it must not be relied on.

If there is any aspect of particular importance, you should carry out or commission your own inspection of the property.

Copyright of FeaturePRO.

Chesterton UK Services Limited trading as Chestertons for themselves and for the vendor of this property whose agents they are, give notice that (i) these particulars do not constitute any part of an offer or contract, (ii) all statements contained within these particulars are made without responsibility on the part of Chestertons or the vendor, (iii) whilst made in good faith, none of the statements contained within these particulars are to be relied upon as a statement or representation of fact, (iv) any intending purchasers must satisfy themselves by inspection or otherwise as to the correctness of each of the statements contained within these particulars, (v) the vendor does not make or give either Chestertons or any person in their employment any authority to make or give representation or warranty whatsoever in relation to this property. Wide angle lenses may be used. ©Copyright Chestertons | Chesterton UK Services Limited | Registered Office 40 Connaught Street, Hyde Park, London W2 2AB Registered Company Number 05334580.



This paper is
100% recyclable