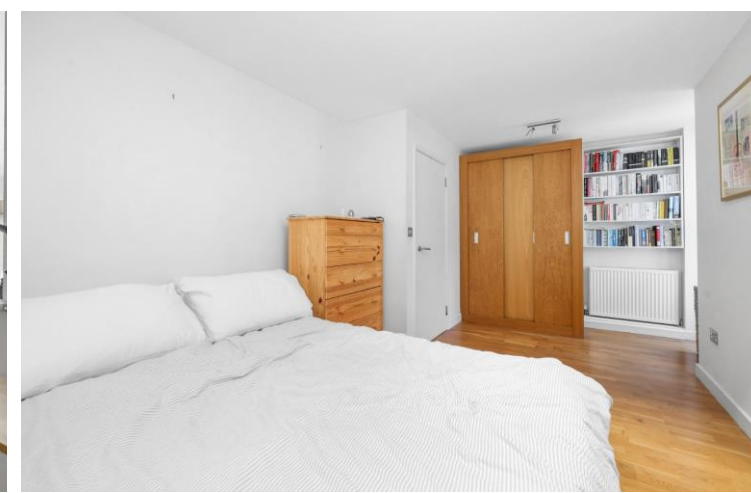




Prescott Place
Clapham, SW4





Chestertons are delighted to present this delightful two bedroom maisonette situated down a quiet street off of Clapham High Street.

The property comprises of two double bedrooms, a large shared bathroom with both shower and bath facilities, a spacious open-plan kitchen with high quality fixtures, ample storage and a large reception area with additional space for dining and entertaining.

Clapham High street area is popular for its abundance of bars and restaurants and also its unrivalled access to all areas of London.

Prescott Place is located within a short walk of the cafes, restaurants and amenities of Clapham High Street, Clapham North & Clapham Common Underground and the Clapham High Street mainline station. The bright green spaces of Clapham Common are also a short stroll away.

- Light and Bright Maisonette
- Two double bedrooms
- Family bathroom
- Reverse plan layout
- Central Clapham Location
- Excellent transport links

Asking Price £650,000

Energy Efficiency Rating		
Energy efficient - lower running costs	Current	Potential
90-100 A		
81-90 B		
69-80 C	80	80
55-68 D		
49-54 E		
45-48 F		
35-44 G		
Not energy efficient - higher running costs		
England, Scotland & Wales EU Directive 2002/91/EC		

Tenure: Share of Freehold 113 years

Local Authority: London Borough Of Lambeth

Council Tax Band: E

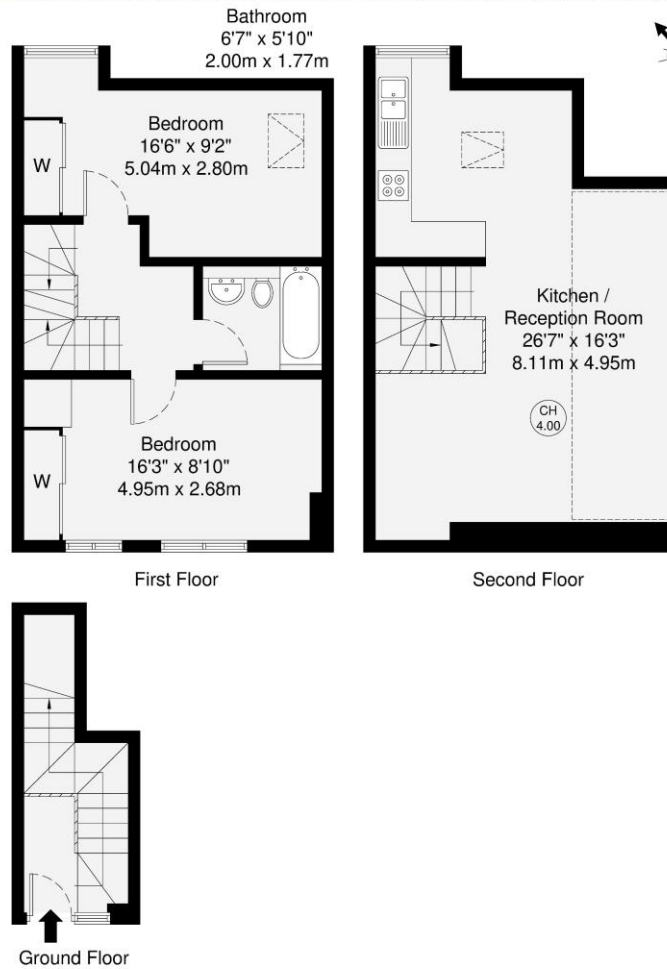
Chestertons Battersea & Clapham Sales

6 Battersea Rise
London
SW11 1ED

battersearise@chestertons.co.uk

020 7924 4400

chestertons.co.uk



GROSS INTERNAL AREA (GIA)
The footprint of the property
70.8 sq m / 762 sq ft

TOTAL STORAGE SPACE
Storage and wardrobes total area
2.0 sq m / 21 sq ft

EXTERNAL FEATURES
Garden, Balcony, Terrace, Verandah etc.
0.0 sq m / 0.0 sq ft

RESTRICTED HEAD HEIGHT
Limited use area under 1.5m
9.5 sq m / 102 sq ft

Disclaimer : Floorplan measurements are approximate and are for illustrative purposes only.
While we do not doubt the floorplan accuracy and completeness, you or your advisors should
conduct a careful, independent investigation of the property in respect of monetary valuation.

Maison
VUE

