



Battersea Rise

Battersea, SW11

Asking Price £525,000

The accommodation comprises a spacious kitchen/ reception room, with double doors leading out to the south facing balcony, two bedrooms and shower room.



Battersea Rise

Battersea, SW11

- 2 bedroom flat
- Victorian conversion
- South facing balcony
- Ample storage



A fantastic two bedroom apartment located on Battersea Rise.

The accommodation comprises a spacious kitchen/ reception room, with double doors leading out to the south facing balcony, two bedrooms and shower room.

The property is moments from Clapham Junction which has commuter links to London Victoria, Waterloo, Gatwick Airport and various parts of the country. The property is also close to numerous bus routes, local bars, shops & restaurants which can be found on Battersea Rise, Northcote Road and St Johns Road.

Tenure: Leasehold 173 years 4 months

Service Charge: £0

Ground Rent: £0

Local Authority: London Borough of Wandsworth

Council Tax Band: C

Energy Efficiency Rating		
	Current	Potential
Very energy efficient - lower running costs		
A (92-100)		
B (81-91)		
C (69-80)	73	81
D (55-68)		
E (39-54)		
F (21-38)		
G (1-20)		
Not energy efficient - higher running costs		
England, Scotland & Wales EU Directive 2002/91/EC		

Chestertons Battersea & Clapham Sales

6 Battersea Rise

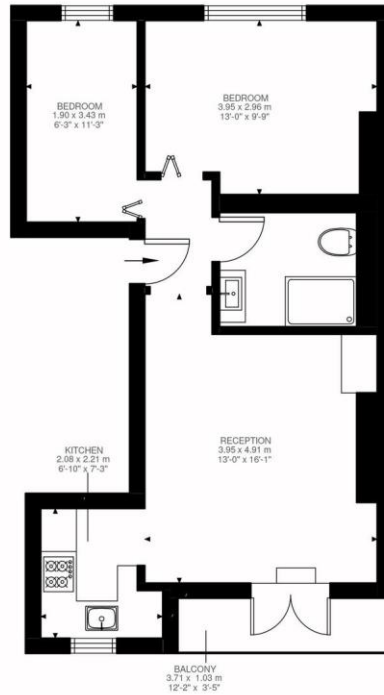
London

SW11 1ED

battersearise@chestertons.co.uk

020 7924 4400

chestertons.co.uk



First Floor
531 ft²

Battersea Rise, SW11

Approximate Gross Internal Area
49.34 SQ.M / 531 SQ.FT

Illustration for identification purposes only. Not to scale.
Floor Plan Drawn According To RICS Guidelines.

