



Mustow Place  
London, SW6

CHESTERTONS



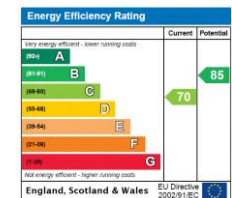


Modernised to a very high standard by the current owners using contemporary colours, this home offers, space, light and elegance in abundance. The high quality kitchen has ample work surfaces and state-of-the-art integrated appliances. The open plan living/dining room also has a study area with beautiful parquet flooring throughout. The first floor has 3 bedrooms and 2 bathrooms whilst outside there is a rear garden and home office. Additional benefits include private off-street parking and substantial loft storage space.

Mustow Place is a sought-after private residential development quietly situated just off Muster Road, perfectly positioned between Fulham Road and New Kings Road in a prime Parsons Green area of Fulham. This location offers residents an array of excellent local amenities and convenient transport links, enhancing its appeal.

- Recently Renovated
- Mews House
- Three Bedrooms, Two Bathrooms
- Home Office
- Parking

Asking Price £1,350,000



**Tenure:** Share of Freehold 960 years  
**Service Charge:** £700  
**Ground Rent:** £0  
**Local Authority:** Hammersmith and Fulham  
**Council Tax Band:** G

*Chestertons Parsons Green Sales*

78 New Kings Road  
 London  
 SW6 4LT  
 fulham@chestertons.co.uk  
 020 7731 4448  
 chestertons.co.uk

## Mustow Place, SW6

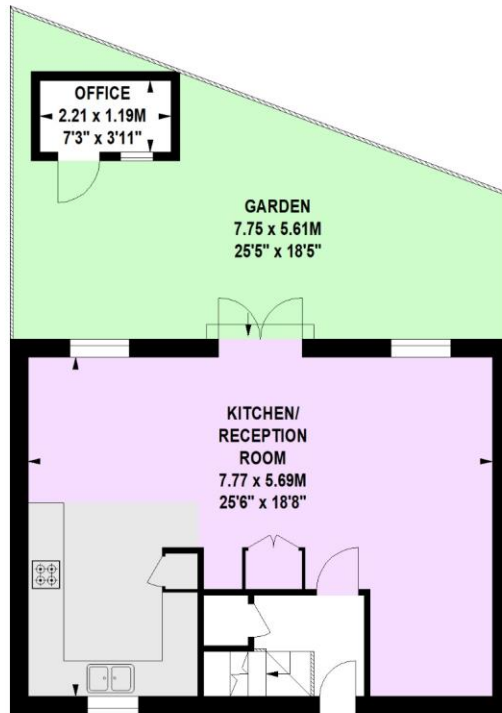
Approximate gross internal area

91.60 sq m / 986 sq ft

(Including Office & Excluding Loft)

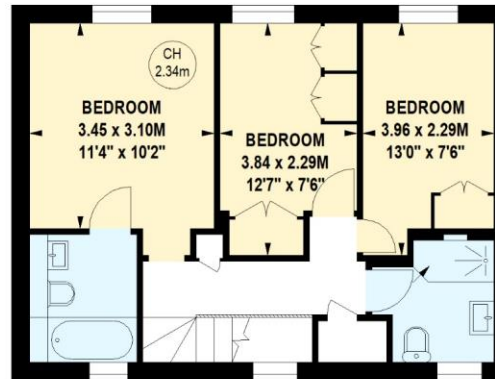
Office

2.60 sq m / 28 sq ft

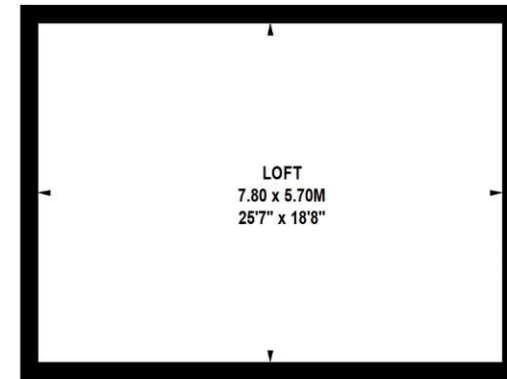


Ground Floor

Key :  
CH - Ceiling Height



First Floor



The floor plan is not to scale and measurements and areas shown are approximate and therefore should be used for illustrative purposes only. The plan has been prepared in accordance with the RICS code of Measuring Practice and whilst we have confidence in the information produced, it must not be relied on. If there is any aspect of particular importance, you should carry out or commission your own inspection of the property.

