



Mustow Place
Parsons Green, SW6

CHESTERTONS





A beautifully presented 3 bedroom house in the heart of Parsons Green with a fabulous private southwest facing garden.

The house is set behind an enclosed front garden and on the ground floor is a modern kitchen and fabulous reception room which steps out on to a refined, southwest facing garden. Furthermore, on the ground floor is a guest cloakroom whilst on the first floor are three bedrooms and two bathroom. There is a loft with a lot of built in storage space too. A private parking also available as well as one for visitors.

The location of the property is conveniently located for access to Parsons Green station and all the shops, bars boutiques and restaurants surrounding the green itself.

- Mid terraced house
- 3 Bedrooms : 1 Bathroom
- Private Parking
- Large Garden

Asking Price £1,150,000

Energy Efficiency Rating		Current	Potential
90-100	A		
81-89	B		88
72-80	C	75	
63-71	D		
54-62	E		
45-53	F		
35-44	G		
Not energy efficient - higher running costs			

England, Scotland & Wales EU Directive 2002/91/EC

Tenure: Share of Freehold 960 years 5 months
Service Charge: £0 TBC
Ground Rent: £0 Peppercorn
Local Authority: Hammersmith and Fulham
Council Tax Band: G

Chestertons Parsons Green Sales

78 New Kings Road
 London
 SW6 4LT

fulham@chestertons.co.uk

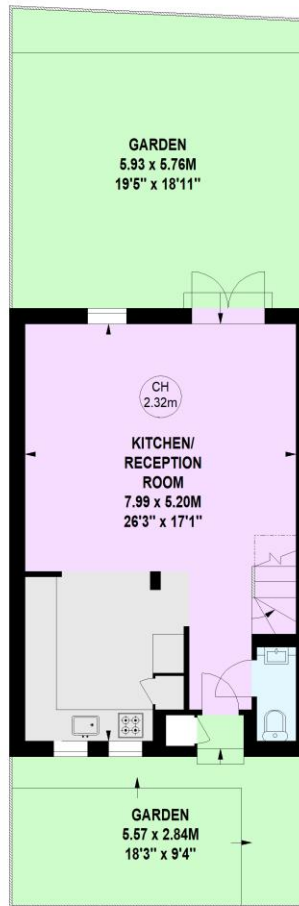
020 7731 4448

chestertons.co.uk

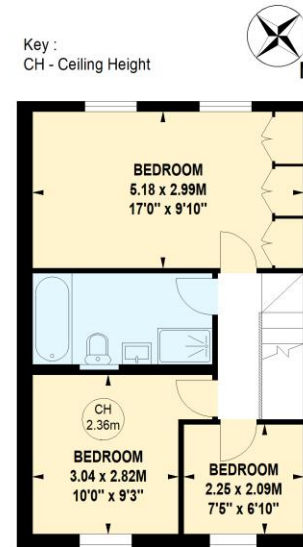
Mustow place, SW6

Approximate gross internal area

82.50 sq m / 888 sq ft



Ground Floor



First Floor

Key :
CH - Ceiling Height



The floor plan is not to scale and measurements and areas shown are approximate and therefore should be used for illustrative purposes only. The plan has been prepared in accordance with the RICS code of Measuring Practice and whilst we have confidence in the information produced, it must not be relied on. If there is any aspect of particular importance, you should carry out or commission your own inspection of the property.

