

# Heathfields

MONKTONHILL ROAD  
TROON



c o r u m

[corumproperty.co.uk](http://corumproperty.co.uk)



MONKTONHILL ROAD  
TROON









5 | BEDROOMS

5 | BATHROOMS

5 | PUBLIC ROOMS

**Tucked away behind private gates on Troon's peaceful Monktonhill Road, Heathfields is a remarkable contemporary home - crafted for comfort, connection, and everyday indulgence.**

Spanning circa 8000 sq ft and set within over an acre of landscaped gardens, this five-bedroom home blends elegant design with modern architecture. From its sweeping entrance hall to the bespoke Edward Loxley kitchen and cinema room, every detail has been considered for luxurious family living.

Light-filled and generous, the interiors flow with purpose - from relaxed kitchen dining to formal lounges, library spaces, and a rear wing dedicated to wellness and play. Whether hosting friends, gathering as a family, or simply unwinding, the layout supports every aspect of busy modern life.

Upstairs, four beautiful bedrooms include a standout principal suite with dressing room and garden views. A versatile fifth room above offers space for a teenager's den, games room or guest hideaway.

Full-length bi-fold doors open onto expansive terraces, making the transition from indoors to out feel effortless. The garden becomes a natural extension of the living space, with sweeping lawns and specimen trees framing an incredible 1100 sq ft outdoor kitchen - complete with pizza oven, bar and covered dining, perfect for year-round entertaining.

A pool spa, sauna, gym, and cinema offer space for wellness, escapism, and fun - just steps from the back door.





















































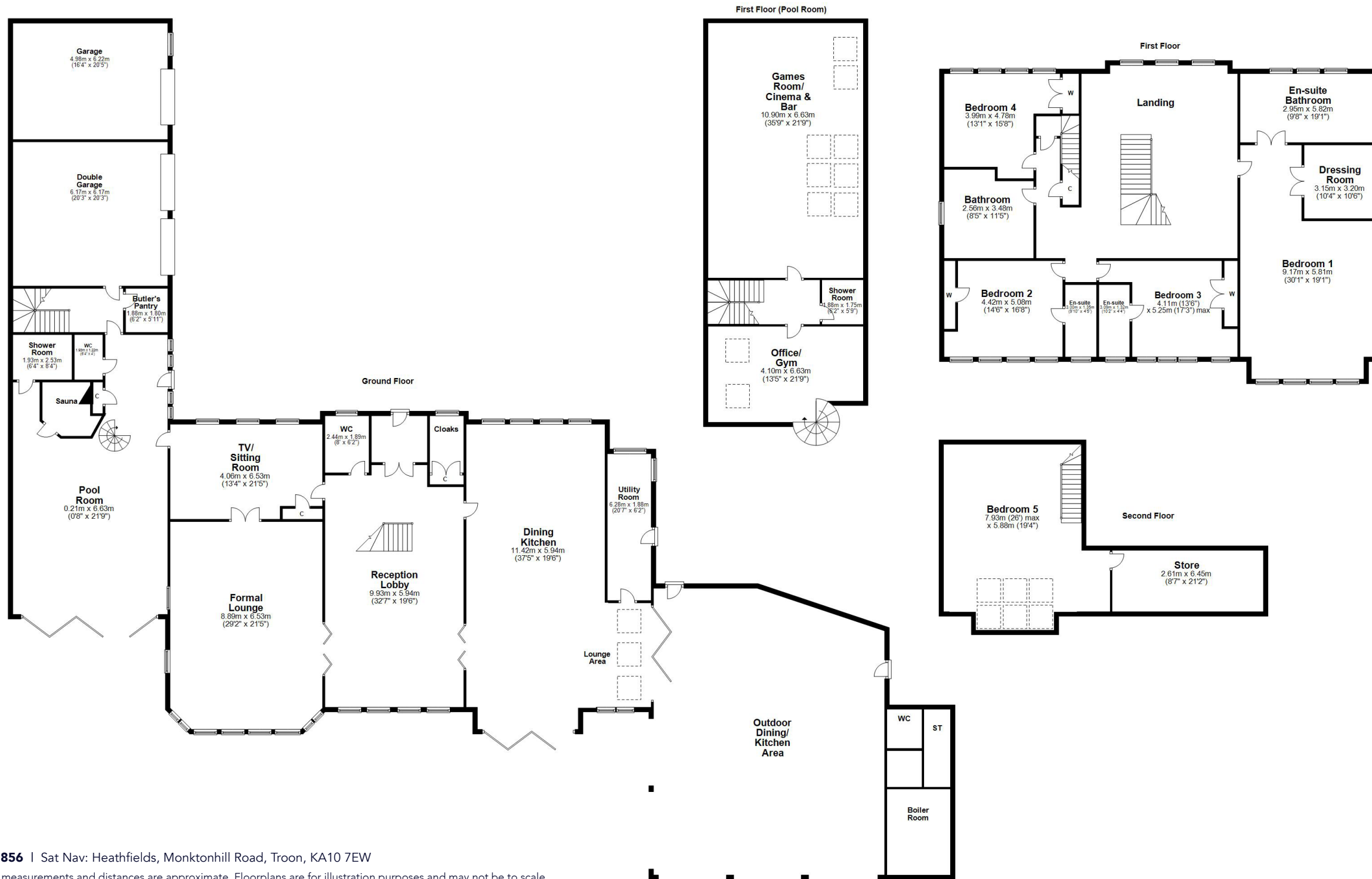












*Heathfields*

MONKTONHILL ROAD  
TROON

*Despite its quiet setting, Heathfields is minutes from Troon's town centre, golf courses and coastline. Excellent local schools, a direct rail link to Glasgow, and nearby Prestwick Airport ensure convenience never comes at the cost of privacy.*

**TR1856** | Sat Nav: Heathfields, Monktonhill Road, Troon, KA10 7EW

\* All measurements and distances are approximate. Floorplans are for illustration purposes and may not be to scale.









c o r u m

Corum Troon

29 Portland Street, Troon, KA10 6AA

01292 310 010

[troon@corumproperty.co.uk](mailto:troon@corumproperty.co.uk)

[www.corumproperty.co.uk](http://www.corumproperty.co.uk)