



25 WEAVERS WYND

IRVINE

www.corumproperty.co.uk


c o r u m



2 | BEDROOMS

2 | BATHROOMS

1 | PUBLIC ROOM

Rarely available and immaculately presented this stunning two bedroom top floor flat benefits from generous attic storage and allocated off street parking, situated in a highly sought after location of Irvine.

The property is entered via a security entry door system, a well-maintained close with stairs leading up to the top floor. Internally there is a welcoming reception hallway with a storage cupboard and utility, which is plumbed for a washing machine and has space for a tumble drier. Access to the partially floored attic is via a loft ladder in the reception hall. The front facing, bright and spacious, open plan kitchen/lounge is a wonderful space to relax in.

The kitchen has a suite of integrated appliances including a fridge/freezer and dishwasher with ample upper and lower storage units, mood lighting and breakfast bar. The lounge also has room for a dining area and comes complete with French doors and Parisian balcony. Both bedrooms benefit from built in sliding mirror wardrobes. The master bedroom has an en-suite shower room. The modern bathroom has a white three-piece bathroom suite.

Other benefits include gas central heating, double glazing, off street parking to the rear, well maintained communal garden grounds, and all within walking distance to all local amenities.

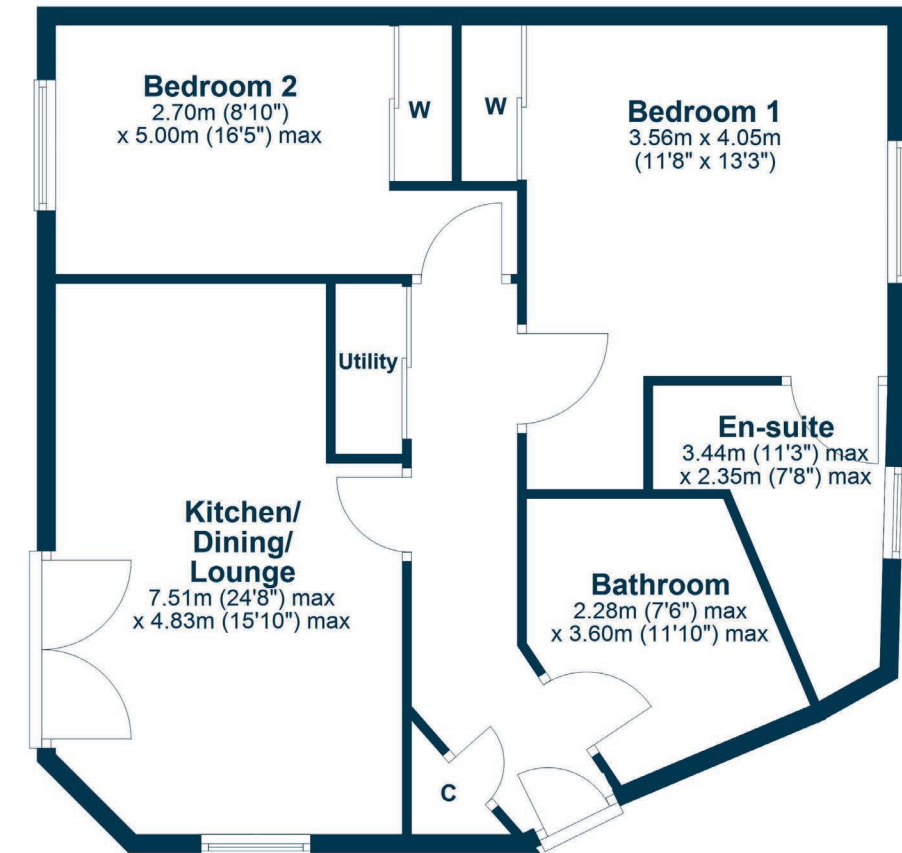








Ground Floor



Weavers Wynd is well located for access to the comprehensive range of amenities offered by the market town of Irvine, including excellent schools, shops, restaurants and bars, transport links to Glasgow and beyond, supermarkets and leisure facilities, which include the new Portal Leisure Centre adjoining Irvine Town Hall, and numerous golf courses. There are a range of local championship golf courses within Ayrshire, in addition to the nearby Ravenspark Golf Club, including the Irvine Golf Club at Bogside, Dundonald Links and Royal Troon and Trump Turnberry, both regular hosts of the Open Championship.

TR1824 | Sat Nav: 25 Weavers Wynd, Irvine, KA12 0NZ

For the full home report visit www.corumproperty.co.uk

* All measurements and distances are approximate Floorplans are for illustration purposes and may not be to scale.



WE'RE **SOLD** ON
YOUR FUTURE



Corum Troon
29 Portland Street, Troon, KA10 6AA

Tel: 01292 310 010

Email: troon@corumproperty.co.uk

www.corumproperty.co.uk