



141 COMMONWEALTH DRIVE
TROON

www.corumproperty.co.uk


c o r u m



5 | BEDROOMS

3 | BATHROOMS

3 | PUBLIC ROOMS

This stunning 5 bedroom Buchanan house type has luxury spaces that you will love to relax in. This is a dream home with flexible living areas, a luxury kitchen, elegant bedrooms and luxurious bathrooms.

Commonwealth Drive forms part of the Queens Court development of executive family homes by Taylor Wimpey, a renowned national builder that has been crafting a range of quality properties and neighbourhoods for decades. Number 141 is the simply stunning five bedroom Buchanan house-type, the largest model in the exquisite Caledonian Collection, and offers to the market an unrivalled amount of living space on a preferred plot, with an open outlook to the rear and professionally landscaped gardens.

The internal accommodation extends to around 2500 sq ft, across 8 flexible apartments and complimented by 3 bathroom suites, an open plan luxury kitchen, an open plan family room, an incredible master bedroom suite and ample storage throughout. There are quality floor coverings, tasteful, neutral decor, and all the conveniences one would expect from a modern family home including a suite of integrated appliances. The property also has an impressive position, and is set close to the range of amenities offered by the highly popular seaside town of Troon, including excellent schools, first class golf courses, transport links and the seafront itself.

In more detail, the internal accommodation extends to an entrance hallway with a bright, open layout and stairs to the upper floor, a downstairs bedroom/ study with under stairs storage, a formal dining room/sitting room, a spacious lounge to the rear, a downstairs W.C, an open plan dining kitchen with ample wall and base units, integrated appliances, a breakfast bar, a separate utility room with access through to the double garage. The open family room/ding area has French doors out into the garden. On the upper floor there are storage cupboards, loft access, a stunning master bedroom suite with a walk-in dressing room and a large master en suite, a second bedroom with an en-suite shower room, a four piece family bathroom suite and two further large double bedrooms.

Externally, the front garden is laid to lawn with block paved driveway parking and an integral double garage. There is access to the double garage from the utility room internally and there is gated access at the side round to the fully enclosed rear garden, which has artificial turf and a large patio area, perfect for outside entertainment and barbecues in a pet and child friendly garden.

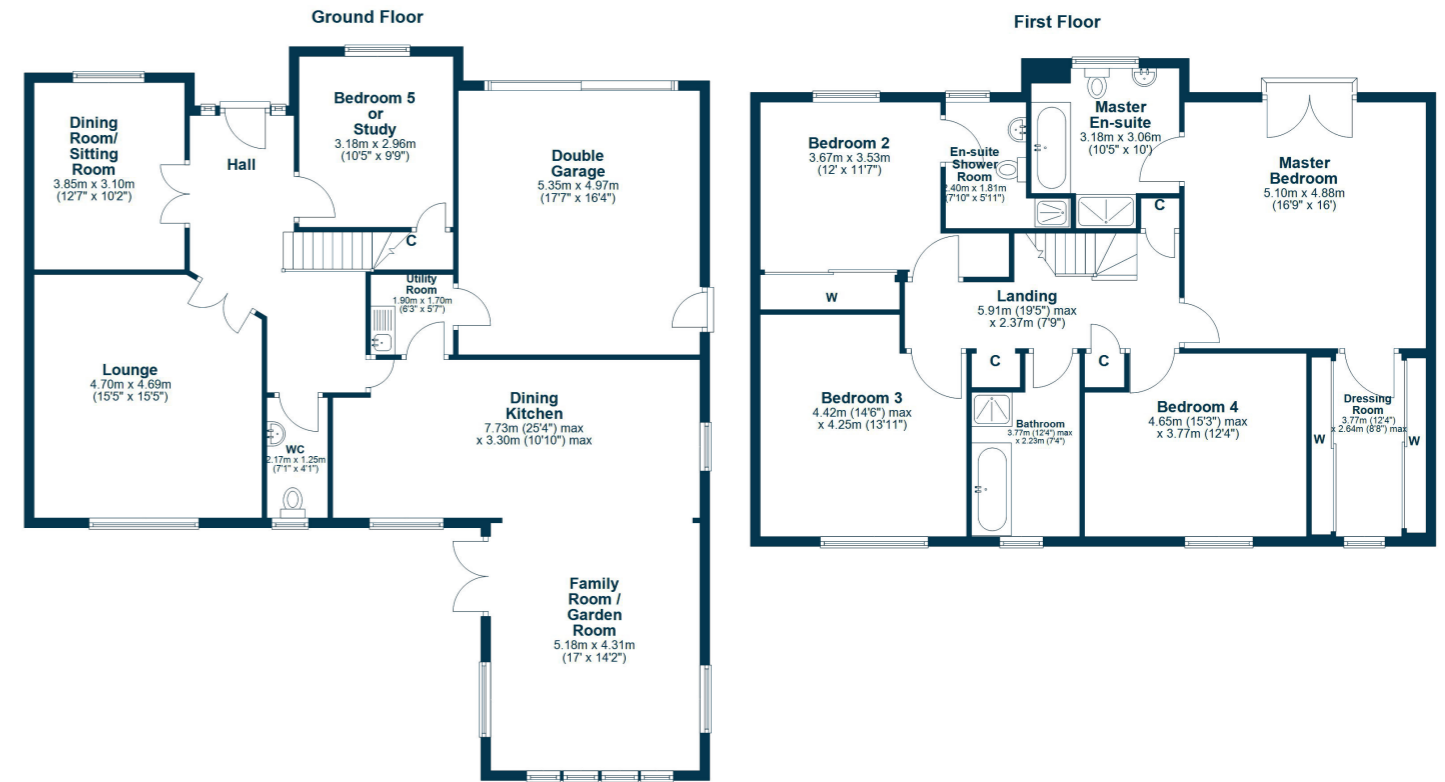












Commonwealth Drive is located within the sought after Queens Court development which is a perfectly positioned on the fringes of Troon within easy reach of a wide range of amenities including both primary and secondary schooling and local shops. Troon town centre is around two miles distant and provides a comprehensive range of amenities including supermarket and retail shopping and a mainline rail link to Ayr and Glasgow.

TR1810 | Sat Nav: 141 Commonwealth Drive, Troon, KA10 7FA

For the full home report visit www.corumproperty.co.uk

* All measurements and distances are approximate Floorplans are for illustration purposes and may not be to scale.



WE'RE **SOLD** ON
YOUR FUTURE



Corum Troon
29 Portland Street, Troon, KA10 6AA

Tel: 01292 310 010

Email: troon@corumproperty.co.uk

www.corumproperty.co.uk