



45 DEER MEADOW
SYMINGTON

www.corumproperty.co.uk





5 | BEDROOMS

4 | BATHROOMS

3 | PUBLIC ROOM

A stunning and impressive detached family villa set in the heart of the popular village of Symington, with a wealth of accommodation across 6 main apartments, a double garage and private, landscaped gardens.

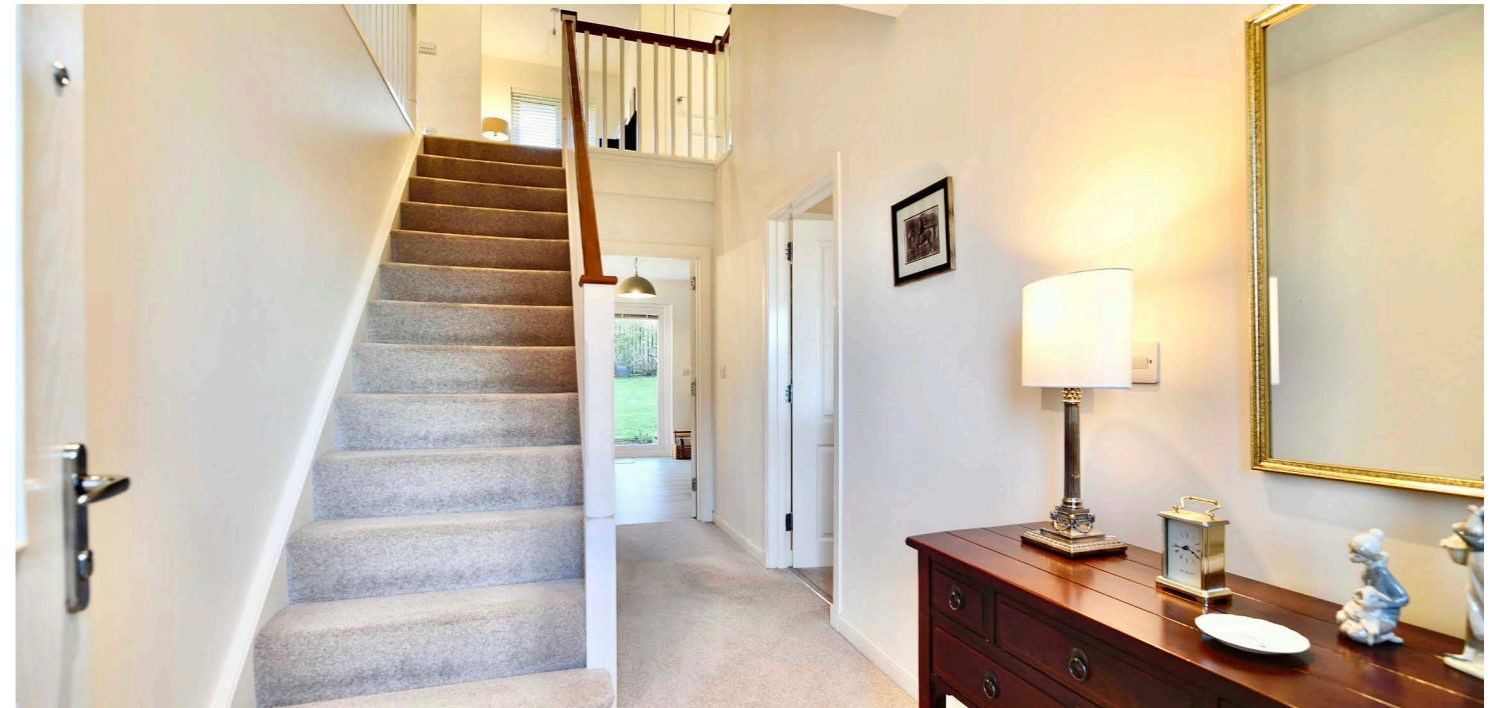
Deer Meadow is an executive development, nestled within the picturesque village of Symington, which is perfectly placed for immediate access to rolling Ayrshire countryside and road networks linking into Troon, Ayr, Irvine, Kilmarnock and Glasgow city centre. Number 45 is a beautifully presented and lovingly maintained detached family villa, which represents the very best standard in well-appointed and spacious family living. This fantastic home is set on a corner plot, which benefits from excellent privacy, adjacent open green spaces and elevated views west across to Arran from the master bedroom. The internal accommodation extends to around 2500 sq ft, across 6 flexible apartments and complimented by 4 bathroom suites, an open plan luxury dining kitchen, a downstairs WC, a separate utility room, an incredible master bedroom suite and ample storage throughout. There are quality floor coverings, tasteful, neutral decor, and all the conveniences one would expect from a modern family home. The interior is complimented by gorgeous landscaped gardens, that include a double driveway leading to the integral double garage at the front and fully enclosed gardens at the rear with a south facing aspect.

In more detail, the internal accommodation extends to an entrance hallway with a bright, open layout, stairs to the upper floor and under stairs storage, a spacious bay-windowed lounge with a feature gas fireplace and double glass doors leading through to a formal dining room, which is open plan to an impressive dining kitchen with a family area, two sets of French doors leading out the garden and ample wall and base units, a separate utility room and a downstairs WC. On the upper floor there is a storage cupboard and loft access off the landing, a stunning master bedroom suite with double aspect windows, a walk-in dressing room and large four piece master en suite, two bedrooms with an en suite shower room, a family bathroom suite and two further bedrooms.

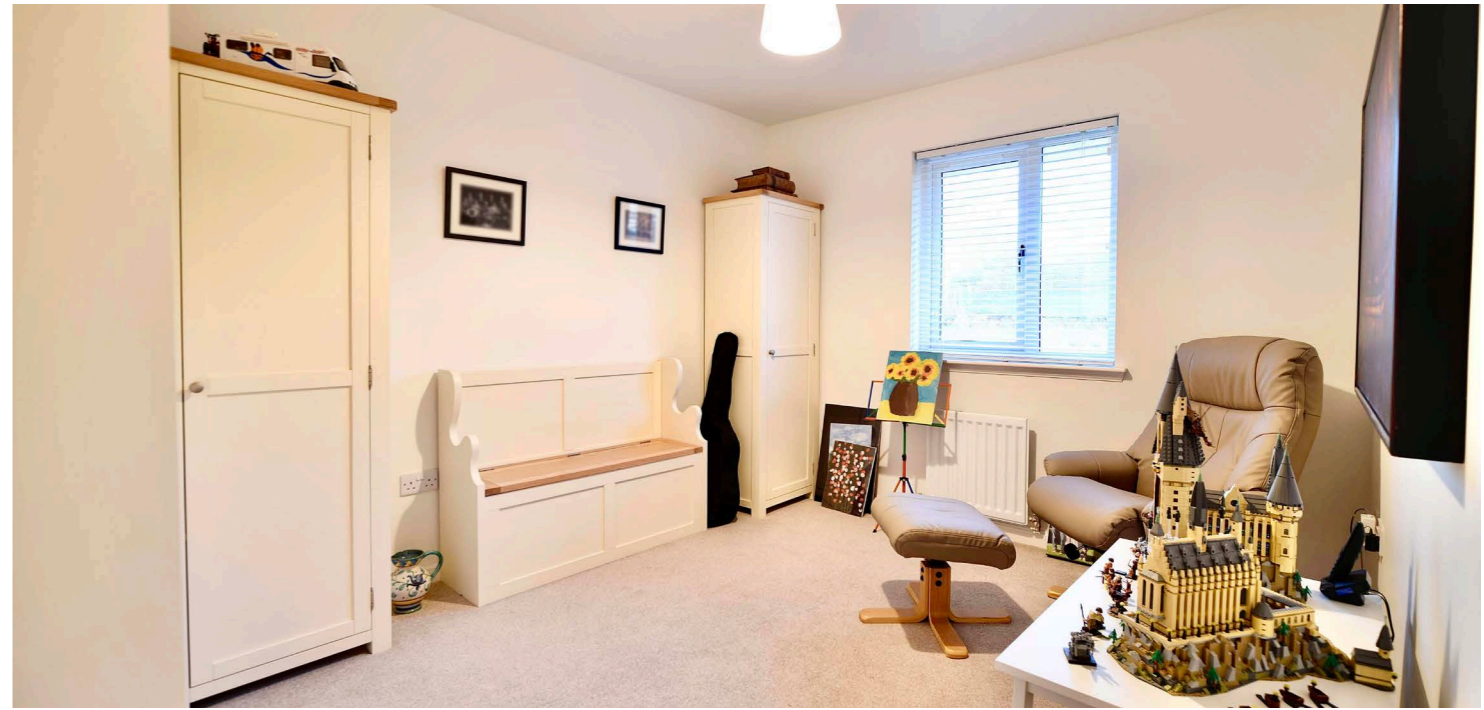
Externally the front garden is laid to lawn, with a block paved driveway parking and an integral double garage. There is access to the garage from the side and there is gated access at the side round to the fully enclosed rear garden, which has excellent privacy, a large patio area, lawn and decorative shrubs and trees.



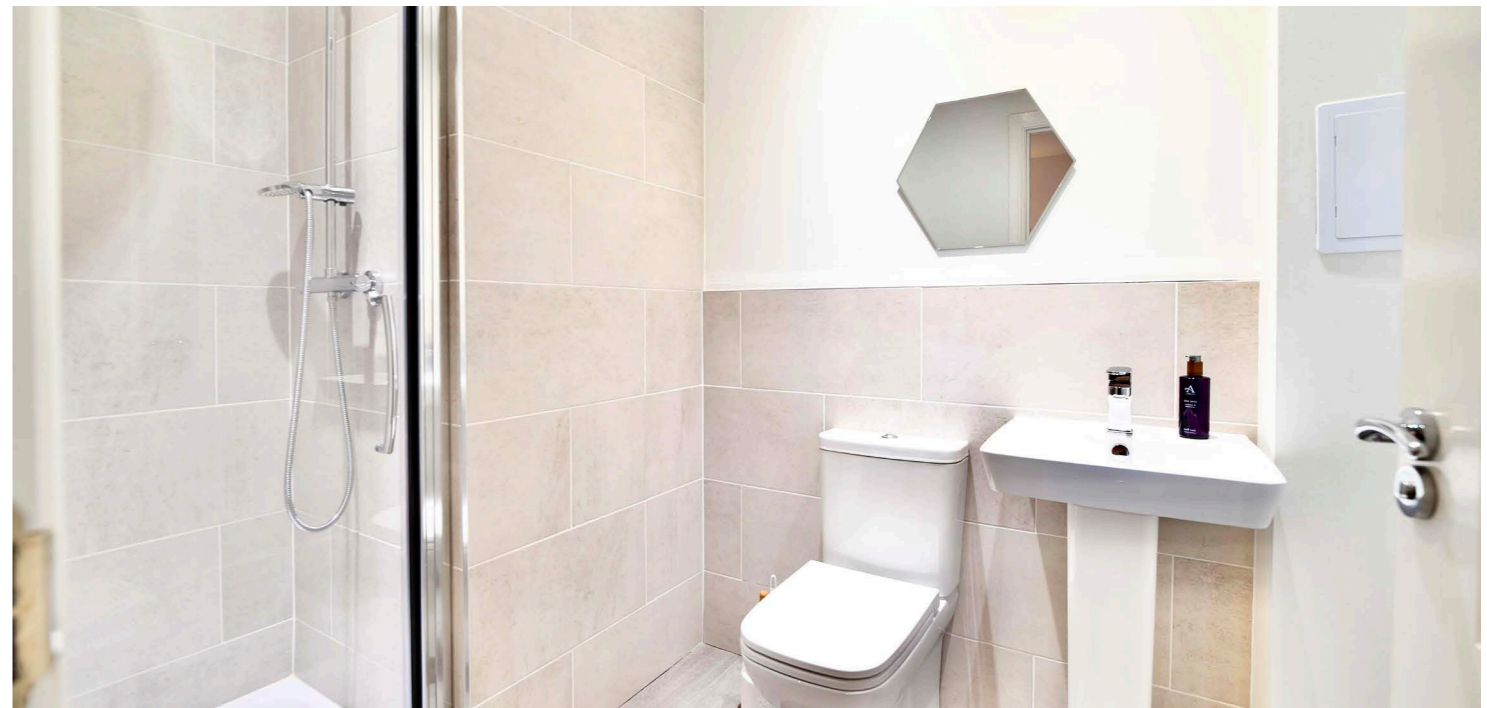
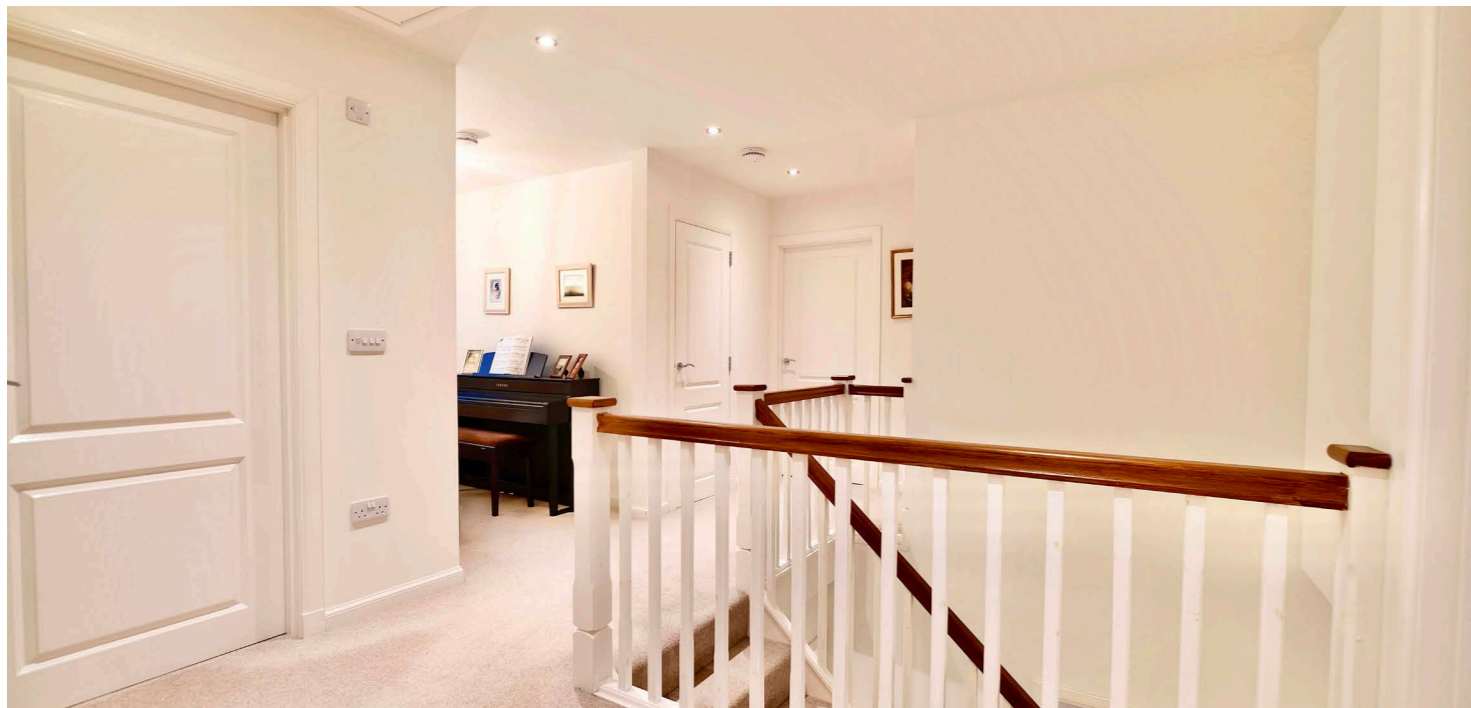
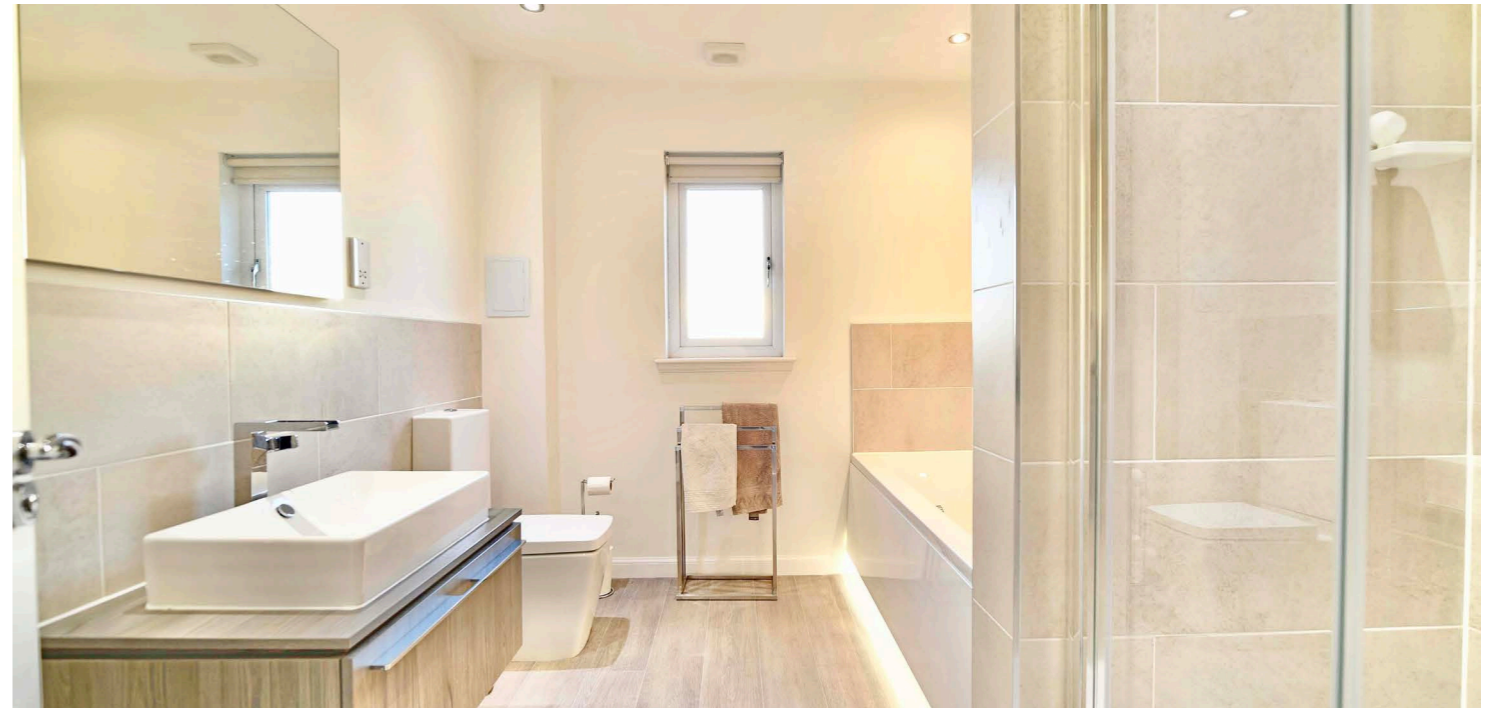


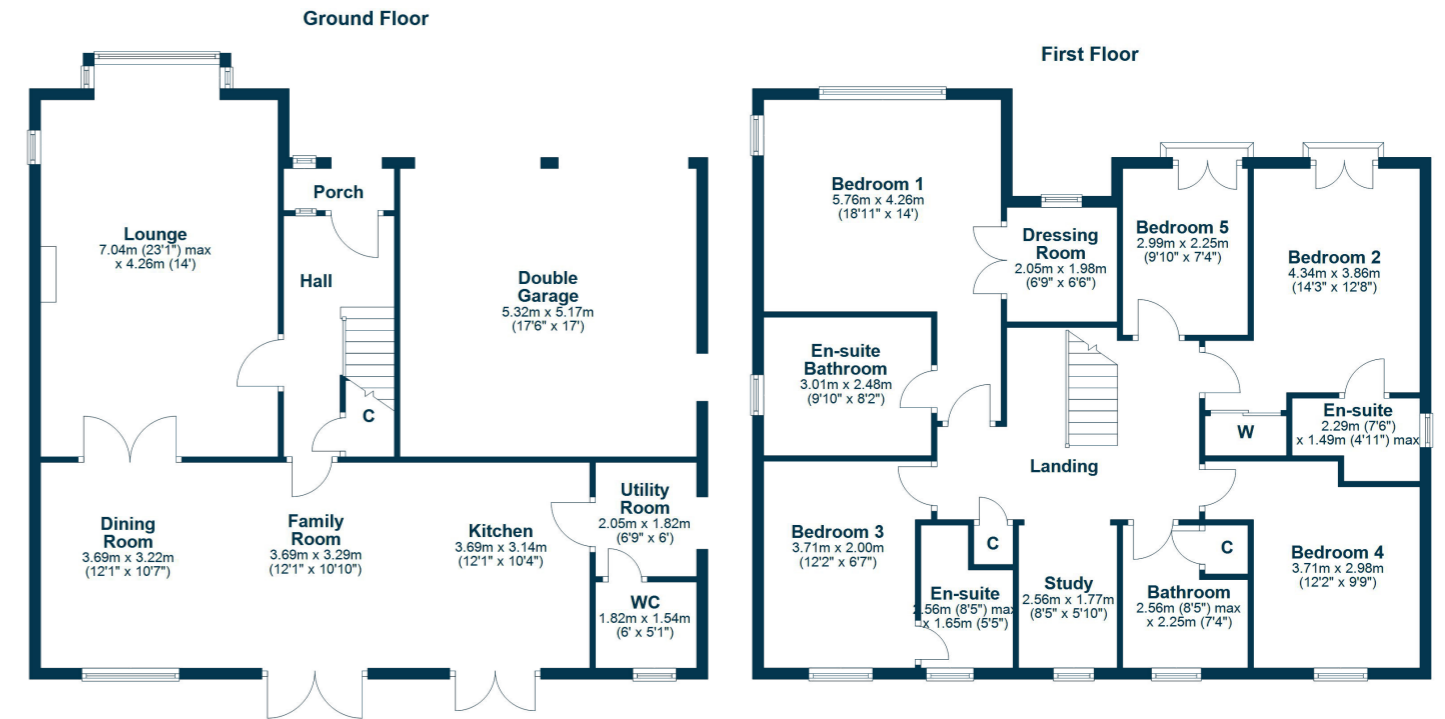












Symington is a delightful village close to the A77/M77 linking to both Glasgow and Ayr and around 5 miles from the coastal town of Troon. The village itself provides a range of amenities including various shops, a post office, The Wheatsheaf restaurant/bar and an excellent primary school. Prestwick International Airport, with regular flights to destinations throughout Europe is around 5 miles distant and South Ayrshire boasts a range of championship golf courses.

TR1801 | Sat Nav: 45 Deer Meadow, Symington, KA1 5SE

For the full home report visit www.corumproperty.co.uk

* All measurements and distances are approximate Floorplans are for illustration purposes and may not be to scale.



WE'RE **SOLD** ON
YOUR FUTURE



Corum Troon
29 Portland Street, Troon, KA10 6AA

Tel: 01292 310 010
Email: troon@corumproperty.co.uk

www.corumproperty.co.uk