



Flat 11 Glebe Court, 27 Whitethorn Avenue
Coulston, CR5 2AP

Offers Over £239,950



Flat 11 Glebe Court, 27 Whitethorn Avenue

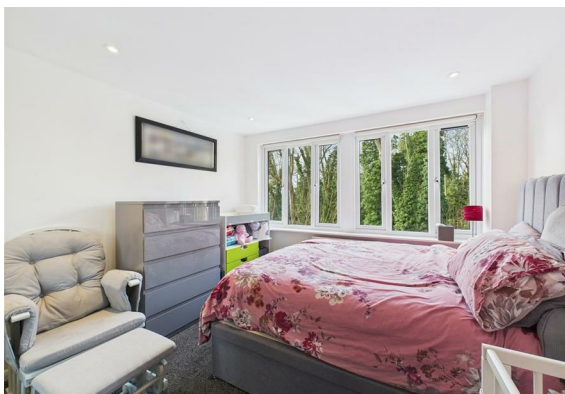
Price guide £250,000-£275,000

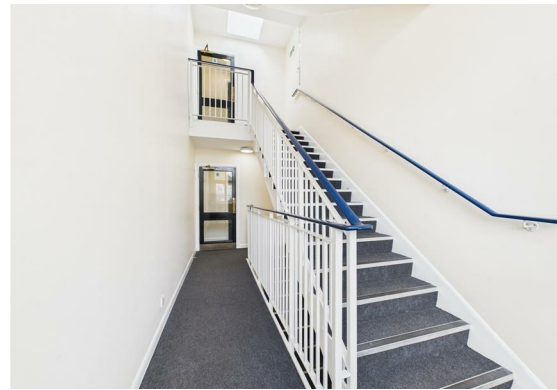
Nestled in the charming area of Coulsdon, this delightful top floor flat on Whitethorn Avenue offers a perfect blend of comfort and convenience. With one spacious double bedroom and a well-appointed bathroom, this property is ideal for individuals or couples seeking a tranquil living space.

The flat boasts a generous reception room, providing ample space for relaxation and entertaining with additional storage into the eaves. The good-sized rooms throughout the property create a welcoming atmosphere, allowing for easy living and personalisation.

One of the standout features of this flat is the allocated parking space and communal gardens, a rare find in such a desirable location. Residents will appreciate the ease of access to local amenities, parks, and transport links, making it an excellent choice for those commuting or exploring the surrounding areas.

We highly recommend viewing this property to fully appreciate its charm and potential. Whether you are looking to invest or find your next home, this flat on Whitethorn Avenue is not to be missed.





entrance hall

lounge -dining area

kitchen

bathroom

bedroom

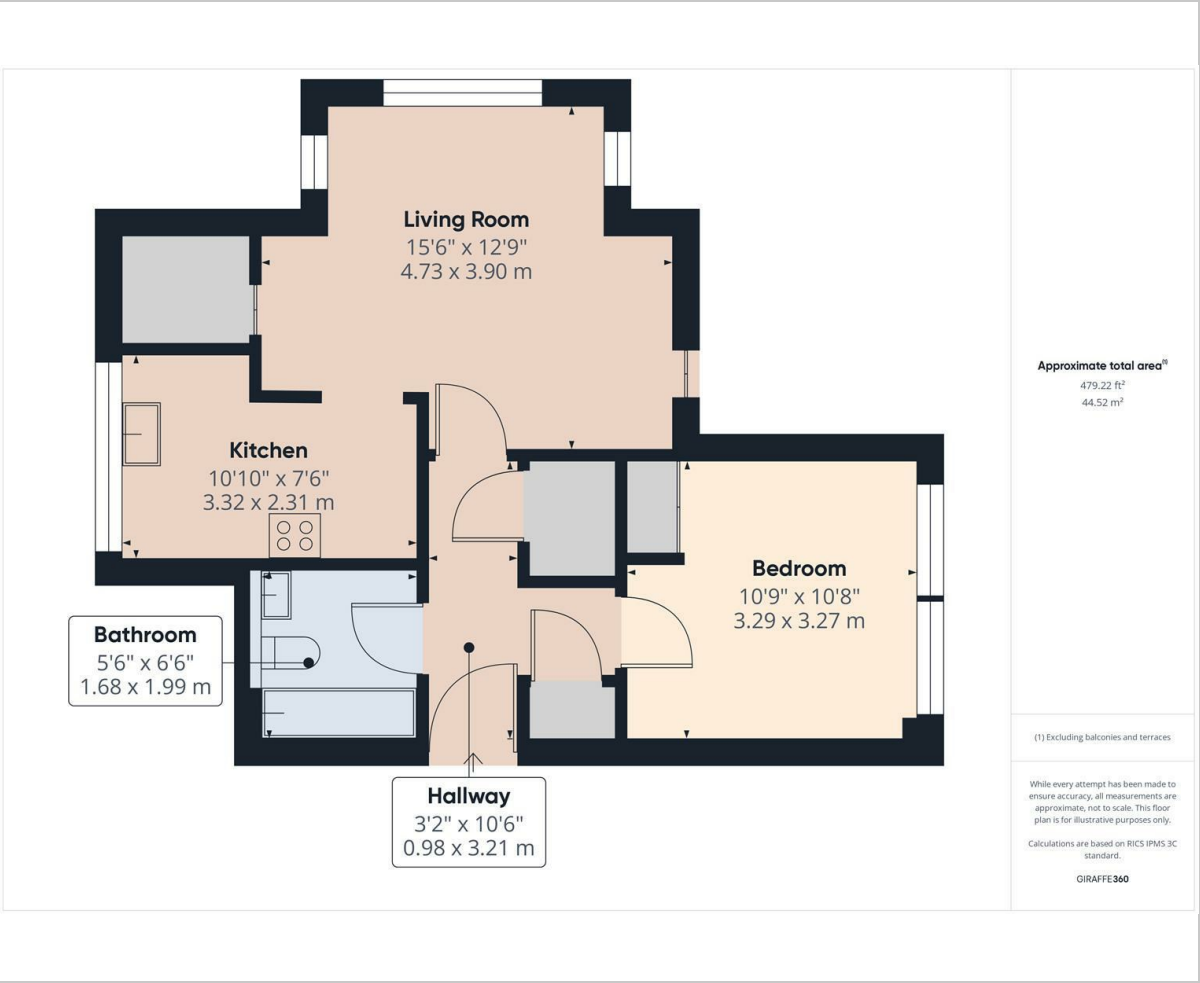
eves storage

entry phone

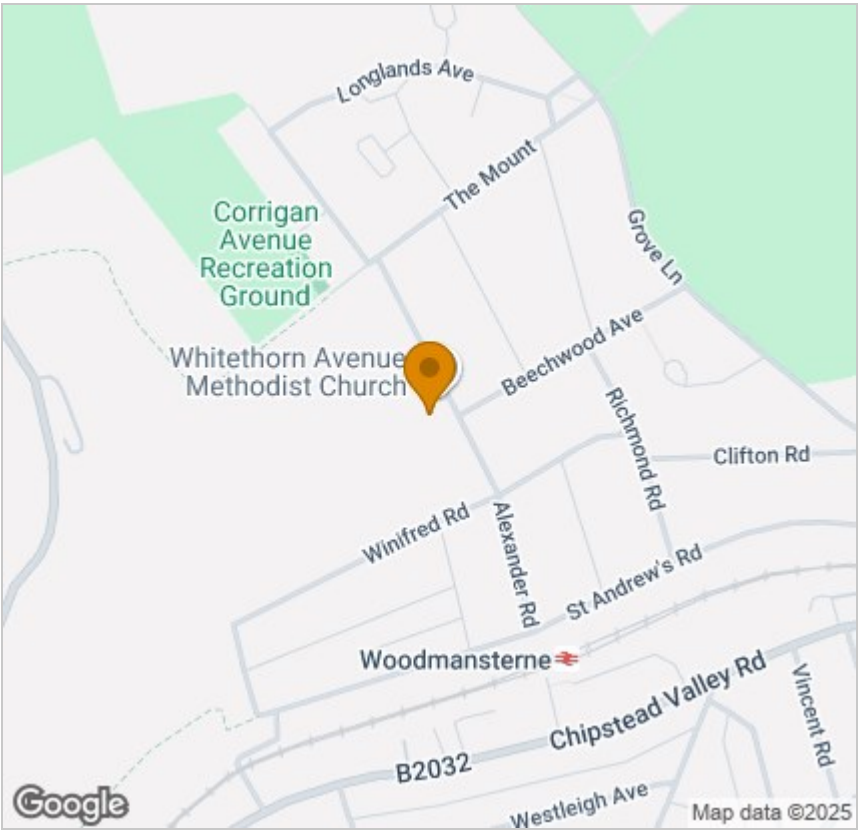
parking space

communal gardens

Floor Plan



Area Map



Viewing

Please contact our Coulsdon Sales Office on 0208 763 8878 if you wish to arrange a viewing appointment for this property or require further information.



147 Brighton Road,
Coulsdon,
Surrey
CR5 2NJ
Tel: 020 8763 8878
Email: sales@danieladamsestateagents.co.uk
www.danieladamsestateagents.co.uk

Energy Efficiency Graph

