



**Flat 15, Wynne House, 10 Leaden Hill**  
**Coulsdon, CR5 2DZ**

**£319,950**





## Flat 15, Wynne House, 10

Leaden Hill SE20 2DZ

Nestled in the charming area of Leaden Hill, Coulsdon, this stunning two-bedroom top floor flat is a perfect choice for those seeking modern living with convenience. Built in 2019, the property boasts a generous and well-designed space, making it ideal for both first-time buyers and investors alike.

As you enter, you are greeted by a welcoming entrance hall that leads to a bright and airy lounge, seamlessly open to the contemporary kitchen area. This delightful space is further enhanced by a door that opens onto a private balcony, offering breathtaking views across Coulsdon – a perfect spot to unwind after a long day.

The flat features two spacious bedrooms, one of which benefits from an en-suite shower room, providing added privacy and comfort. An additional bathroom serves the second bedroom and guests, ensuring convenience for all.

Residents will appreciate the communal lift and entryphone system, adding an extra layer of security and ease of access. The property is being offered to the market with no onward chain, making it an attractive option for those looking to move swiftly.

Situated just off the high street, you will find a variety of local eateries and two mainline stations within easy reach, making this flat an excellent choice for commuters. An internal viewing is essential to fully appreciate the quality and charm of this modern flat. Do not miss the opportunity to make this wonderful property your new home. Call now to arrange a viewing.



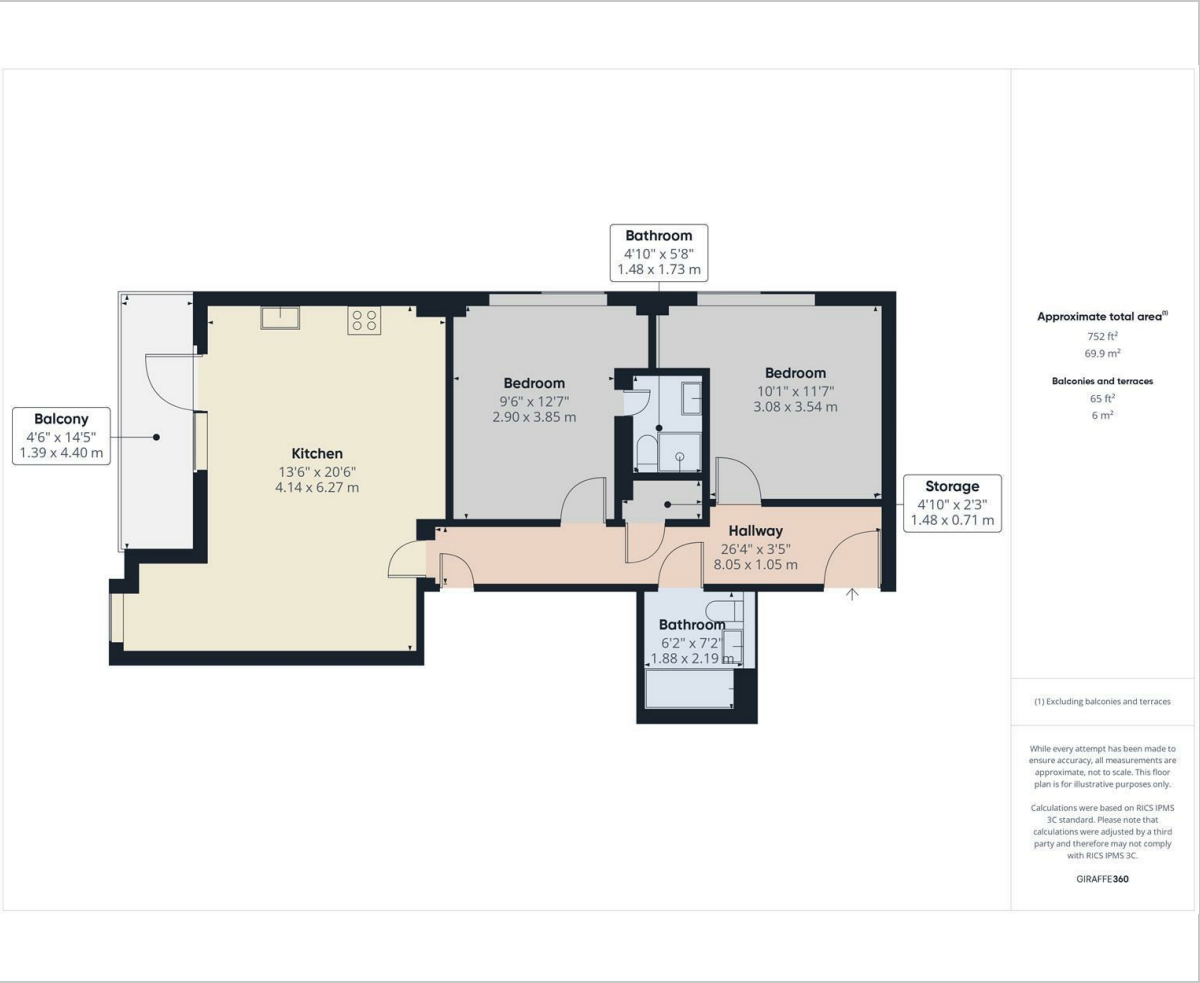


- communal entrance hall
- lift to top floor
- front door
- entrance hall
- lounge-kitchen-dining area
- bedroom 1
- en-suite shower room
- bedroom 2
- bathroom
- balcony





Floor Plan



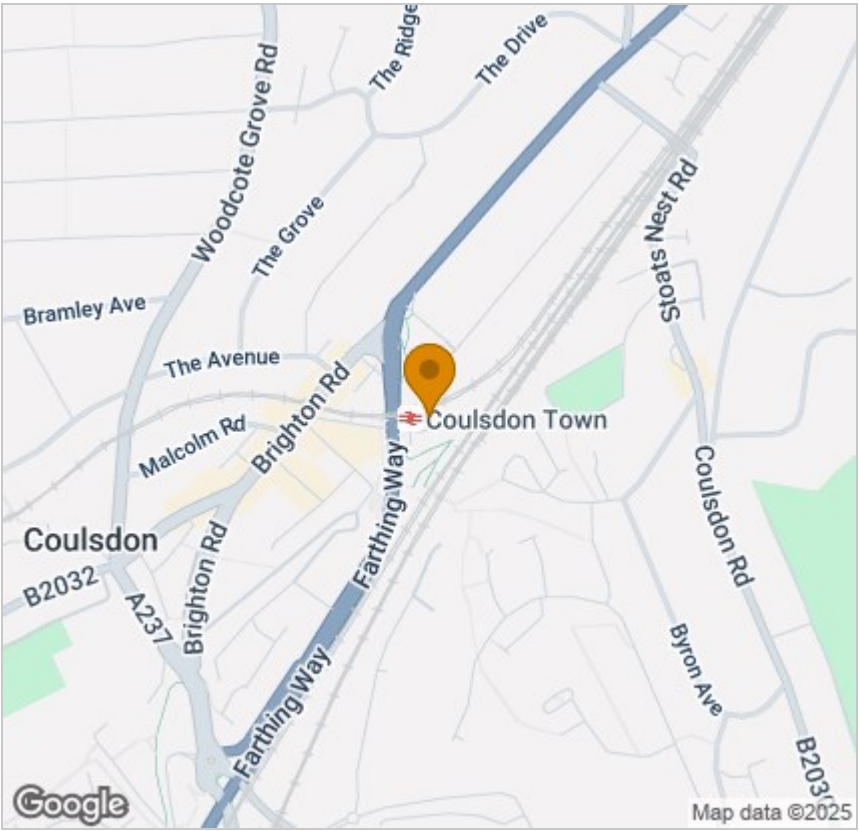
Viewing

Please contact our Coulsdon Sales Office on 0208 763 8878 if you wish to arrange a viewing appointment for this property or require further information.



147 Brighton Road,  
Coulsdon,  
Surrey  
CR5 2NJ  
Tel: 020 8763 8878  
Email: [sales@danieladamsestateagents.co.uk](mailto:sales@danieladamsestateagents.co.uk)  
[www.danieladamsestateagents.co.uk](http://www.danieladamsestateagents.co.uk)

Area Map



Energy Efficiency Graph

